

Coastal Courses  
Mark Positions - North

REGATTA HQ (CENTARA GRAND BEACH RESORT)	N 9° 31.11	E100° 03.58
MARK 1 - HAD RIN	N 9° 39.28	E100° 04.83
MARK 2 - PHANGAN	N 9° 40.89	E100° 00.08
MARK 3 - MAE NAM	N 9° 37.50	E100° 00.55
MARK 4 - HIN KONG NOI	N 9° 34.94	E 99° 55.12
KO TAE NOK	N 9° 42.25	E 99° 56.45
KO KONG OK	N 9° 36.25	E100° 05.65

Mark positions shown in the course diagrams are for illustration only.  
If there is any discrepancy between a course diagram and the written description, then the written description shall prevail.

Coastal Courses

**COURSE 1**  
DISTANCE APPROX 22 NM

START  
PASS **KO KONG OK** TO PORT  
ROUND **MARK 1 - HAD RIN** TO PORT  
ROUND **MARK 2 - PHANGAN** TO PORT  
AND PASS THROUGH **GATE**  
(LEAVING MARK 2 - PHANGAN TO PORT)  
ROUND **KO KONG OK** TO STARBOARD  
FINISH

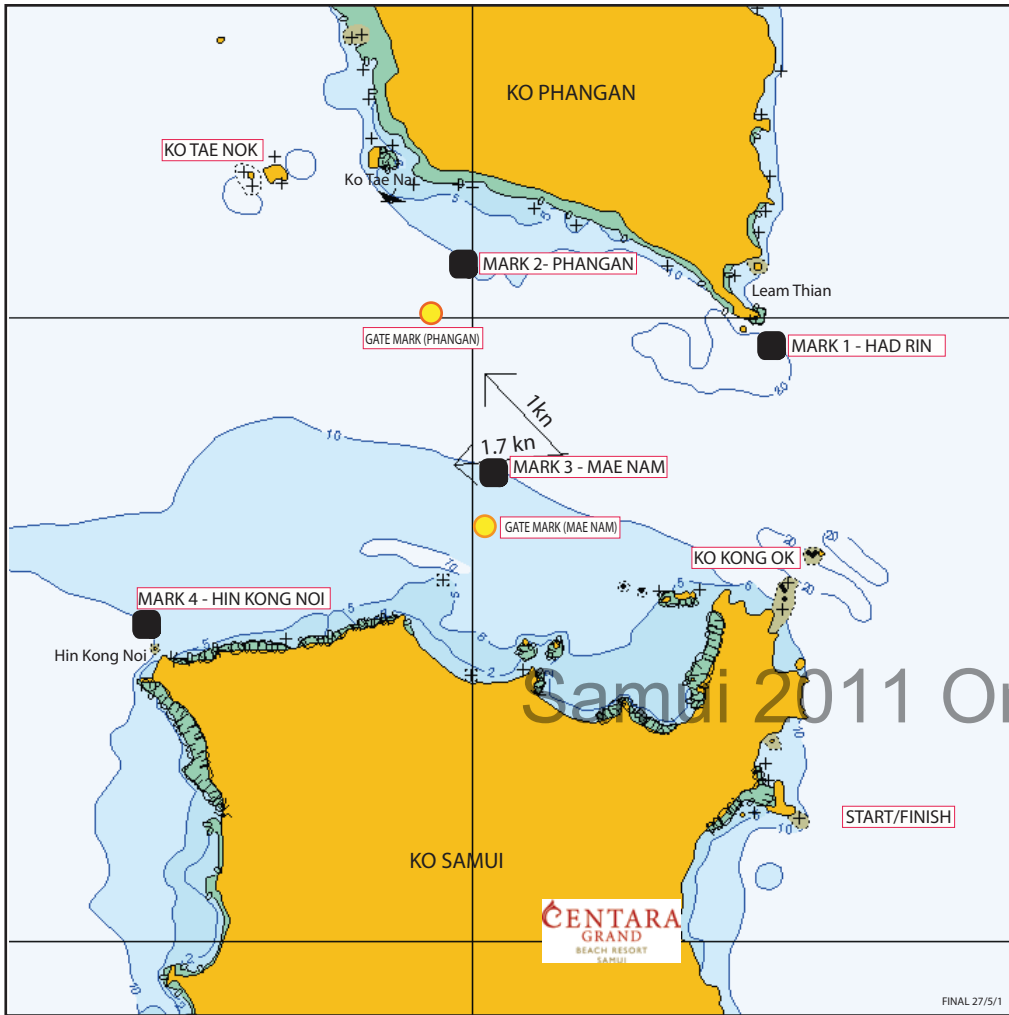
**COURSE 2**  
DISTANCE APPROX 32 NM

START  
PASS **KO KONG OK** TO PORT  
ROUND **MARK 1 - HAD RIN** TO PORT  
PASS **MARK 2 - PHANGAN** TO PORT  
ROUND **KO TAE NOK** TO PORT  
THROUGH **GATE MARK 2 - PHANGAN**  
ROUND **KO KONG OK** TO STARBOARD  
FINISH

**COURSE 3**  
DISTANCE APPROX 28 NM

START  
PASS **KO KONG OK** TO PORT  
ROUND **MARK 2 - PHANGAN** TO PORT,  
ROUND **MARK 3 - MENAM** TO PORT  
AND PASS THROUGH **GATE**  
(LEAVING MARK 3 - MAE NAM TO PORT)  
ROUND **KO KONG OK** TO STARBOARD  
FINISH

Mark positions shown in the course diagrams are for illustration only.  
If there is any discrepancy between a course diagram and the written description, then the written description shall prevail.



Coastal Courses

**COURSE 4**  
DISTANCE APPROX 36 NM

START  
PASS **KO KONG OK** TO PORT  
ROUND **MARK 2 - PHANGAN** TO PORT  
ROUND **MARK 4 - HIN KONG NOI** TO PORT  
THROUGH **GATE MARK 3 - MAE NAM**  
ROUND **KO KONG OK** TO STARBOARD  
FINISH

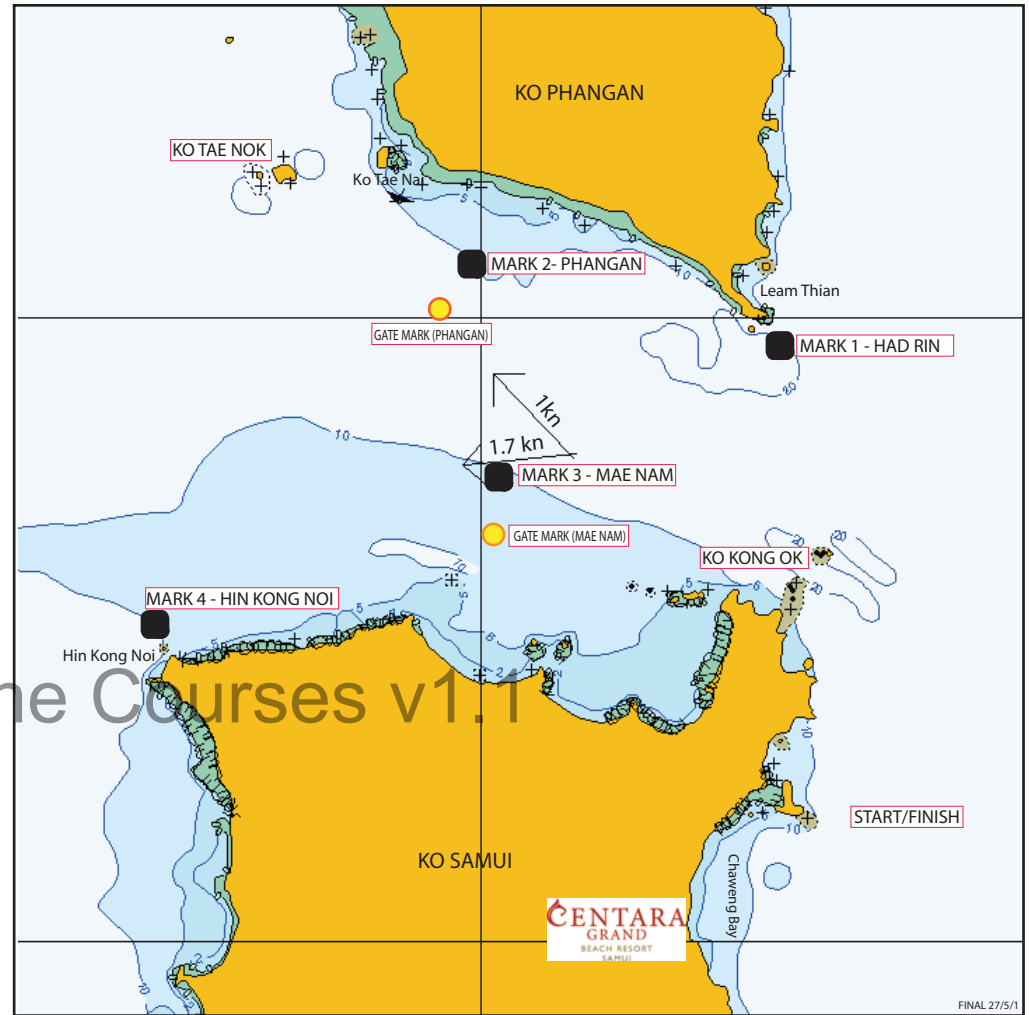
**COURSE 5**  
DISTANCE APPROX 26 NM

START  
PASS **KO KONG OK** TO PORT  
ROUND **MARK 1 - HAD RIN** TO PORT  
ROUND **MARK 3 - MAE NAM** TO PORT  
AND **PASS THROUGH GATE**  
(LEAVING **MARK 3 - MAE NAM** TO PORT)  
ROUND **KO KONG OK** TO STARBOARD  
FINISH

**COURSE 6**  
DISTANCE APPROX 35 NM

START  
PASS **KO KONG OK** TO PORT  
ROUND **MARK 1 - HAD RIN** TO PORT  
ROUND **MARK 4 - HIN KONG NOI** TO PORT  
THROUGH **GATE MARK 3 - MAE NAM**  
ROUND **KO KONG OK** TO STARBOARD  
FINISH

Mark positions shown in the course diagrams are for illustration only.  
If there is any discrepancy between a course diagram and the written description, then the written description shall prevail.



Coastal Courses

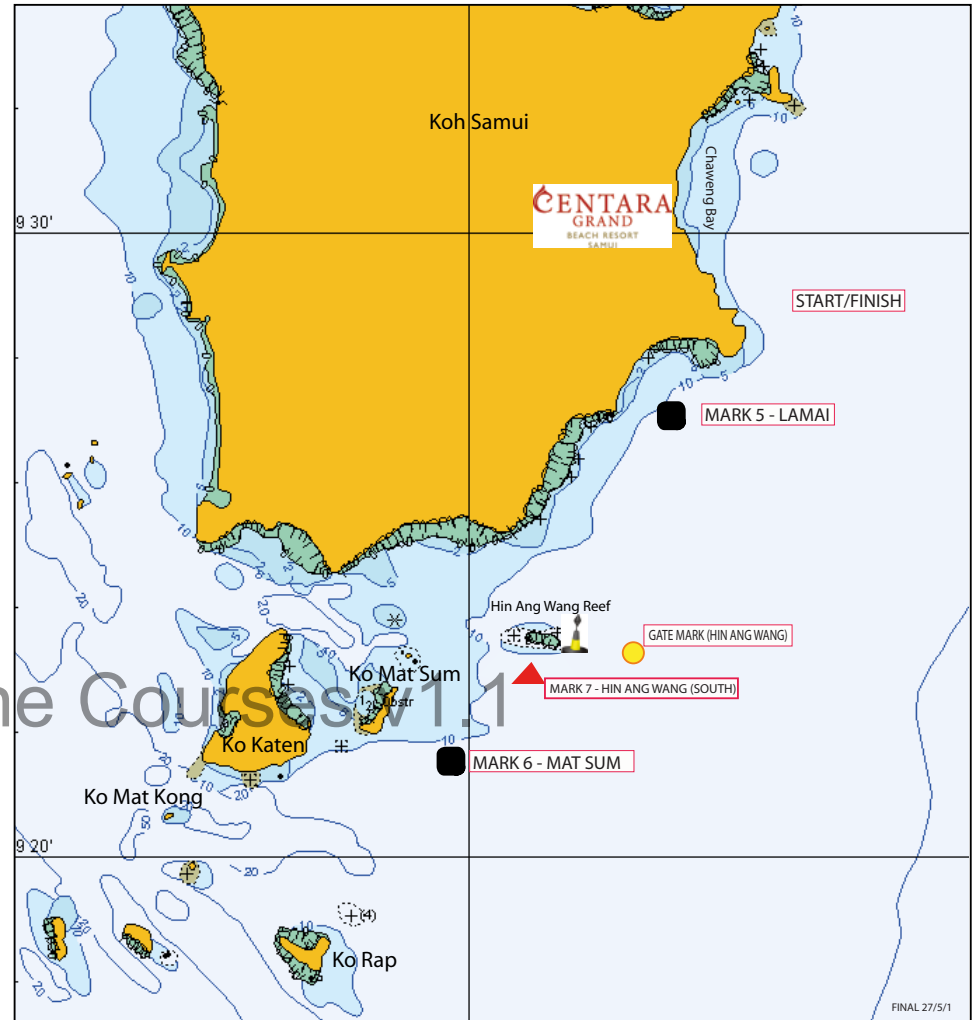
**COURSE 7**  
DISTANCE APPROX 16 NM

START  
PASS **KO KONG OK** TO PORT  
ROUND **MARK 3 - MAE NAM** TO PORT  
AND **PASS THROUGH GATE**  
(LEAVING **MARK 3 - MAE NAM** TO PORT)  
ROUND **KO KONG OK** TO STARBOARD  
FINISH

**COURSE 8**  
DISTANCE APPROX 17 NM

START  
PASS **KO KONG OK** TO PORT  
ROUND **MARK 1 - HAD RIN** TO PORT  
PASS **KO KONG OK** TO STARBOARD  
FINISH

Mark positions shown in the course diagrams are for illustration only.  
If there is any discrepancy between a course diagram and the written description, then the written description shall prevail.



Coastal Courses

Mark Positions - South

MARK 5 - LAMAI	N9° 26.68	E 100° 03.47
HIN ANG WANG REEF	REEF EXTENDS at N9° 23.57 between E 100° 00.50 and E 100° 01.80 YACHTS SHALL NOT PASS BETWEEN HIN ANG WANG REEF AND THE EAST CARDINAL MARK	
HIN ANG WANG (Cardinal Mark)	N9° 23.44	E 100° 02.18
MARK 6 - MAT SUM	N9° 21.50	E 99° 59.40
MARK 7 - HIN ANG WANG (SOUTH)	N9° 23.00	E 100° 01.20

Mark positions shown in the course diagrams are for illustration only.  
If there is any discrepancy between a course diagram and the written description, then the written description shall prevail.

Coastal Courses

**COURSE 9**

DISTANCE APPROX 22 NM

START  
ROUND **MARK 5 - LAMAI** TO PORT  
PASS **HIN ANG WANG REEF** TO PORT  
ROUND **MARK 6 - MAT SUM** TO PORT  
THROUGH **GATE HIN ANG WANG**  
(Gate is between yellow/black  
Cardinal Mark and Buoy)  
FINISH

**COURSE 10**

DISTANCE APPROX 30 NM

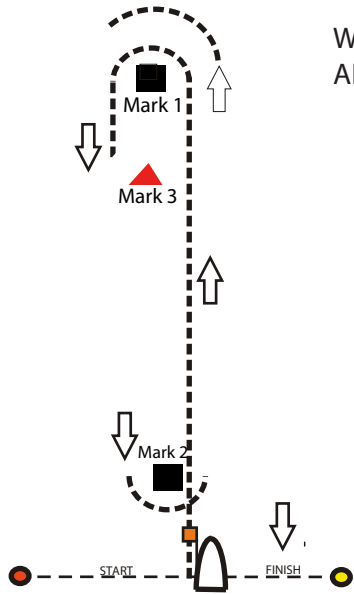
START  
ROUND **MARK 5 - LAMAI** TO PORT  
PASS **HIN ANG WANG REEF** TO PORT  
ROUND **MARK 6 - MAT SUM** TO PORT  
ROUND **KO RAP** TO PORT  
THROUGH **GATE HIN ANG WANG**  
(Gate is between yellow/black  
Cardinal Mark and Buoy)  
FINISH

**COURSE 11**

DISTANCE APPROX 18 NM

START  
ROUND **MARK 5 - LAMAI** TO PORT  
PASS **HIN ANG WANG REEF** TO PORT  
ROUND **MARK 7 - HIN ANG WANG (SOUTH)** TO PORT  
PASS THROUGH **GATE HIN ANG WANG**  
(Gate is between yellow/black  
Cardinal Mark and Buoy)  
FINISH

Mark positions shown in the course diagrams are for illustration only.  
If there is any discrepancy between a course diagram and the written description, then the written description shall prevail.

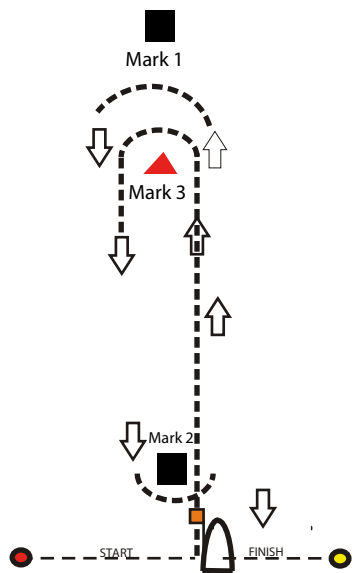


Windward/Leeward Courses  
ALL MARK ROUNDINGS TO PORT

**COURSE 15**  
START - 1 - Finish

**COURSE 16**  
START - 1 - 2 - 1 - FINISH

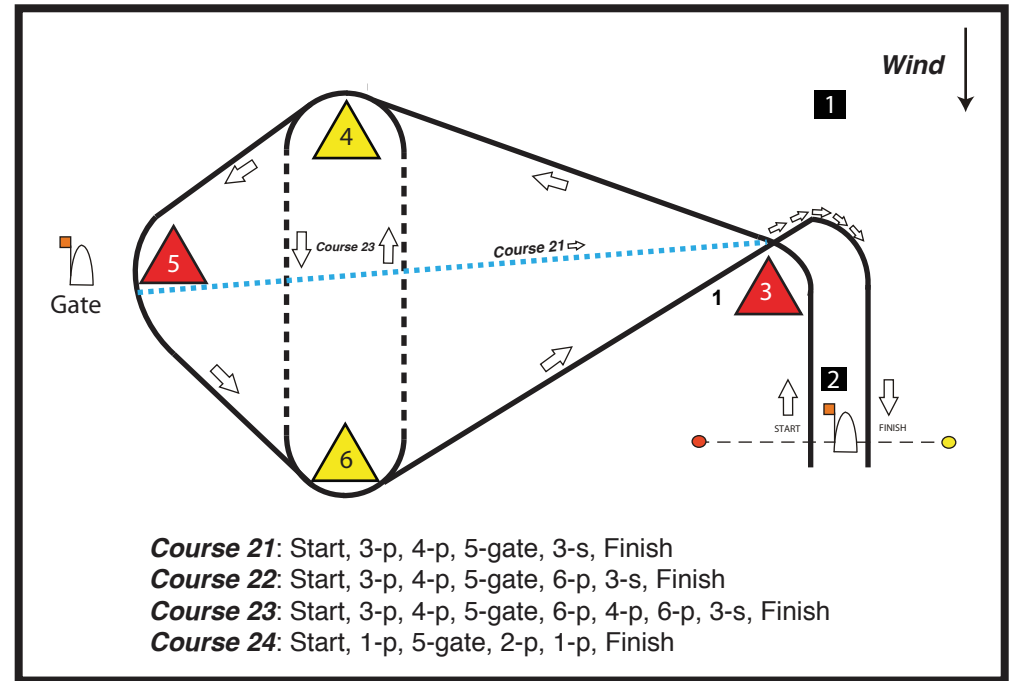
**COURSE 17**  
START - 1 - 2 - 1 - 2 - 1 - FINISH



**COURSE 18**  
START - 3 - Finish

**COURSE 19**  
START - 3 - 2 - 3 - FINISH

**COURSE 20**  
START - 3 - 2 - 3 - 2 - 3 - FINISH



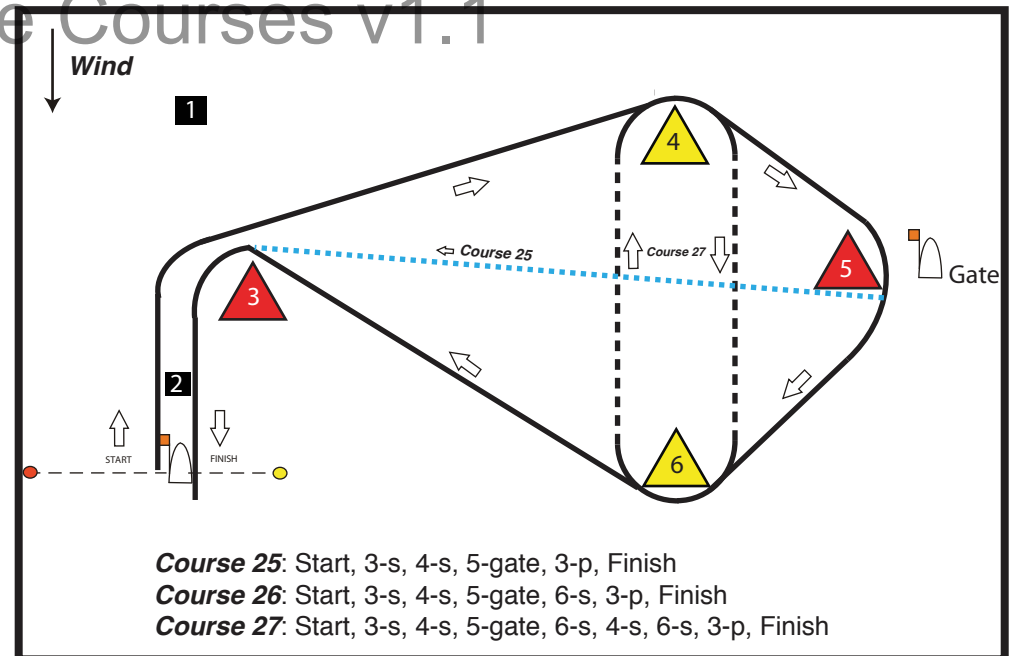
**Course 21:** Start, 3-p, 4-p, 5-gate, 3-s, Finish

**Course 22:** Start, 3-p, 4-p, 5-gate, 6-p, 3-s, Finish

**Course 23:** Start, 3-p, 4-p, 5-gate, 6-p, 4-p, 6-p, 3-s, Finish

**Course 24:** Start, 1-p, 5-gate, 2-p, 1-p, Finish

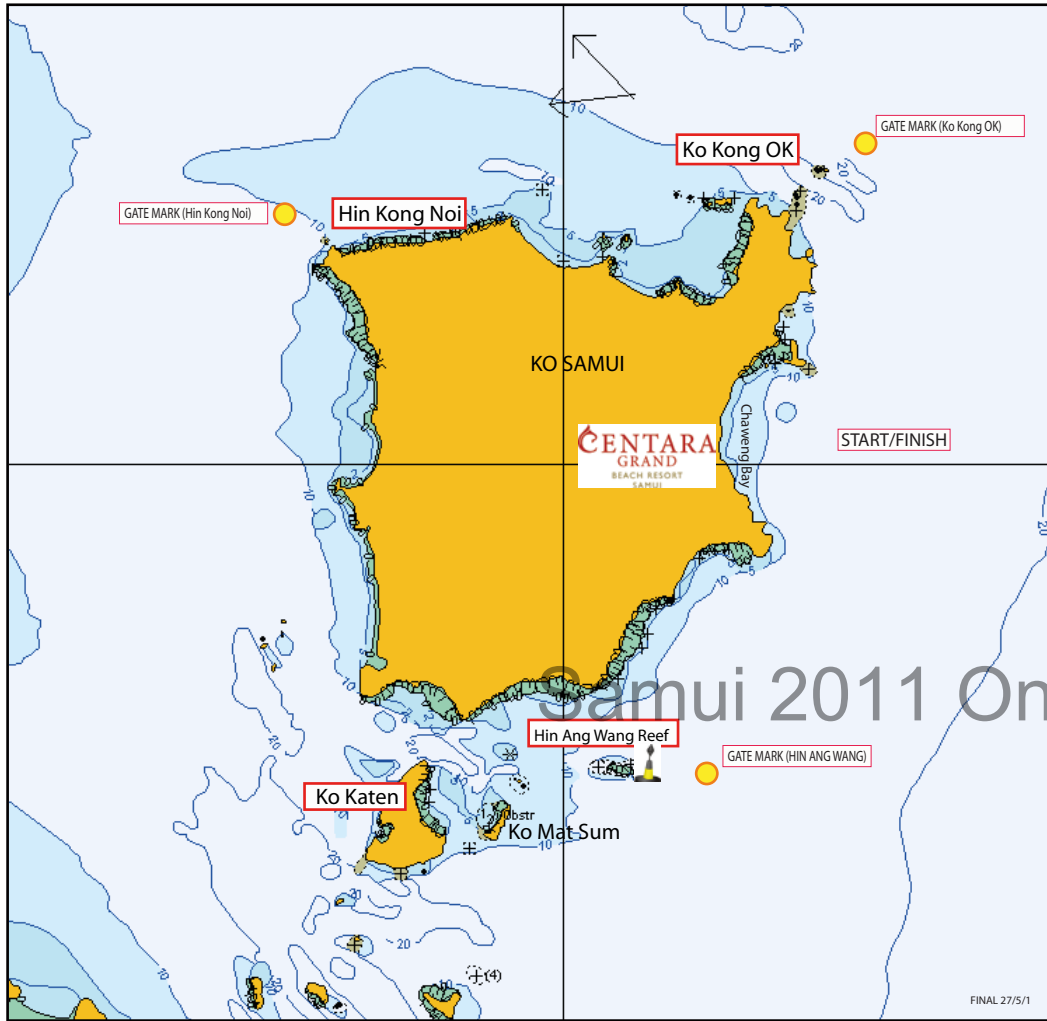
## Samui 2011 On-line Courses v1.1



**Course 25:** Start, 3-s, 4-s, 5-gate, 3-p, Finish

**Course 26:** Start, 3-s, 4-s, 5-gate, 6-s, 3-p, Finish

**Course 27:** Start, 3-s, 4-s, 5-gate, 6-s, 4-s, 6-s, 3-p, Finish



Offshore Courses - "Around the Island"

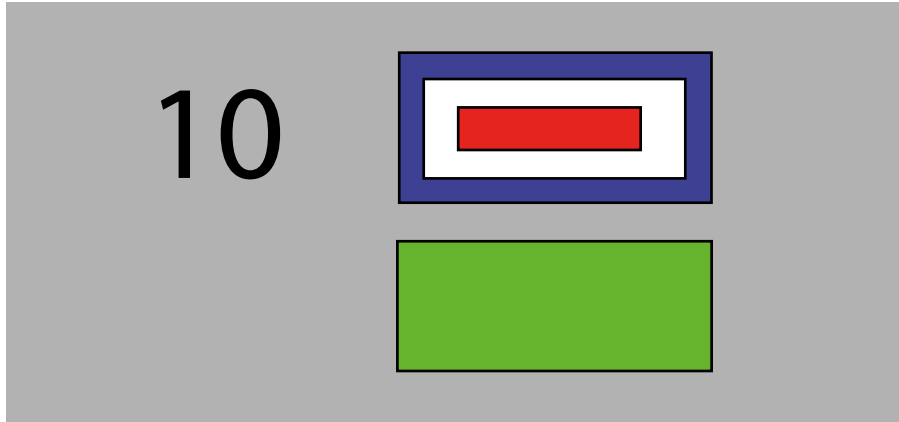
<b>COURSE 12</b> DISTANCE APPROX 40 NM	<b>COURSE 12B</b> DISTANCE APPROX 40 NM	<b>COURSE 14</b> DISTANCE APPROX 48 NM	<b>COURSE 14 B</b> DISTANCE APPROX 48 NM
START PASS <b>HIN ANG WANG REEF</b> TO PORT PASS <b>KO KATEN</b> TO PORT THROUGH GATE <b>HIN KONG NOI</b> (Gate is between <b>HIN KONG NOI</b> and Buoy) THROUGH GATE <b>KO KONG OK</b> (Gate is between <b>KO KONG OK</b> and Buoy) FINISH	START PASS <b>KO KONG OK</b> TO PORT THROUGH GATE <b>HIN KONG NOI</b> (Gate is between <b>HIN KONG NOI</b> and Buoy) PASS <b>KO KATEN</b> TO STARBOARD THROUGH GATE <b>HIN ANG WANG</b> (Gate is between yellow/black Cardinal Mark and Buoy) FINISH	START THROUGH GATE <b>HIN ANG WANG</b> (Gate is between yellow/black Cardinal Mark and Buoy) PASS <b>KO KATEN</b> TO STARBOARD THROUGH GATE <b>HIN KONG NOI</b> (Gate is between <b>HIN KONG NOI</b> and Buoy) THROUGH GATE <b>KO KONG OK</b> (Gate is between <b>KO KONG OK</b> and Buoy) FINISH	START PASS <b>KO KONG OK</b> TO PORT THROUGH GATE <b>HIN KONG NOI</b> (Gate is between <b>HIN KONG NOI</b> and Buoy) PASS <b>KO KATEN</b> TO PORT THROUGH GATE <b>HIN ANG WANG</b> (Gate is between yellow/black Cardinal Mark and Buoy) FINISH

Mark positions shown in the course diagrams are for illustration only.  
 If there is any discrepancy between a course diagram and the written description, then the written description shall prevail.

Samui 2011 On-line Courses v1.1

### Adding a windward mark

If Flag W is displayed with the course number board,  
A new first mark will be added to the course.  
This will be a mark to windward of the starting line.

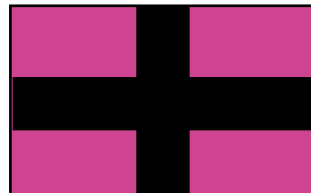


The Rounding direction is indicated by the Coloured Board displayed below the W.  
If a RED flag is displayed below flag W, then the mark is rounded to PORT  
If a GREEN flag is displayed below flag W, then the mark is rounded to STARBOARD

The second mark of the course will be the first mark in the course description.  
If a W flag is not flown, the first mark of the course will be the one listed in the course description.  
This section does not apply to windward/leeward courses.  
Those courses will be sailed as described in the Course Descriptions.

### Return to Finish

A committee boat at a mark displaying  
a Black Cross on a Pink Background means  
complete the rounding or passing of the mark  
and the race direct to the finish line.



เกาะสมุย (สุราษฎร์ธานี)  
Ko Samui (Surat Thani)

แลต (Lat) 09° 28' 47" น.(N)  
พ.ศ.๒๕๕๔

ลอง (Long) 99° 55' 40" อ.(E)  
YEAR 2011

MAY				JUNE							
เวลา TIME	สูง (ม.) HT (M.)	เวลา TIME	สูง (ม.) HT (M.)	เวลา TIME	สูง (ม.) HT (M.)	เวลา TIME	สูง (ม.) HT (M.)				
1 SU	0612 0958 1454 2237	1.50 1.60 1.41 2.16	16 MO	0614 1006 1338 2215	1.32 1.42 1.31 2.32	1 WE	0746 2300	1.12 2.32	16 TH	0845 2334	0.94 2.41
2 MO	0648 1054 1459 2300	1.38 1.52 1.40 2.26	17 TU	0712 1110 1354 2257	1.18 1.31 1.25 2.45	2 TH	0819 2336	1.08 2.38	17 FR	0924	0.93
3 TU	0724 1135 1508 2324	1.30 1.46 1.37 2.34	18 WE	0805 2339	1.09 2.52	3 FR	0901	1.06	18 SA	0019 0959	2.41 0.94
4 WE	0800 1209 1526 2352	1.25 1.41 1.34 2.40	19 TH	0900	1.06	4 SA	0015 0948	2.42 1.04	19 SU	0100 1027	2.38 0.97
5 TH	0834 1242 1552	1.23 1.37 1.30	20 FR	0023 0955	2.54 1.06	5 SU	0057 1031	2.44 1.03	20 MO	0139 1035	2.31 1.01
6 FR	0026 0910 1320 1622	2.45 1.21 1.34 1.28	21 SA	0106 1047	2.52 1.07	6 MO	0137 1101	2.43 1.04	21 TU	0213 1021	2.21 1.04
7 SA	0105 0949	2.47 1.20	22 SU	0147 1127	2.47 1.10	7 TU	0215 1115	2.38 1.08	22 WE	0241 1031	2.08 1.06
8 SU	0145 1041	2.48 1.20	23 MO	0226 1139	2.38 1.14	8 WE	0248 1119	2.27 1.13	23 TH	0259 1044	1.92 1.09
9 MO	0224 1206	2.46 1.20	24 TU	0300 1130	2.26 1.16	9 TH	0319 1115 1800 2034	2.12 1.17 1.51 1.48	24 FR	0244 1044 1844	1.75 1.12 1.71
10 TU	0302 1306	2.40 1.22	25 WE	0329 1148	2.12 1.19	10 FR	0345 1117 1835 2306	1.91 1.19 1.69 1.57	25 SA	1034 1927	1.12 1.82
11 WE	0341 1325	2.31 1.26	26 TH	0341 1209	1.95 1.22	11 SA	0400 1127 1923	1.69 1.18 1.88	26 SU	1016 2011	1.11 1.92
12 TH	0422 1326	2.16 1.31	27 FR	0311 1223 2105	1.79 1.25 1.84	12 SU	1129 2015	1.16 2.06	27 MO	0958 2053	1.08 2.01
13 FR	0512 1321 2037	1.96 1.35 1.73	28 SA	1228 2111	1.27 1.97	13 MO	1128 2108	1.12 2.21	28 TU	0837 2134	1.03 2.10
14 SA	0056 0635 1324 2100	1.66 1.75 1.37 1.94	29 SU	1231 2134	1.27 2.09	14 TU	1147 2159	1.07 2.32	29 WE	0847 2213	0.98 2.18
15 SU	0440 0832 1331 2136	1.50 1.56 1.36 2.15	30 MO	1228 2201	1.26 2.18	15 WE	0814 2247	0.98 2.38	30 TH	0901 2252	0.94 2.25
			31 TU	0729 2230	1.18 2.26						

สูงของน้ำทำนายเป็นเมตรเหนือระดับน้ำลงต่ำที่สุด

HEIGHTS OF WATER PREDICTED IN METERS ABOVE THE LOWEST LOW WATER