

One of only two specialist
puppet venues in the country

NORWICH

PUPPET THEATRE



Only
£26
a year

ADOPT-A-PUPPET

Your chance to support Norwich Puppet Theatre
and get involved with puppet life!

Find out more on www.puppettheatre.co.uk
or call Norwich Puppet Theatre on 01603 615564
for details and an application form

Norwich Puppet Theatre St James Whitefriars Norwich NR3 1TN Reg charity no. 271041
email info@puppettheatre.co.uk www.puppettheatre.co.uk

About Adopt-a-Puppet

Norwich Puppet Theatre has been in the church at St James' at Whitefriars for nearly 30 years. Over that time it has become home to a large family of puppets. Some of them have been there a while and some have come more recently but the trouble is, they need more people to help look after them. They need extra work to keep them happy and healthy, they need ideas to keep them busy and stimulated, they need love to make them lively and interesting. And they need friends to visit them so that they don't get lonely. They need money to mend and clothe them and to keep them warm. They need funds to help to keep their home in good repair. They need you!

You and your family could adopt a puppet and give it some of the extra support, love and attention it needs. It will still live at Norwich Puppet Theatre with its brothers and sisters (some of them have work to do) but you can visit your puppet whenever the puppet theatre is open. The more you visit, the happier your puppet will be.

Puppet adoption is also an excellent gift for your family or friends of any age and will bring them a whole year of pleasure as well as supporting a good cause. The puppets you can currently adopt are shown here but you can find out more about them by visiting www.puppettheatre.co.uk and following the adopt-a-puppet link.

What you will get for your adoption fee

When your adoption process is complete you will receive a **'Puppet Passport'** (once it has been sent off to Peterborough!) which includes a **colour photograph** and personal details of your puppet. The 'Puppet Passport' will also serve as a record which you can get stamped every time you visit your puppet. Visit your puppet ten times and you will be eligible for a free ticket to a puppet show of your choice¹. You will also receive **two free tickets** to a puppet show of your choice¹ ('subject to availability), plus **extra gifts and benefits** and a wonderful, warm glow of satisfaction!

As an optional extra, you can also join the **Adopt-a-Puppet Club*** which is an online social network group for people who have adopted puppets at Norwich Puppet Theatre – a bit like a puppet Facebook. You will get puppet theatre information and updates and you can blog and upload photos and videos. You will need parental permission and supervision for this if you are under 18, but that is just to keep you safe and sound.

You, or the person you adopt for, will also be sent guidance notes about the scheme.

To adopt a puppet and help to look after the puppet family costs only £26 a year, that's only 50p a week to keep a puppet warm, healthy and happy and to help ensure the future of Norwich Puppet Theatre for generations to come.

Each puppet may be adopted by many people so you can share the responsibility of puppet parenthood...

So apply for your adoption papers today!



The 'Mystery' Cat



Elephant Child



Brer Rabbit



Ladybird from James & the Giant Peach



Kiku from Paper Tiger



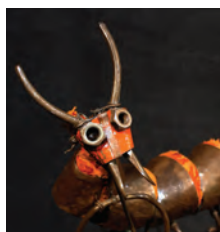
Travelling Cat



Hansel & Gretel



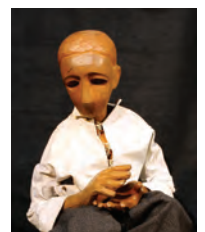
Old Woman



Centipede



Penguin



Joshua



Spirit of Unhappiness

* This is a dedicated social network site with a limited log-in, open only to those who have become adoptive parents through this scheme. New members are monitored and reasonable precautions are taken.