

# **Inflammatory bowel disease (IBD) and Homoeopathy**



**Dr. Rajneesh Kumar Sharma**  
**MD (Homoeopathy)**  
**Dr. Swati Vishnoi BHMS**  
**Dr. Preetika Lakhera BHMS**  
**Dr. Mohammad Tayyab**  
**Daud BHMS**  
**Dr. Mohammad Tayyab**  
**Amir BHMS**

# Inflammatory bowel disease (IBD) and Homoeopathy

---

© **Dr. Rajneesh Kumar Sharma** MD (Homoeopathy)

**Dr. Swati Vishnoi** BHMS

**Dr. Preetika Lakhera** BHMS

**Dr. Mohammad Tayyab Daud** BHMS

**Dr. Mohammad Tayyab Amir** BHMS

Homoeo Cure Research Institute

NH 74- Moradabad Road

Kashipur (UTTARANCHAL) - INDIA

Ph- 09897618594

E. mail- [drrajneeshhom@hotmail.com](mailto:drrajneeshhom@hotmail.com)

[www.treatmenthomeopathy.com](http://www.treatmenthomeopathy.com), [www.homeopathyworldcommunity.com](http://www.homeopathyworldcommunity.com)

---

## Contents

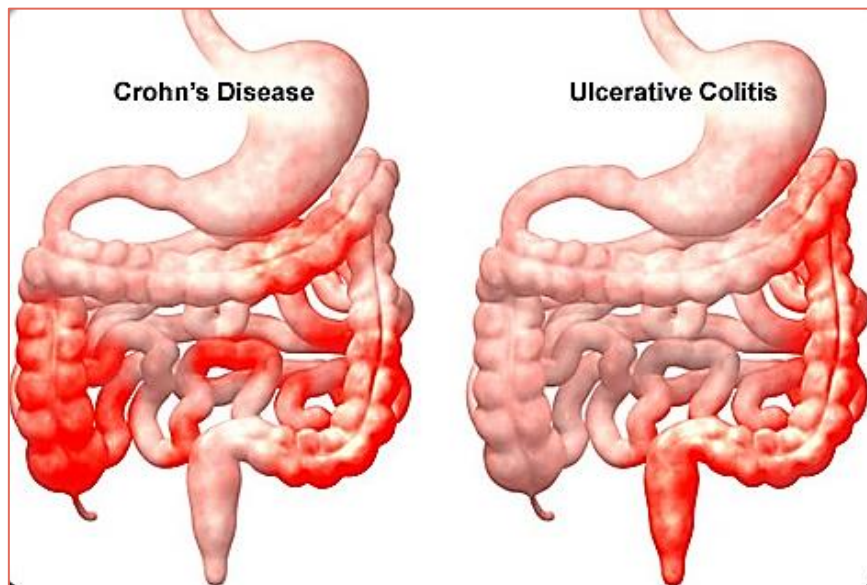
Definition.....	2
Pathophysiology .....	2
Etiology .....	3
Types.....	3
Unclassified.....	3
Classified.....	3
Crohn Disease.....	3
Colitis.....	3
Ulcerative colitis.....	4
Signs and symptoms.....	4
Gastrointestinal Symptoms.....	4
Extra-intestinal Manifestations .....	5
Parallel disorders.....	5
Concomitant disorders .....	5
Subsequent disorders .....	5
Crohn disease .....	5
Ulcerative colitis .....	6
Diagnosis .....	6
Routine Laboratory Tests.....	6
Tests for suspected IBD location or complication .....	7
Treatment .....	7
Common Homoeopathic remedies for IBD.....	7
Short repertory of IBD .....	8
Bibliography .....	15

## Definition

The relapsing and remitting (Psora) inflammatory conditions of the GI tract, including Crohn disease and ulcerative colitis (UC), are collectively called as Inflammatory bowel disease (IBD), characterized by chronic inflammation (Psora/ Sycosis/ Syphilis) at various sites in the colon and small intestine, resulting in diarrhea and abdominal pain.

## Pathophysiology

The exact etiology is unfamiliar. But it is seen that a cell-mediated immune response in the GI mucosa leads to inflammation by release of inflammatory mediators, including cytokines, interleukins, and tissue necrotic factor (TNF) (Psora). The normal intestinal flora triggers an abnormal immune reaction in individuals with a multifactorial genetic tendency (Syphilis). These factors possibly involve abnormal epithelial barriers and mucosal immune defense mechanisms (Psora). Crohn disease and ulcerative colitis, are both caused by a weakening in gut barrier (Psora/ Syphilis) and only differ in that UC is mainly due to increased infiltration of gut bacteria and the resultant recruitment of neutrophils and formation of crypt abscess (Psora/ Syphilis), while CD is mainly due to increased infiltration of antigens and particles from gut lumen and the resultant recruitment of macrophages and formation of granulomas (Psora/ Sycosis).



No specific environmental, dietary, or infectious causes are still known which trigger this reaction. However, the following factors modify IBD-

- Appendectomy appears to lower the risk of ulcerative colitis
- Cigarette smoking helps in development or exacerbation of Crohn disease but decreases risk of ulcerative colitis
- It is seen that people with higher socioeconomic status are likely to have Crohn disease
- NSAIDs may exacerbate IBD
- Oral contraceptives may increase the risk of Crohn disease
- Perinatal illness and the use of antibiotics in childhood may cause increased risk of IBD

## Etiology

Cause of IBD is still unknown. Saccharin may be a key causative factor for IBD, through its inhibition on gut bacteria and the resultant impaired inactivation of digestive proteases and over digestion of the mucus layer and gut barrier. (Causa occasionalis)

## Types

### Unclassified

Some cases are not primarily distinct and are termed unclassified. If a surgical pathologic specimen cannot be classified, it is called indeterminate colitis.

### Classified

#### Crohn Disease

- Small bowel involvement in most of cases
- Recto-sigmoid often spared
- Colonic involvement usually right-sided
- Gross rectal bleeding rare, but often seen in Crohn colitis (Psora/ Sycosis/ Syphilis)
- Fistula, mass, and abscess development common
- Perianal lesions significant in some of cases (Psora/ Syphilis)
- On x-ray, bowel wall affected asymmetrically and segmentally, with skip areas between diseased segments
- Endoscopic appearance patchy, with discrete ulcerations separated by segments of normal-appearing mucosa (Syphilis)
- Microscopic inflammation and fissuring extend transmurally and lesions often highly focal in distribution (Psora/ Syphilis)
- Epithelioid, sarcoid-like granulomas detected in bowel wall or lymph nodes in most of cases (Psora/ Sycosis)

#### Colitis

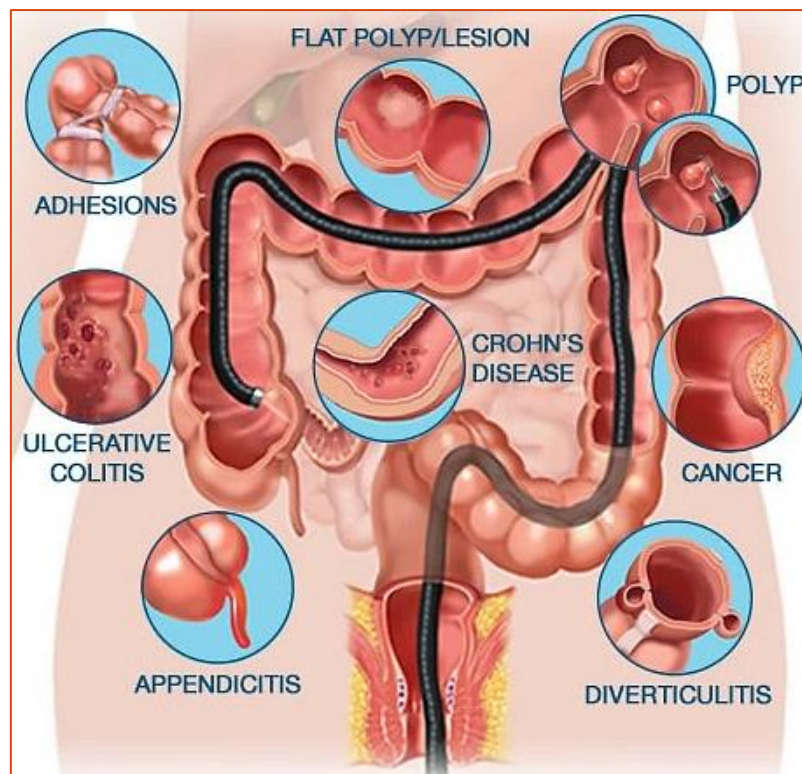
The inflammatory diseases of the colon are called colitis. Colitis may be of following types-

- Granulomatous colitis
  - Also called Crohn's colitis, occurs only in the colon with a typical histological pattern of granulomatous inflammation (Psora/ Sycosis)
- Infectious colitis
  - Food poisoning from E. coli, Salmonella (Psora/ Syphilis)
- Ischemic colitis
  - Usually due to narrowed or blocked blood vessels (Psora/ Sycosis)
- Radiation-induced colitis
  - Usually after exposure to radiation therapy (Causa occasionalis)
- Ulcerative colitis (Psora/ Syphilis)

Spastic or mucous colitis is a misnomer and applied to irritable bowel syndrome, a functional disorder (Psora). Ulcerative colitis is the most common hazard among these all and must be studied separately.

## Ulcerative colitis

- Confined to the colon
- Recto-sigmoid invariably involved
- Colonic involvement usually left-sided
- Gross rectal bleeding always present (Psora/ Syphilis)
- No fistulas
- No significant perianal lesions
- Bowel wall affected symmetrically and uninterruptedly from rectum proximally (Psora)
- Inflammation uniform and diffuse (Psora)
- Inflammation confined to mucosa except in severe cases (Psora)
- No typical epithelioid granulomas



## Signs and symptoms

Inflammatory bowel disease has following signs and symptoms in general-

### Gastrointestinal Symptoms

Chronic abdominal pain with or without chronic bloody or non-bloody diarrhea for more than four weeks associated with-

- Anemia (Psora)
- Evidence of inflammation – elevated CRP, elevated platelets (Psora/ Sycosis)
- Family history of IBD
- Nocturnal diarrhea (Syphilis)
- Nutritional deficiencies – iron, B12, folate, low albumin (Psora)
- Weight loss (Psora/ Syphilis)

## Extra-intestinal Manifestations

Crohn disease and ulcerative colitis both affect the person as a whole. Most extra-intestinal manifestations are more common in ulcerative colitis than in Crohn disease, as it is limited to the small bowel. Extra-intestinal manifestations of inflammatory bowel disease may be grouped into three-

### Parallel disorders

These include-

- Aphthous stomatitis (Psora/ Syphilis)
- Episcleritis (Psora/ Sycosis)
- Erythema nodosum (Psora/ Sycosis)
- Peripheral arthritis- large joints and migratory and transient (Psora/ Sycosis)
- Pyoderma gangrenosum (Psora/ Sycosis/ Syphilis)

### Concomitant disorders

These include-

- Ankylosing spondylitis- in association with HLA-B27 (Psora/ Sycosis/ Syphilis)
- Primary sclerosing cholangitis- before IBD or parallel (Psora/ Sycosis/ Syphilis)
- Sacroiliitis (Psora/ Syphilis)
- Uveitis (Psora/ Syphilis)
- Liver disease- fatty liver, autoimmune hepatitis, pericholangitis, cirrhosis (Psora/ Sycosis/ Syphilis)

### Subsequent disorders

These occur mainly in severe Crohn disease and include-

- Malabsorption- may result from extensive ileal resection (Psora/ Syphilis)
- Kidney stones- from excessive dietary oxalate absorption (Psora)
- Hydroureter and hydronephrosis- due to ureteral compression by the intestinal inflammatory process (Psora/ Sycosis)
- Gallstones- from impaired ileal reabsorption of bile salts (Psora)
- Amyloidosis- secondary to long-standing inflammatory and suppurative disease (Psora/ Sycosis/ Syphilis)

Thromboembolic disease can arise due to various factors in all the above groups.

## Crohn disease

There are four major manifestations of Crohn disease-

### Inflammation

- Abdominal pain localized over inflamed areas (Psora)
- Diarrhea, occasional fever, weight loss (Psora/ Syphilis)
- Obstructive symptoms secondary to inflammation (Psora/ Sycosis)
- Toxic megacolon (Psora/ Sycosis/ Syphilis)

### Obstruction

- Abdominal cramps, bloating, distension, nausea, vomiting, borborygmy (Psora)
- Luminal narrowing secondary to inflammation- reversible (Psora)
- Luminal narrowing secondary to fibrosis / scarring – irreversible (Psora/ Sycosis)

### Fistulization

- Entero-enteric fistula- asymptomatic (Psora/ Syphilis)
- Entero-vesical fistula- frequent urinary tract infections and dysuria, pneumaturia (Psora/ Syphilis)
- Entero-vaginal fistula- passing air or fecal matter per vagina (Psora/ Syphilis)
- Entero-cutaneous fistula- tends to form in the path of least resistance
- Perianal lesions
  - External perianal opening with drainage (Psora/ Syphilis)
  - Painful perianal swelling or abscess if external opening blocked (Psora/ Syphilis)

### Perforation

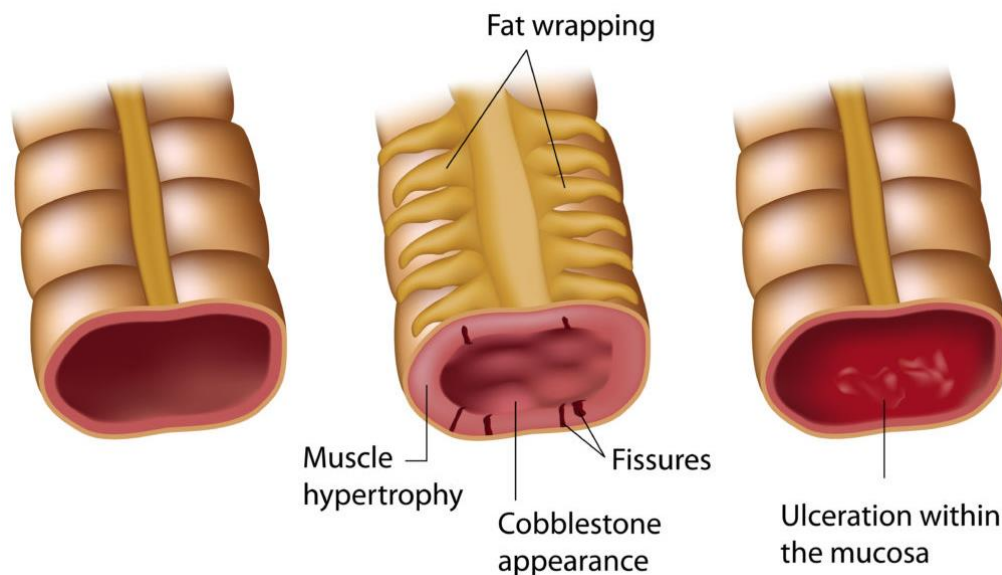
- Resembling appendicitis, diverticulitis (Psora/ Sycosis/ Syphilis)

### Ulcerative colitis

There are three common manifestations of ulcerative colitis-

- Abdominal cramps (Psora)
- Diarrhea with fresh bright red bleeding (Psora/ Syphilis)
- Urgency and tenesmus (Psora)

Some associated symptoms are mild fever, tachycardia, dehydration, abdominal tenderness and blood on rectal examination. (Psora/ Syphilis)



### Diagnosis

Along with complete case history, laboratory investigations are also needed to confirm the diagnosis and prognosis of the case. Treatment will depend on both of these.

### Routine Laboratory Tests

- CRP C-reactive protein- non-specific inflammation
- ESR Erythrocyte Sedimentation Rate- non-specific inflammation
- CBC Complete Blood Count- Anemia, infection, inflammation

- Electrolytes Sodium, Potassium, Chloride, CO<sub>2</sub>- Dehydration
- Liver Function Test- Liver Enzymes and medication side effects, PSC (primary sclerosing cholangitis)
- Vitamin B12- Anemia, nutritional status
- Vitamin D- Bone mineral status
- Calprotectin Stool protein- Active intestinal inflammation
- Lactoferrin Stool protein- Active intestinal inflammation
- pANCA perinuclear anti-neutrophil antibody- Distinguishes UC from CD
- ASCA anti-Saccharomyces cerevisiae antibody- Distinguishes CD from UC
- CBir1 anti-flagellin antibody- Indicative of Crohn's disease
- OmpC anti-OmpC antibody- Indicative of Crohn's disease

### Tests for suspected IBD location or complication

- Ileocolonic disease- Colonoscopy, SBFT/enteroclysis, CTE, MRE, capsule endoscopy (CE)
- Upper tract Crohn's disease- EGD-Upper GI Series (UGIS)
- Perianal Crohn's disease- MRI-EUS
- PSC (primary sclerosing cholangitis)- ERCP
- Pancreatic and bile ducts- MRCP
- Perforations, blockages, abscesses- Plain X-ray and CT scan

### Treatment

From overall study of IBD, it becomes clear that it is not simply a disorder of local factors, but whole genetics and constitutional disharmony is there. The person as a whole is affected by the factors causing IBS; and later on, by the effects of established disease in that individual, physically as well as mentally. Thus, whole person needs treatment rather than a local gastrointestinal system.

Well selected constitutional remedy almost always cures the condition permanently if applied as per laws of similia.

### Common Homoeopathic remedies for IBD

abrom-a. Abrot. Acal. Acet-ac. achy-a. Acon-c. ACON. Act-sp. adren. aesc. Aeth. aethi-a. agar-ph. AGAR. Agn. agra. ail. alet. alf. All-c. all-s. allox. aln. ALOE alst. alum-p. alum-sil. ALUM. Alumn. Am-c. AM-M. am-p. Ambr. ammc. anac-oc. Anac. anag. anan. androg-p. ang. Ango. anh. Anis. ANT-C. Ant-t. anth. aphis APIS Apoc-a. APOC. aral. Aran. arb. arg-cy. ARG-MET. Arg-n. Arg-o. arge. arist-cl. ARN. Ars-i. ars-s-f. ars-s-r. ARS. arthr-u. Arum-t. arund. ASAF. Asar. asc-c. asc-t. asim. astac. aster. atis. atro. aur-ar. aur-fu. aur-i. Aur-m-n. aur-m. aur-s. AUR. bac. BAPT. BAR-C. bar-i. Bar-m. bar-s. baros. bell-p. BELL. BENZ-AC. berb-a. Berb. bism. Bol-la. bold. BORX. BOV. Brom. BRY. bufo but-ac. cact. cadm-met. cadm-s. cain. caj. cal-ren. Calad. calc-act. calc-ar. calc-chln. Calc-f. Calc-hp. calc-i. CALC-P. calc-s. calc-sil. CALC. Camph. cann-i. cann-s. Cann-xyz. Canth. CAPS. Carb-ac. Carb-an. CARB-V. carbn-dox. carbn-o. CARBN-S. carc. card-b. Card-m. Carl. Casc. cassia-s. castm. castor-eq. catar. Caul. CAUST. cean. Cedr. cench. cere-b. CHAM. chap. CHEL. chen-v. Chin-b. CHIN. CHININ-AR. Chinin-s. chion. Chlf. chlol. chlor. Chloram. chol. Cic. cimic. Cimx. cina cinch. cinnb. cist. Cit-v. Clem. cob-n. Cob. coc-c. Coca COCC. Coch. Coff. COLCH. COLL. COLOC. colocin. com. Con. conv. convo-s. Cop. Cor-r. Corn. cortiso. cot. coxs. croc. Crot-c. Crot-h. CROT-T. cub. Cupr-act. Cupr-ar. CUPR. Cycl. cyn-d. cyt-l. daph.



der. Dig. DIOS. Diosm. dirac. dol. Dros. DULC. eberth. Echi. echit. elaps ELAT. epig. epil. equis-h. erech. erig. ery-a. eryt-j. eucal. euon-a. euon. euonin. Eup-a. eup-per. eup-pur. EUPH. Euphr. eupi. eys. fab. fago. fel FERR-AR. ferr-cy. Ferr-i. ferr-p. ferr-s. Ferr. ferul. fil. fl-ac. flor-p. form. frag. fuch. fuma-ac. gaert. gal-ac. gali. GAMB. gast. GELS. gent-c. geo. Gins. glon. glyc. Glycyr-g. gnaph. Gran. GRAPH. GRAT. Guaj. guat. haem. ham. hed. hedeo. HELL. Helon. Hep. hip-ac. hipp. Hippoz. hir. hist. hoit. hom-xyz. hura HYDR. hydrang. hydrc. Hydrin-m. HYOS. Hyper. Ichth. IGN. ind. iod. iodof. IP. ipom-p. IRIS Iris-t. jab. jac-c. Jal. JATR-C. Jug-c. jug-r. KALI-AR. KALI-BI. Kali-br. Kali-c. KALI-CHL. Kali-i. Kali-m. Kali-n. kali-p. Kali-pic. KALI-S. kali-sil. KALM. Kreos. kurch. Lac-ac. Lac-c. Lac-d. lacer. LACH. lact. lappa lat-m. LAUR. Lec. Led. Lept. liat. lil-t. Lim. lipp. LITH-C. lob. luf-op. LYC. lycps-v. lyss. m-ambo. M-arct. m-aust. Mag-c. MAG-M. MAG-P. Mag-s. Manc. mand. mang-act. mang-s. Mang. Med. mentho. Meny. meph. MERC-C. Merc-cy. Merc-d. merc-i-f. merc-i-r. merc-sul. MERC. merl. Mez. micr. mill. mim-p. morph. Mosch. MUR-AC. murx. myric. nabal. naja narc-ps. Nat-ar. nat-br. NAT-C. nat-f. nat-hchls. NAT-M. nat-n. Nat-p. NAT-S. nat-sal. nicc. NIT-AC. nit-m-ac. nit-s-d. Nuph. NUX-M. NUX-V. oci-sa. oci. ol-an. ol-j. OLND. onis. onos. OP. opun-s. oreo. osm. ox-ac. oxyd. oxyg. oxyt. oxyte-chl. p-benzq. paeon. pall. Par. paraf. PAREIR. penic. Petr. PH-AC. phel. phlor. PHOS. Phyt. pic-ac. pin-s. pipe. Plan. Plat. Plb-act. plb-chr. plb-xyz. PLB. PODO. polyg-h. pot-e. Prun. psil. PSOR. Ptel. PULS. PYROG. quas. rad-br. Ran-b. ran-s. Raph. rat. rauw. rham-cal. rham-cath. Rheum Rhod. Rhus-g. RHUS-T. rhus-v. ric. rob. rub-t. Rumx. Ruta sabad. sabal sabin. sacch. sal-ac. samb. Sang. sanic. saroth. SARS. scroph-xyz. sec. Sel. Semp. senec. Seneg. SENN. SEP. SIL. sin-n. sol-ni. sol-t-ae. solid. sphing. SPIG. spira. SPONG. Squil. Stann. Staph. stel. stict. Stigm. Stram. Streptoc. STRONT-C. STRY. SUL-AC. sul-i. sulfa. sulfonam. SULPH. sumb. syph. Tab. TARAX. Tarent. tell. TER. teucr. thal-met. thal-s. ther. thlas. THUJ. thymol. thyr. til. toxo-g. Trios. Trom. tub-r. Tub. uran-met. Uran-n. urt-u. uva VALER. vanad. vario. Verat-v. VERAT. verb. vesi. vesp. vib. vichy-g. vinc. viol-t. vip. visc. x-ray yohim. zinc-fcy. zinc-p. Zinc-s. zinc-val. Zinc. ZING.

### Short repertory of IBD

ABDOMEN - DISTENSION – painful ACON. Aeth. alum. ant-t. arg-met. ARS. Bar-c. bell. Bry. calad. canth. CAUST. cham. chin. cic. croc. Euph. hedeo. hell. Hyos. ign. ip. kali-bi. kali-c. kali-i. kali-p. LACH. mag-p. merc-c. MERC. mez. nat-c. nat-m. nit-ac. nux-v. petr. raph. rhod. RHUS-T. sabin. sep. sphing. spig. stann. stram. stront-c. sulph. valer. verat.

ABDOMEN - FATTY DEGENERATION of liver aur. calc-f. chel. kali-bi. kali-s. lac-d. Lyc. lyss. mang-act. mang. Merc. phlor. Phos. pic-ac. vanad.

ABDOMEN – GALLSTONES ARS. aur. bapt. bell. berb. bold. Bry. calc-f. calc. card-m. Cham. chel. chin. chion. chlf. chol. coloc. cupr. dig. dios. eberth. euon-a. euon. euonin. fab. fel ferr-s. fuma-ac. gels. guat. hed. Hydr. jug-c. lach. Lept. lith-c. lob. lyc. mag-p. mag-s. mand. mang. merc-d. MERC. myric. nat-s. nat-sal. nit-s-d. nux-v. Phos. podo. ptel. sang. sulph. tarax. thlas. verat. vichy-g.

ABDOMEN - INFLAMMATION – Cecum acon. APIS. Arn. Ars. bapt. BELL. BRY. Calad. canth. Card-m. Chin. Colch. coll. Coloc. Crot-h. Dios. Echi. ferr-p. gamb. gast. gins. hep. iris-t. kali-m. LACH. Lyc. Merc-c. MERC. Nat-s. Nux-v. OP. Phos. plb-xyz. Plb. pyrog. rham-cal. rham-cath. RHUS-T. Samb. Sep. Sil. Stram. sulph. THUJ. verat.

- ABDOMEN - INFLAMMATION - Colon - accompanied by – flatulence [arg-n.](#)
- ABDOMEN - INFLAMMATION - Colon - accompanied by – hemorrhage [aran.](#) [cyn-d.](#) [ham.](#) [merc-c.](#) [merc.](#) [streptoc.](#)
- ABDOMEN - INFLAMMATION - Colon - accompanied by - sexual desire; increased [gamb.](#) [Grat.](#) [lyc.](#) [nabal.](#)
- ABDOMEN - INFLAMMATION - Colon - accompanied by – weakness [cadm-s.](#)
- ABDOMEN - INFLAMMATION - Colon – acute [achy-a.](#) [podo.](#)
- ABDOMEN - INFLAMMATION - Colon – amoebic [ars.](#) [atis.](#) [kali-bi.](#) [kali-c.](#) [kurch.](#) [lach.](#) [merc-c.](#) [merc.](#) [nat-s.](#) [nux-v.](#) [sulph.](#) [thuj.](#)
- ABDOMEN - INFLAMMATION - Colon – cancerous [mag-c.](#) [mag-m.](#) [mag-s.](#) [phos.](#)
- ABDOMEN - INFLAMMATION - Colon - chilliness; with [cadm-s.](#)
- ABDOMEN - INFLAMMATION - Colon – chronic [gaert.](#) [lyc.](#) [oxyte-chl.](#) [podo.](#) [sulph.](#)
- ABDOMEN - INFLAMMATION - Colon - diarrhea - [amel.](#) [lach.](#)
- ABDOMEN - INFLAMMATION - Colon - flora; with pathological intestinal [all-s.](#)
- ABDOMEN - INFLAMMATION - Colon - grief; after [Ign.](#) [mag-c.](#) [mag-m.](#) [mag-s.](#) [nat-m.](#) [nat-s.](#) [Staph.](#)
- ABDOMEN - INFLAMMATION - Colon – membranous [colch.](#)
- ABDOMEN - INFLAMMATION - Colon – mucous [aethi-a.](#) [asar.](#) [aur-m-n.](#) [cop.](#) [cox.](#) [graph.](#) [hell.](#) [hydr.](#) [merc-c.](#) [merc.](#) [pot-e.](#) [x-ray](#)
- ABDOMEN - INFLAMMATION - Colon – painful [coloc.](#) [merc-c.](#) [merc.](#) [rhus-t.](#)
- ABDOMEN - INFLAMMATION - Colon - radiotherapy; after [podo.](#)
- ABDOMEN - INFLAMMATION - Colon - summer agg. [ip.](#) [kali-bi.](#) [puls.](#)
- ABDOMEN - INFLAMMATION - Colon – ulcerative [Chloram.](#) [coloc.](#) [Hell.](#) [lil-t.](#) [Mag-s.](#) [merc.](#) [Nat-s.](#) [nit-ac.](#) [nux-v.](#) [podo.](#) [Streptoc.](#) [sulph.](#) [ter.](#) [zinc.](#)
- ABDOMEN - INFLAMMATION – Colon [all-s.](#) [arg-n.](#) [ars.](#) [asaf.](#) [asar.](#) [bism.](#) [cadm-s.](#) [calc-ar.](#) [canth.](#) [caps.](#) [carc.](#) [cench.](#) [chin.](#) [colch.](#) [cop.](#) [crot-t.](#) [Ferr-i.](#) [Gamb.](#) [guat.](#) [hell.](#) [hoit.](#) [kali-bi.](#) [kali-n.](#) [kali-p.](#) [lach.](#) [lil-t.](#) [lyc.](#) [mag-c.](#) [MERC-C.](#) [merc.](#) [nat-c.](#) [nat-m.](#) [nat-s.](#) [nit-ac.](#) [nux-v.](#) [olnd.](#) [petr.](#) [ph-ac.](#) [phos.](#) [podo.](#) [ptel.](#) [raph.](#) [rhus-t.](#) [sulph.](#) [syph.](#) [ter.](#) [tub.](#) [verat.](#) [zinc-val.](#) [zinc.](#)
- ABDOMEN - INFLAMMATION - Liver – chronic [Arn.](#) [aur.](#) [bell.](#) [carc.](#) [Card-m.](#) [Corn.](#) [crot-h.](#) [Lach.](#) [lact.](#) [LYC.](#) [mag-m.](#) [nat-c.](#) [Nat-m.](#) [NAT-S.](#) [Nit-ac.](#) [Nux-v.](#) [Phos.](#) [phyt.](#) [podo.](#) [Psor.](#) [ptel.](#) [ran-s.](#) [sel.](#) [sil.](#) [Sulph.](#)
- ABDOMEN - INFLAMMATION – Liver [ACON.](#) [act-sp.](#) [aloe](#) [alum.](#) [am-c.](#) [ambr.](#) [anan.](#) [androg-p.](#) [ant-c.](#) [apis](#) [arg-n.](#) [Arn.](#) [ars-i.](#) [ARS.](#) [astac.](#) [aur-m.](#) [Aur.](#) [bapt.](#) [BELL.](#) [Brom.](#) [Bry.](#) [calc-f.](#) [Calc.](#) [Camph.](#) [cann-xyz.](#) [canth.](#) [Caps.](#) [carc.](#) [Card-m.](#) [Cham.](#) [CHEL.](#) [Chin.](#) [cic.](#) [cocc.](#) [Corn.](#) [crot-h.](#) [cupr.](#) [dig.](#) [Diosm.](#) [dol.](#) [eup-per.](#) [flor-p.](#) [graph.](#) [guat.](#) [Hep.](#) [Hippoz.](#) [ign.](#) [iod.](#) [kali-ar.](#) [kali-bi.](#) [Kali-c.](#) [kali-chl.](#) [kali-i.](#) [kali-n.](#) [kali-p.](#) [Lach.](#) [Laur.](#) [LYC.](#) [mag-c.](#) [Mag-](#)

m. mand. mang-s. mang. merc-d. Merc. nat-ar. nat-c. Nat-m. NAT-S. Nit-ac. nit-m-ac. nux-m. NUX-V. p-benzq. petr. ph-ac. Phos. phyt. Podo. Psor. Ptel. puls. ran-b. ran-s. sang. scroph-xyz. sec. sel. sep. Sil. stann. staph. stel. sulfa. Sulph. tab.

ABDOMEN – INFLAMMATION Acet-ac. ACON. aloe alun. ant-c. ANT-T. APIS arg-n. Arn. ars-i. ARS. asc-c. atro. Bapt. BELL. brom. BRY. bufo Cact. calc-sil. Calc. Canth. Carb-v. card-m. Cham. chin. cic. cocc. coff. COLCH. Coloc. Crot-c. Crot-h. cupr. Echi. euph. ferr-ar. ferr-p. Ferr. gamb. Gels. graph. guaj. HYOS. iod. Ip. kali-ar. kali-bi. Kali-c. Kali-chl. kali-i. Kali-n. kali-p. LACH. LAUR. LYC. med. Merc-c. Merc. Mez. Nux-v. Op. Ox-ac. PHOS. plb. podo. Puls. PYROG. RHUS-T. sabin. Sec. Sil. spong. squil. Stram. Sulph. TER. thuj. tub. uran-met. Uran-n. urt-u. Verat-v. Verat. vip.

ABDOMEN - PAIN – cramping Abrot. acal. acet-ac. Acon. adren. aesc. aeth. AGAR. ail. alet. all-c. ALOE alum-p. alum-sil. Alum. Alumn. Am-c. AM-M. ambr. ammc. Anac. anan. ang. Ango. anis. Ant-c. Ant-t. anth. aphis Apis apoc. aran. arg-cy. arg-met. Arg-n. arge. arist-cl. arn. ars-i. ars-s-f. ars-s-r. Ars. Asaf. Asar. aur-ar. aur-i. aur-m. aur-s. Aur. bapt. bar-c. bar-i. Bar-m. bar-s. BELL. Berb. Bism. Borx. Bov. brom. Bry. bufo but-ac. cact. Caj. calad. calc-i. Calc-p. calc-s. calc-sil. CALC. camph. cann-s. canth. caps. Carb-ac. Carb-an. CARB-V. carbn-dox. CARBN-S. card-b. card-m. carl. cassia-s. castm. catar. caul. Caust. cedr. cere-b. CHAM. CHEL. chen-v. Chin. chinin-ar. Cic. Cina cinch. cinnb. clem. cob. coc-c. COCC. Coff. Colch. coll. COLOC. colocin. Con. conv. Cop. corn. croc. crot-h. Crot-t. cub. Cupr-act. Cupr-ar. CUPR. Cycl. cyt-l. Dig. DIOS. dros. DULC. echi. echit. elaps Elat. erech. erig. eryt-j. Eup-per. eup-pur. Euph. Euphr. eupi. ferr-ar. ferr-p. Ferr. fil. gamb. Gels. gent-c. glon. gnaph. Gran. GRAPH. Grat. guaj. guat. Ham. Hell. Hep. hist. Hydr. hydr. Hyos. hyper. IGN. iod. IP. Iris Iris-t. jab. Jal. jatr-c. jug-r. kali-ar. Kali-bi. Kali-br. Kali-c. kali-i. kali-m. kali-n. kali-p. Kali-pic. Kali-s. kali-sil. Kreos. Lac-c. Lach. lact. lat-m. Laur. lec. Led. lept. liat. Lil-t. Lim. lob. luf-op. LYC. lycps-v. lyss. M-arct. m-aust. Mag-c. MAG-M. MAG-P. mag-s. manc. mand. mang. mentho. meny. merc-c. Merc. merl. Mez. micr. Morph. Mosch. Mur-ac. naja Nat-ar. Nat-c. nat-f. Nat-m. nat-p. Nat-s. nicc. Nit-ac. Nux-m. NUX-V. oci-sa. ol-j. olnd. onis. onos. OP. oreo. ox-ac. paeon. pall. Par. paraf. Petr. PH-AC. phel. phos. Phyt. Pic-ac. plan. Plat. Plb-act. plb-chr. PLB. PODO. polyg-h. prun. psor. ptel. PULS. pyrog. rad-br. Ran-b. ran-s. Raph. rat. rauw. Rheum rhod. Rhus-t. rhus-v. rob. Rumx. ruta sabad. sabin. samb. sang. saroth. sars. Sec. senec. seneg. SENN. Sep. SIL. Sin-n. Spig. spira. SPONG. squil. STANN. Staph. Stram. Stront-c. STRY. Sul-ac. sulfa. SULPH. sumb. tab. tarax. Tarent. tell. Ter. teucr. Thuj. trom. tub. Valer. verat-v. VERAT. verb. vesp. vib. viol-t. vip. zinc-fcy. zinc-p. Zinc. ZING.

ABDOMEN - PAIN - diarrhea – during Aeth. Agar. aloe alum. am-c. am-m. Anac. ang. ant-t. apoc. aran. Arg-n. arn. ars-i. Ars. asaf. asar. bapt. bar-c. Bell. bism. borx. bov. Bry. cact. calad. calc-p. calc. canth. caps. carb-an. carb-v. carbn-s. caust. cench. CHAM. Chin. chinin-ar. cemic. cob-n. cob. Cocc. Colch. COLOC. com. con. Cop. croc. Crot-t. cupr-ar. cupr. cycl. dig. DIOS. dros. dulc. euph. ferr-p. fl-ac. flor-p. fuch. GAMB. gels. Gran. graph. ham. hell. hep. hura ign. iod. Ip. iris jug-r. kali-ar. kali-bi. Kali-c. kali-i. kali-m. kali-n. kali-p. kali-s. lach. laur. Lyc. lycps-v. m-arct. m-aust. Mag-c. mag-m. mang. Med. meny. MERC-C. merc-i-r. Merc. mez. mur-ac. nat-c. nat-m. Nat-s. nit-ac. Nux-v. op. ox-ac. petr. phos. plb. PODO. puls. Rheum rhus-t. rhus-v. rumx. sabad. sanic. sars. sec. senec. seneg. sep. sil. spig. spong. stann. staph. stram. stront-c. Sulph. tab. ter. THUJ. Trom. Verat. viol-t. zinc-s. zinc. zing.

ABDOMEN - PAIN - drawing pain abrot. acet-ac. acon. agar. agn. aloe alum. alumn. am-c. am-m. **Anac.** ang. ant-t. apis arg-n. ars-i. ars. asaf. aur-i. aur-m. aur. bar-c. bar-i. **Bell.** berb. borx. bov. bry. **Calad.** calc-s. **Calc.** camph. cann-s. **CAPS.** **Carb-v.** carb-n-s. **Card-m.** caust. cham. chel. chin. cic. clem. cocc. colch. **Coloc.** con. croc. cupr-act. **Cupr.** dig. dros. ferr. gels. **Gran.** graph. grat. hell. **Hep.** hir. hyos. **Ign.** iod. jug-r. kali-ar. kali-c. kali-n. kreos. lach. **Laur.** led. **Lyc.** lyss. m-ambo. m-arct. m-aust. mag-c. **Mag-m.** mag-s. mang. meny. merc-c. merc. mez. mosch. murx. nat-ar. **Nat-c.** nat-m. nat-s. **Nit-ac.** **Nux-v.** op. par. petr. phos. **Plat.** plb. **Podo.** ptel. **PULS.** ran-b. rheum rhod. rhus-t. ruta sabin. sang. sars. sec. seneg. **SEP.** spig. spong. squil. stann. staph. stram. stront-c. sulph. sumb. tarax. teucr. thuj. valer. verat-v. verat. zing.

ABDOMEN - PAIN - flatus; passing - amel. all-c. aloe am-c. arn. bism. **Calc-p.** **Carb-v.** cham. **Cimx.** coloc. **Con.** corn. crot-t. dulc. ferr. **Graph.** grat. **Guaj.** **Iris** jatr-c. kali-n. **Lyc.** mag-c. merc-c. **NAT-AR.** nat-m. **Nat-s.** nux-m. ox-ac. phyt. plb. **Psor.** **Rumx.** **Sep.** sil. spong. sulph. **Tarent.** til.

ABDOMEN - PAIN – Intestines **Dios.** lacer. tab. thal-met.

ABDOMEN - PAIN – Sides acon. agar. all-c. **Aloe** alum. ant-t. ars. asar. bell. **Borx.** brom. bry. cadm-s. calc. canth. carb-an. carb-v. castm. **Cham.** chin. coloc. com. con. cupr. elaps eup-pur. eupi. ferr-ar. ferr. fl-ac. graph. grat. haem. hep. ign. iris kali-n. kalm. lach. laur. lith-c. lyc. m-ambo. mag-c. manc. med. mur-ac. murx. naja nat-c. nat-m. **Nat-s.** **Nux-v.** par. phos. plb. prun. rhus-t. rhus-v. sars. sec. seneg. sep. sphing. sul-ac. sulph. tarent. thuj. valer. zinc.

ABDOMEN - PAIN - stool - after - amel. agar. aloe alum. apoc. ars. bapt. borx. bov. bry. **Calc-p.** **Carb-v.** chel. chinin-s. cemic. cinnb. coc-c. **COLCH.** **COLOC.** dig. dios. dir. ferr. **GAMB.** gels. grat. helon. mag-c. nat-ar. nat-c. **Nat-s.** **NUX-V.** phos. podo. **Rheum** **Rhus-t.** senec. sil. sulph. thuj. trom. verat. zinc.

ABDOMEN – RETRACTION acon. agar. **Alum.** am-c. **Apis** arn. ars. **Bar-c.** bell. borx. **Bry.** calc-p. camph. canth. **Carb-ac.** **Carb-v.** caust. **Cocc.** colch. **Con.** crot-t. **Cupr.** dig. **Dros.** elat. euph. gamb. **HYDR.** **Iod.** iodof. jatr-c. kali-bi. kali-br. kali-c. laur. led. lob. lyc. merc-c. merc. mez. mosch. mur-ac. nat-c. **Nat-m.** nat-n. **Nux-v.** op. paeon. phos. plat. **Plb-act.** plb-chr. **PLB.** podo. ptel. puls. quas. sec. sil. staph. stram. sul-ac. **Sulph.** **Tab.** ter. thal-s. thuj. valer. **Verat.** **Zinc.**

ABDOMEN - RUMBLING - colitis begins; for several days before puls.

CHILL - DIARRHEA - during - mucous colitis **cop.**

EXTREMITIES - PAIN - Joints - wandering, shifting pain aesc. anag. **Ant-t.** arb. **Ars.** **AUR.** berb. **Calc-p.** **Camph.** cedr. chel. **Cinnb.** **Coca** **Cocc.** **Colch.** ferr-p. form. hell. **Hyper.** **Iris** **KALI-BI.** Kali-s. **Kalm.** lac-ac. **LAC-C.** **Lach.** **Mang.** **Merc-c.** nat-ar. nat-s. nux-m. phyt. **PULS.** **Rhod.** sabin. tub.

EXTREMITIES - PAIN – Joints abrot. **Acon-c.** acon. aesc. agar-ph. agar. all-c. alum-p. alum-sil. **Alum.** alumn. am-c. am-m. am-p. anh. **Apis** **Apoc-a.** **Apoc.** aran. **ARG-MET.** arg-n. arist-cl. **ARN.** **Ars-i.** ars-s-f. **Ars.** arthr-u. asaf. asc-t. aster. aur-ar. aur-i. aur-s. aur. bar-c. bar-i. bar-m. bell-p. **Bell.** benz-ac. berb. **Bol-la.** **BRY.** cadm-met. caj. **Calc-f.** calc-i. **CALC-P.** calc-s. **Calc.** cann-i. **Caps.** carb-ac. carb-an. **Carbn-s.** casc. **Caust.** cedr. **Cham.** chel. **Chin.** chinin-ar. cemic. **Cimx.** **Cinnb.** cist. **Cit-v.** **Cocc.** **Coch.** **Colch.** **Coloc.**

com. con. convo-s. cop. cot. croc. crot-t. cycl. daph. dig. dios. dros. **Dulc.** euon. eys. **Ferr-ar.** ferr-i. **Ferr-p.** **Ferr.** gels. **Guaj.** hell. hippoz. hist. hydr. hydrc. ign. lod. ip. iris jac-c. jatr-c. **Kali-bi.** **Kali-c.** kali-n. kali-p. kali-s. kali-sil. **Kalm.** kreos. **Lac-ac.** **Lac-c.** lappa **LED.** **Lyc.** lyss. mand. mang-act. **Mang.** med. **Merc.** mez. morph. **Nat-ar.** nat-m. **Nat-s.** nit-ac. **NUX-V.** ol-an. par. penic. petr. **Ph-ac.** **Phos.** **Phyt.** **PLB.** psil. **PULS.** rad-br. **Ran-b.** ran-s. raph. **Rheum Rhod.** **RHUS-T.** rumx. **Ruta** sabad. **Sabin.** sal-ac. **Sang.** sel. senec. **Sil.** sol-ni. sol-t-ae. **Staph.** sul-ac. **Sulph.** syph. tarent. ter. thuj. tub-r. tub. verat-v. zinc.

EYE - INFLAMMATION - Episclera and sclera acon. bell. bry. kali-i. merc-c. rhus-t. ter. **THUJ.**

EYE - INFLAMMATION – Uvea toxo-g.

GENERALS - ANEMIA - disease; from exhausting acet-ac. alst. **Calc-p.** **Chin.** chinin-s. **Ferr.** helon. kali-c. **Nat-m.** **Ph-ac.** **Phos.** sec.

GENERALS - ANEMIA - hemorrhage; after **Arg-o.** **Ars.** **Calc.** **Carb-v.** **CHIN.** crot-h. **FERR.** **Helon.** hydr. ign. **Lach.** nat-br. **Nat-m.** **Nux-v.** **Ph-ac.** **Phos.** sabin. staph. **Sulph.**

GENERALS - ANEMIA - nutritional imbalance; from alet. alum. **Calc-p.** ferr. helon. nux-v.

GENERALS - EMACIATION - nutrition; gradual emaciation from impaired ars.

GENERALS – MALNUTRITION abrot. alf. aln. bac. **BAR-C.** berb-a. borx. **Calc-hp.** **CALC-P.** **Calc.** caust. crot-h. glyc. **Graph.** **Ichth.** iod. kreos. **Lac-c.** lac-d. lec. **Lyc.** med. **NAT-M.** ol-j. pin-s. sabal sacch. sanic. sil. thyr.

KIDNEYS – STONES act-sp. alum. am-c. am-m. ambr. **Ant-c.** apoc. **Arg-n.** arn. baros. bell-p. bell. **BENZ-AC.** **Berb.** cact. cal-ren. **CALC.** **Cann-xyz.** **Canth.** cham. chin. chinin-s. **Chlf.** cimic. coc-c. coloc. **Dios.** epig. equis-h. erig. ery-a. eup-pur. fab. frag. gali. guat. hed. hedeo. hep. hydrang. ipom-p. kali-bi. kali-c. kali-i. lach. lipp. **LITH-C.** **LYC.** mag-p. med. mill. nat-m. **Nit-ac.** nux-m. nux-v. oci. onis. op. oxyd. **PAREIR.** **Petr.** **Phos.** pipe. polyg-h. rub-t. **Ruta** saroth. **SARS.** **Sep.** **Sil.** solid. **Stigm.** sulfa. sulph. **Tab.** ter. thlas. thuj. urt-u. uva vesii. **Zinc.**

MOUTH – APHTHAE acet-ac. achy-a. **Aeth.** agar. all-s. allox. alum-sil. alum. anac-oc. anan. **Anis.** ant-c. ant-t. apis aral. arg-met. arg-n. **Ars-i.** ars-s-f. **ARS.** **Arum-t.** asim. astac. aur-ar. aur-i. aur-m. aur-s. aur. **BAPT.** bell. **Berb.** **BORX.** brom. bry. cadm-met. calc-i. calc-sil. **Calc.** **Camph.** canth. caps. **Carb-ac.** **Carb-an.** **Carb-v.** carbn-s. caul. cean. cham. **Chel.** **Chin-b.** chin. chinin-ar. chlor. cic. cinnb. clem. cocc. corn. cub. der. **Dig.** dulc. elaps eucal. **Eup-a.** ferr-s. **Ferr.** ferul. gamb. **Hell.** **Hep.** hippoz. hydr. **Hydrin-m.** lod. lp. Jug-c. **Kali-ar.** **Kali-bi.** **Kali-br.** **Kali-c.** **KALI-CHL.** kali-i. **Kali-m.** kali-s. kali-sil. Kreos. **Lac-ac.** lac-c. lac-d. **Lach.** **Lyc.** **Mag-c.** mand. med. **MERC-C.** **Merc-cy.** **Merc-d.** **MERC.** **MUR-AC.** **Myric.** **Nat-ar.** nat-c. nat-hchls. **Nat-m.** **Nit-ac.** nux-m. **NUX-V.** oci-sa. ox-ac. oxyg. petr. **Phos.** phyt. plan. **Plb.** psil. psor. ran-b. ran-s. **Rhus-g.** rhus-t. sal-ac. sanic. **Sars.** sec. **Semp.** sep. sil. sin-n. **Staph.** **SUL-AC.** sul-i. **SULPH.** tarent. ter. thuj. tub. vinc. zinc.

RECTUM - DIARRHEA - alternating with – constipation **Abrot.** acet-ac. agar. ail. aloe alum. am-m. **ANT-C.** ant-t. anth. **Arg-n.** ars-i. ars-s-f. **Ars.** aur-ar. aur-i. aur-m-n. aur-s. **Aur.** bell. berb. **Bry.** but-ac. calc-chln. calc. **Carb-ac.** carbn-s. **Card-m.** **Casc.** **CHEL.**

Cimic. cina Cob. coff. colch. Coll. Con. cop. cor-r. crot-h. Cupr. Dig. dios. ferr-cy. Ferr-i. Ferr. gamb. glycyr-g. gnaph. Graph. grat. guat. hell. Hep. hom-xyz. Hydr. Ign. Iod. kali-ar. kali-bi. Kali-c. Kali-n. kali-s. Lac-d. Lach. Lact. Lec. lil-t. Lyc. mag-s. Manc. Mang. merc. mez. nat-ar. nat-c. Nat-m. nat-p. Nat-s. NIT-AC. Nux-m. NUX-V. OP. Phos. Plb. PODO. polyg-h. psor. Ptel. Puls. rad-br. rhus-t. Ruta sang. saroth. sars. sep. Staph. stram. sul-i. Sulph. sumb. Tab. thymol. Tub. verat. vib. visc. zinc-p. zinc.

RECTUM - DIARRHEA - night - midnight - after - 1 h - 1-3 h asc-t.

RECTUM - DIARRHEA - night - midnight - after - 1 h - 1-4 h Psor.

RECTUM - DIARRHEA - night - midnight - after - 12 h; until ars. cist.

RECTUM - DIARRHEA - night - midnight - after - 2 h - 2-3 h Iris phos.

RECTUM - DIARRHEA - night - midnight - after - 2 h aran. Ars. cic. phos. rhus-v. tab.

RECTUM - DIARRHEA - night - midnight - after - 3 h - 3-11 h nat-m.

RECTUM - DIARRHEA - night - midnight - after - 3 h - 3-4 h aeth. Kali-c. lyc.

RECTUM - DIARRHEA - night - midnight - after - 3 h cimic. mag-c. nat-c. petr. phos. podo.

RECTUM - DIARRHEA - night - midnight - after - 4 h - 4-6 h All-c. phos.

RECTUM - DIARRHEA - night - midnight - after - 4 h - 4-7 h nuph.

RECTUM - DIARRHEA - night - midnight - after - 4 h fl-ac. form. mang. Petr. phos. PODO. Rhus-t. sec.

RECTUM - DIARRHEA - night - midnight - after - 5 h - 5-6 h Nuph.

RECTUM - DIARRHEA - night - midnight - after - 5 h Aloe alum-sil. carbn-s. Phos. podo. rumx. SULPH. syph. tub.

RECTUM - DIARRHEA - night - midnight – after all-c. aloe Arg-n. ars-s-f. ARS. arum-t. asc-t. bry. Chin. Chinin-ar. cic. cist. dros. FERR-AR. ferr-p. ferr. fl-ac. gamb. hipp. iris KALI-AR. kali-c. kali-s. lyc. manc. merc-c. nat-ar. nat-m. Nux-v. rhus-t. sec. squil. staph. stront-c. SULPH. Verat.

RECTUM - DIARRHEA - night - midnight – before mag-c. nux-m. puls. rhus-t.

RECTUM - DIARRHEA – night abrot. acon. aeth. aloe anac. ang. ant-c. ant-t. ARG-N. Arn. ars-s-f. ARS. arum-t. asaf. asc-t. aur-ar. aur-m. aur-s. Aur. bar-c. bar-s. borx. bov. brom. Bry. caj. canth. Caps. carb-v. Carbn-s. Caust. cench. Cham. Chel. CHIN. CHININ-AR. Chinin-s. chlol. Cinnb. cist. colch. Con. Crot-t. cub. diosm. DULC. FERR-AR. ferr-p. Ferr. fl-ac. Gamb. Graph. Grat. hep. hipp. Hyos. ign. ip. IRIS jal. KALI-AR. Kali-bi. Kali-c. kali-p. kali-s. kali-sil. kreos. LACH. lith-c. lyss. Mag-c. mag-m. manc. merc-c. MERC. Mosch. NAT-AR. Nat-c. nat-m. Nat-p. NUX-M. petr. ph-ac. Phos. PODO. PSOR. PULS. Rheum Rhus-t. sang. sel. senec. Sep. Sil. stront-c. Stry. SUL-AC. SULPH. Tab. ther. Tub. verat. visc. zinc.

RECTUM - PAIN - colitis; during – tenesmus MERC-C.

STOOL - FORCIBLE, sudden, gushing **Acal.** acon. ail. aloe am-c. ant-c. **Apis Apoc.** aran. **Arg-n.** arn. **Ars.** aster. aur-fu. bar-c. bell. **BRY.** calc-f. calc-p. canth. cench. cic. cist. cob. cocc. **Colch.** coloc. **Crot-h.** **CROT-T.** **Cupr.** cycl. dig. dios. dirc. **Dulc.** **ELAT.** fago. **Ferr.** **Gamb.** graph. **GRAT.** **Ign.** lod. ip. **Iris jal.** **JATR-C.** **Kali-bi.** kali-n. lac-c. lach. lyc. lycps-v. mag-c. **Mag-m.** mag-p. merc-sul. **Merc.** mez. naja **NAT-C.** **NAT-M.** **Nat-s.** nicc. nux-v. op. **Ox-ac.** **Petr.** **Phos.** pic-ac. plat. **PODO.** psor. puls. **Ran-b.** **Raph.** rheum rhod. rhus-t. rhus-v. rumx. sang. sars. **SEC.** seneg. **Sep.** sil. sulfonam. **Sulph.** tab. **Thuj.** trom. tub. **VERAT.** verb. viol-t. zinc.

STOOL - HARD - followed by - fluid stool agar. aloe alum. am-c. am-m. ang. arund. asaf. bar-c. borx. **BOV.** calc-f. calc-p. **CALC.** canth. carb-an. carb-n-s. chin. coff. coloc. euph. graph. grat. ign. kali-bi. kali-n. lact. **LYC.** mag-c. mag-m. mosch. mur-ac. nat-c. **Nat-m.** nat-s. nux-m. nux-v. olnd. op. ph-ac. phos. plat. plb. rheum rhus-t. sars. sep. spig. spong. stann. staph. **Sul-ac.** sulph. tarent. zinc.

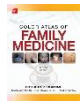
STOOL – MUCOUS acon. aesc. **Aeth.** agar. agra. allox. aloe alum. am-c. **Am-m.** ang. ant-c. ant-t. **Apis** **ARG-N.** arist-cl. **Arn.** ars-i. **Ars.** **Asar.** asc-t. aur-m-n. bac. **Bapt.** bar-c. **Bell.** **Berb.** **Borx.** **Brom.** **Bry.** cact. cadm-s. calc-act. **Calc-p.** calc. **Canth.** **CAPS.** **Carb-ac.** carb-an. **Carb-v.** carb-n-s. castm. **Caust.** **Cham.** chap. **Chel.** **Chin.** cic. cimid. cina cinnb. **Cocc.** **COLCH.** **COLL.** **Coloc.** con. **Cop.** **Corn.** **Crot-c.** **Crot-t.** cupr. cycl. dig. dios. dirc. dros. **Dulc.** elat. euph. ferr-ar. ferr-i. ferr-p. ferr. gal-ac. **GAMB.** geo. **Glycyrg.** **GRAPH.** grat. guaj. guat. ham. **HELL.** **Hep.** hydr. **Hyos.** ign. lod. Ip. **Kali-bi.** **Kali-c.** **Kali-chl.** kali-i. kali-m. kali-n. kali-p. **KALI-S.** kali-sil. lach. laur. led. lil-t. lyc. lycps-v. m-aust. **Mag-c.** mag-m. mag-s. **MERC-C.** merc-d. **MERC.** **Mur-ac.** naja nat-ar. nat-c. nat-m. nat-p. **Nat-s.** nicc. **Nit-ac.** nux-m. **NUX-V.** ox-ac. oxyt. par. petr. **Ph-ac.** **PHOS.** **Phyt.** **Plb.** **Podo.** prun. **Psor.** **PULS.** raph. **Rheum rhod.** **Rhus-t.** ric. **Ruta** sabad. sabin. samb. **Sec.** sel. seneg. sep. **Sil.** solid. spig. **Squil.** **Stann.** **Staph.** stict. **Sul-ac.** **SULPH.** tab. ter. trom. tub. urt-u. vario. **VERAT.** viol-t.

STOOL – THIN abrom-a. acet-ac. **Aeth.** agar. agn. allox. **Aloe** alum-p. alum-sil. **ALUM.** ammc. anan. ang. **ANT-C.** ant-t. **APOC.** **Aran.** arg-n. **Arn.** ars-s-f. **Ars.** arum-t. **ASAF.** asar. asc-t. aster. aur-ar. aur-s. aur. bapt. bar-m. **Bell.** **BENZ-AC.** bism. borx. **Bov.** brom. **Bry.** cadm-met. cain. calad. calc-p. calc-sil. **CALC.** camph. cann-xyz. canth. **Carb-ac.** carb-an. **Carb-v.** carb-n-o. **CARBN-S.** cassia-s. castor-eq. **Caust.** **Cedr.** **Cham.** **Chel.** **Chin.** **Chinin-ar.** **Cic.** cist. **Clem.** **Cocc.** **Coff.** **COLCH.** **Coloc.** **Con.** cop. corn. cortiso. **CROT-T.** cupr. cycl. dig. dios. dros. dulc. epil. euph. ferr-p. ferr. **GAMB.** **GRAPH.** **Grat.** guaj. guat. hell. **Hep.** hip-ac. **Hydr.** **hyos.** ign. ind. ip. iris jal. **JATR-C.** **Kali-bi.** kali-c. kali-n. kali-s. **Lac-ac.** **Lach.** laur. lept. luf-op. **LYC.** m-aust. **Mag-c.** mag-m. mang-s. med. meph. merc-c. merc-i-f. **Merc.** mez. mim-p. **Mur-ac.** narc-ps. nat-ar. nat-c. nat-m. **Nat-p.** **NAT-S.** nicc. nit-ac. **Nuph.** **Nux-m.** **Nux-v.** oci-sa. **OLND.** **Op.** opun-s. osm. par. petr. **PH-AC.** **PHOS.** phyt. **PIC-AC.** plat. **PODO.** **Psor.** ptel. puls. pyrog. ran-s. rat. rheum rhod. **Rhus-t.** rhus-v. rumx. sabad. sabin. samb. sang. saroth. sec. sel. senec. **Sep.** **Sil.** sphing. **Spig.** **Spong.** **Squil.** stann. staph. stront-c. sulfonam. **SULPH.** tab. **Tarent.** tell. **THUJ.** **Trios.** trom. vario. **VERAT.** visc. yohim. zinc.

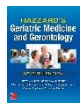
## Bibliography



Chapter 134. Systemic Autoinflammatory Diseases > Early-Onset Inflammatory Bowel Disease (IBD) Fitzpatrick's Dermatology in General Medicine, 8e ... Early-Onset Inflammatory Bowel Disease (IBD) at a Glance Very rare autosomal recessive disorder, early onset IBD (OMIM #613148). Mutations in IL10RA , on chromosome 11q23 or on IL10RB, on chromosome 21q22, encoding the IL-10 receptor Cutaneous features can include early onset...



Chapter 65. Inflammatory Bowel Disease The Color Atlas of Family Medicine, 2e



Common Large Intestinal Disorders > Colon Cancer in IBD Hazzard's Geriatric Medicine and Gerontology, 7e ... The risk of colon cancer in patients with long-standing IBD is a significant complication of the disease. Colon cancer rates generally are higher in patients with UC than those with Crohn disease; it appears to be the degree and extent of ongoing inflammation in the colon that confers...



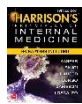
Drugs Used in Gastrointestinal Disorders > G. Drugs Used in Inflammatory Bowel Disease (IBD) Katzung & Trevor's Pharmacology: Examination & Board Review, 11e



Encyclopedia Homoeopathica



Gastrointestinal & Biliary Complications of Pregnancy > A. Course of IBD During Pregnancy and in the Postpartum Period CURRENT Diagnosis & Treatment: Gastroenterology, Hepatology, & Endoscopy, 3e ... A recent meta-analysis of 14 studies reports the effects of disease activity at conception on the course of IBD in 1300 pregnant UC patients and 590 pregnant CD patients. The risk of active disease during pregnancy was much higher if disease was active at conception compared to those in remission...



Inflammatory Bowel Disease > COMMENSAL MICROBIOTA AND IBD Harrison's Principles of Internal Medicine ... The endogenous commensal microbiota within the intestines plays a central role in the pathogenesis of IBD. Humans are born sterile and acquire their commensal microbiota initially from the mother during egress through the birth canal and subsequently from environmental sources. A stable...



Inflammatory Bowel Disease > Diagnostic Criteria for IBD Clinical Genomics: Practical Applications in Adult Patient Care ...-ANCA ) have high sensitivity for IBD in



combination compared to other causes of intestinal inflammation, but sensitivity varies for different ethnic groups (much lower, eg, in regions endemic for tuberculosis). ASCA shows high specificity for CD, and p-ANCA for UC, although patients with CD limited...



Inflammatory Bowel Disease Principles and Practice of Hospital Medicine, 2e



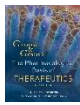
Inflammatory Bowel Disease: Immunologic Considerations & Therapeutic Implications CURRENT Diagnosis & Treatment: Gastroenterology, Hepatology, & Endoscopy, 3e



Inflammatory Bowel Disease: Medical Considerations CURRENT Diagnosis & Treatment: Gastroenterology, Hepatology, & Endoscopy, 3e



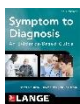
Inflammatory Bowel Disease: Surgical Considerations CURRENT Diagnosis & Treatment: Gastroenterology, Hepatology, & Endoscopy, 3e



Pharmacotherapy of Inflammatory Bowel Disease Goodman & Gilman's: The Pharmacological Basis of Therapeutics, 12e



Radar 10



Weight Loss, Unintentional > Alternative Diagnosis: IBD Symptom to Diagnosis: An Evidence-Based Guide, 3e ... IBD (Crohn disease and ulcerative colitis) are complex diseases. Genetic factors and commensal bacterial factors play a role. They are found most commonly in patients of Jewish descent and among patients with a family history of IBD. Crohn disease is a transmural process that may affect...