

Re-Tuning the Homecast HT3000 Freeview|HD Receiver

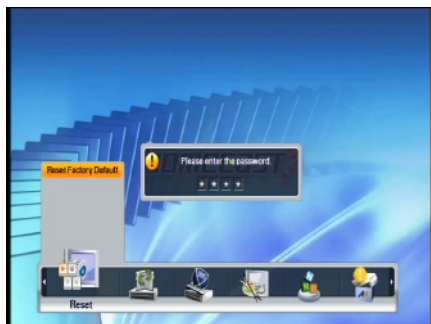
Step 1

Press the MENU button on the remote control and navigate to Reset Factory Default using the Left and Right arrow buttons on the remote control.



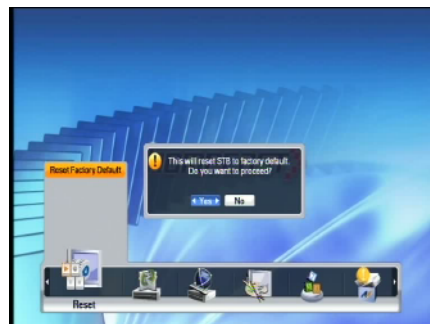
Step 2

Press OK and then enter the password. The default password is 0000. After entering the password, press the OK button.



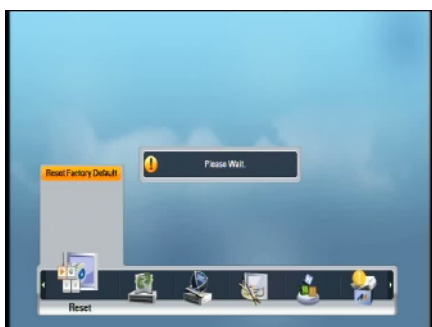
Step 3

Select Yes to confirm you want to reset the receiver to default. Then, press the OK button.



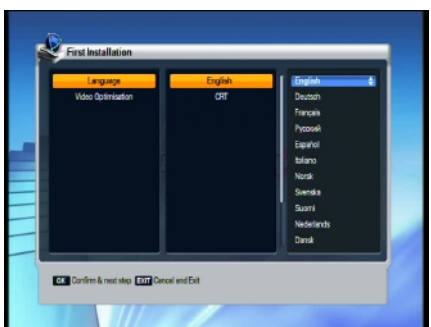
Step 4

The receiver will respond with "Please wait". It will then reset itself and will restart to first installation screen.



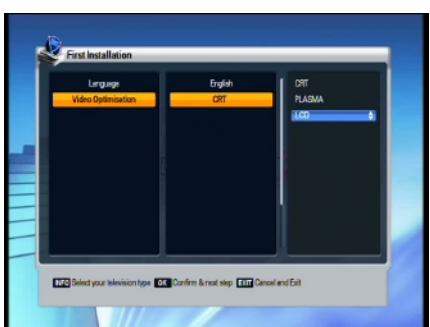
Step 5

Select your Language and press the OK button.



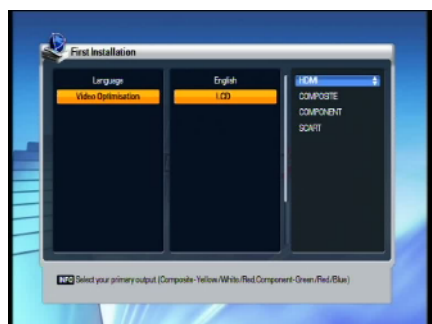
Step 6

Select your Television type and press the OK button.



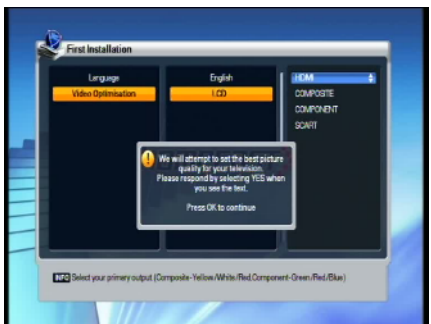
Step 7

Select the primary connection you are using to connect the receiver to your television.



Step 8

If your connection type is HDMI the receiver will try and select the best picture resolution. Follow the instructions for getting the best picture resolution.



Step 9

The receiver will begin auto tuning and once completed will save the channels and exit.

