

WALK 10

GRADING:

SEASON:

SUMMARY DESCRIPTION:

START:

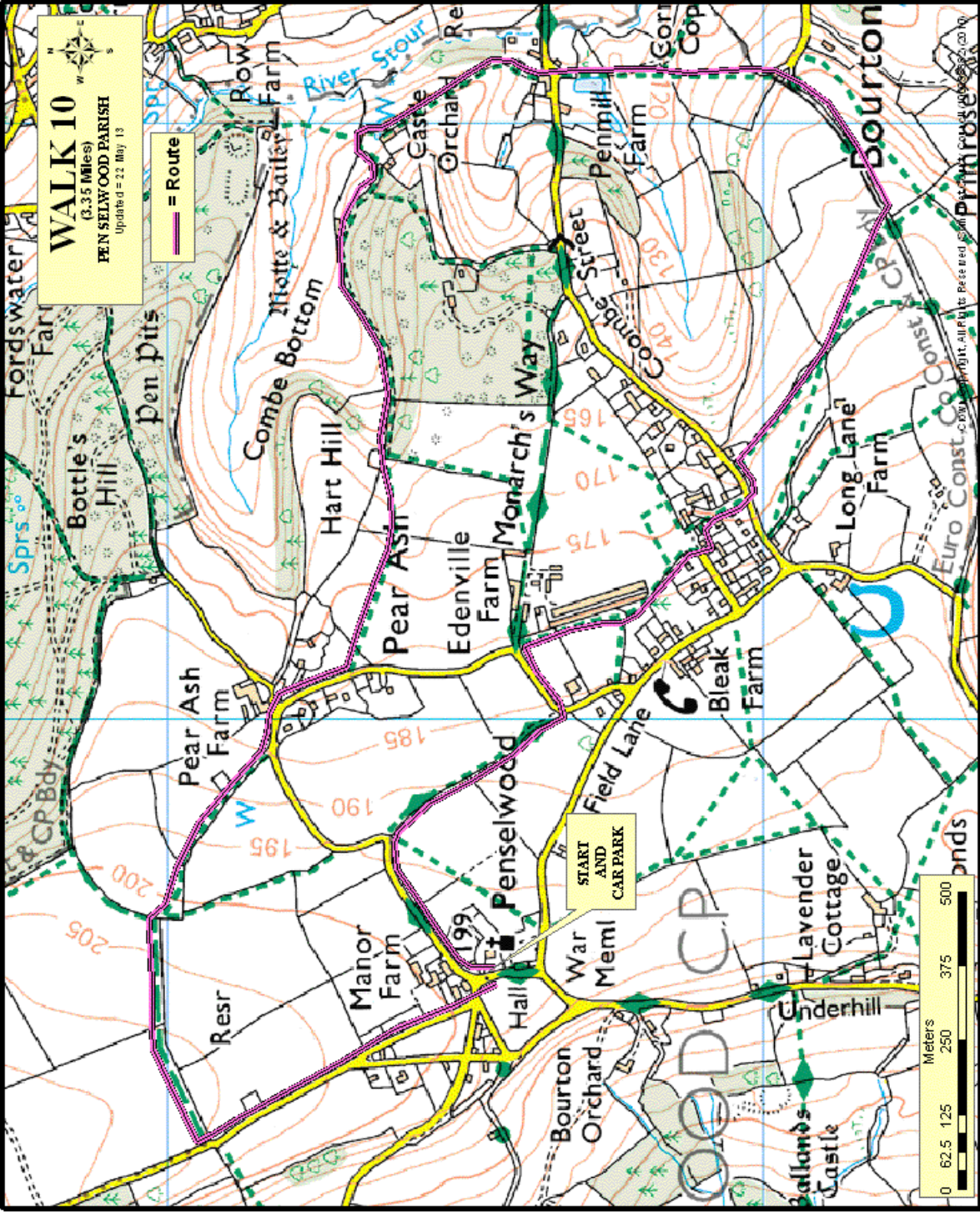
FINISH:

PARKING:

TIME (approx.):

DOG ACCESSIBILITY

DESCRIPTION



WALK 10
(3.35 Miles)
PEN SELWOOD PARISH
Updated = 22 May 13

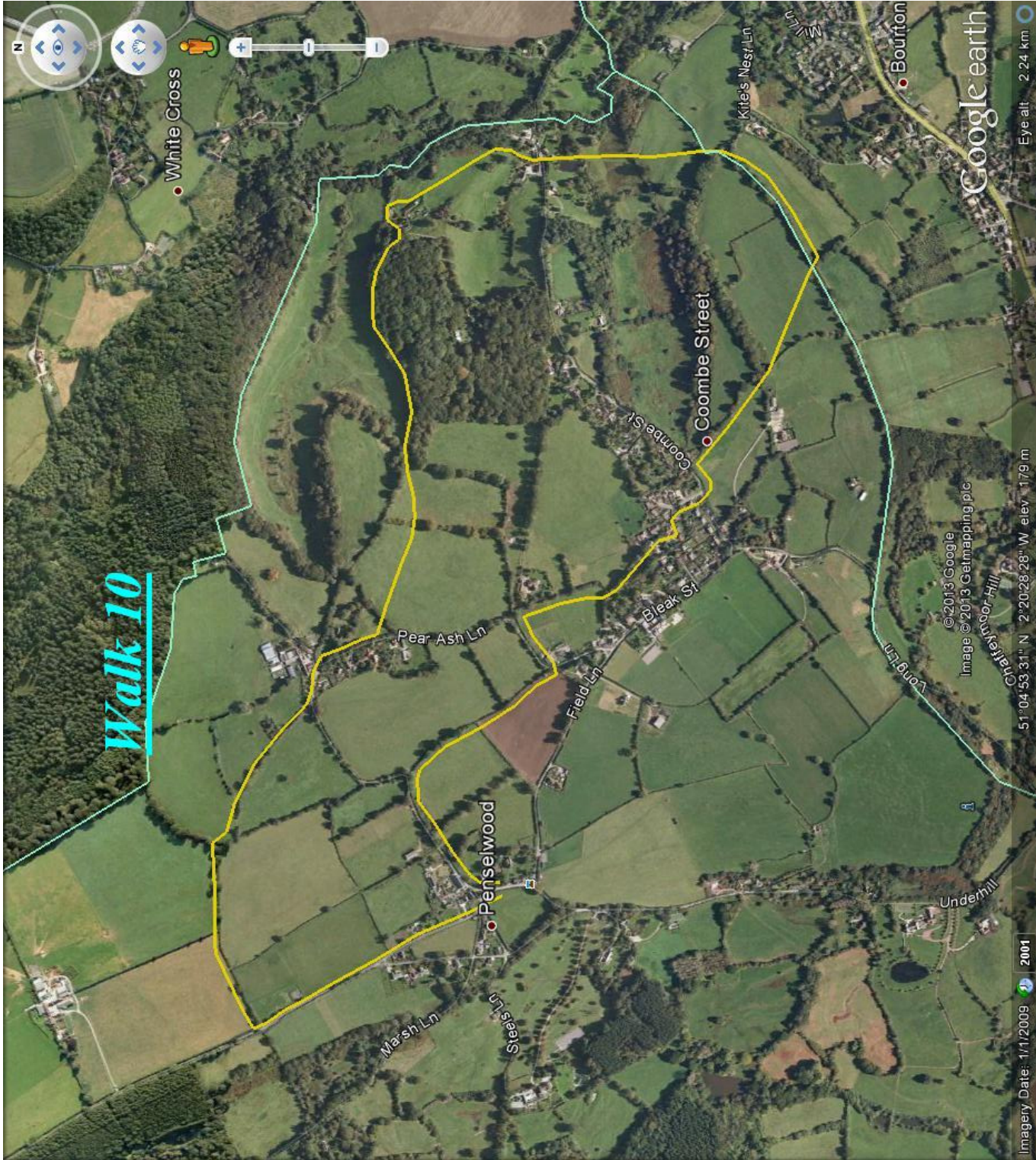
— = Route

START AND CAR PARK

Meters
0 62.5 125 250 375 500

Map labels include: Fordswater, Bottle's Hill, Pen Pits, Combe Bottom, Hart Hill, Pear Ash, Edenville Farm, Penselwood, War Meml, Bourton Orchard, Manor Farm, Resr, Bleak Farm, Long Lane Farm, Underhill, Lavender Cottage, Ballan's Castle, Penmill Farm, Gorn Cop, Euro Const, and Pimrose. Contour lines are labeled with values such as 170, 175, 185, 190, 195, 200, and 205.

Walk 10



Google earth

Eye alt: 2.24 km

©2013 Google
Image ©2013 Getmapping plc
Chaffynor Hill

51°04'53.31" N 2°20'28.28" W elev: 179 m

Imagery Date: 1/1/2009 2001