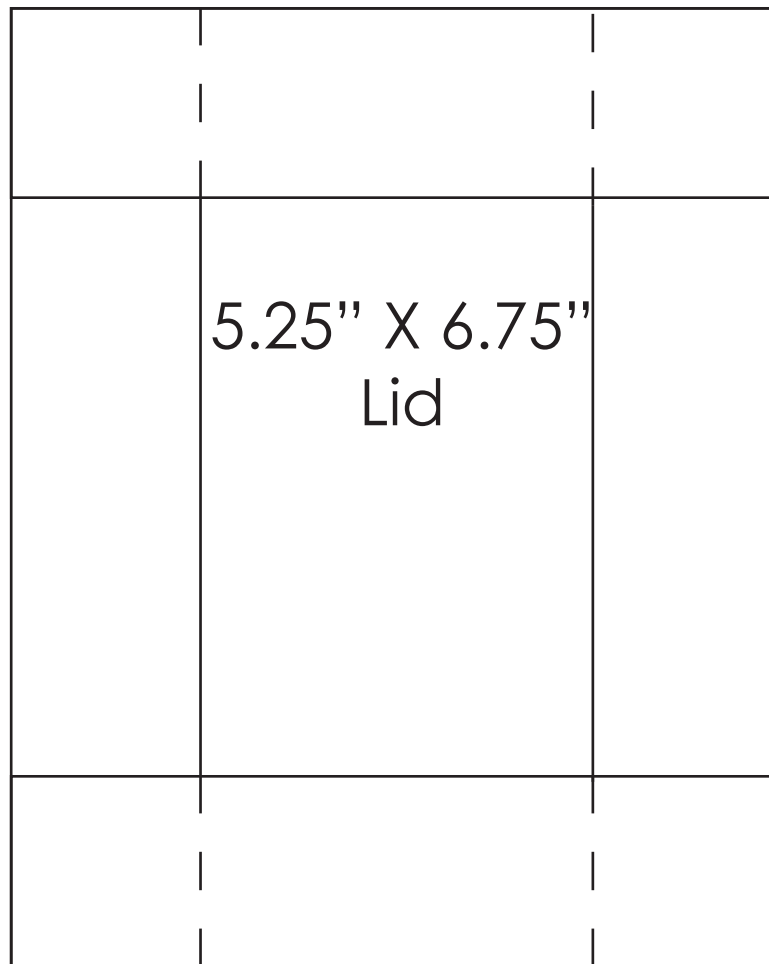


# S'mores Box

copyright 2009 by Gina K. Designs, LLC

template not true to size.

Use measurements as your guide.



Begin with a piece of card stock 6.75 X 5.25" Score all sides at one inch then cut on dotted lines as shown above.

Fold flaps under and secure with Scor-tape for added strength. Decorate sides and top. Make two.

Use three Gina K. Designs Large Clear Boxes and tape them together with Scor-tape. Slip clear boxes onto base and tape down with Scor-tape. Slip lid on top and secure with ribbon, twine or cording.