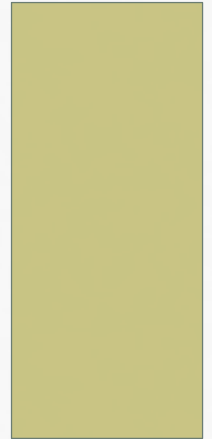




# DEFINING CONSERVATION TARGETS ON A LANDSCAPE SCALE

PFLCC MEETING: NOVEMBER 18 2015



# TECHNICAL TEAM MEMBERS

- **Rebekah Gibble**, Senior Biologist, US Fish & Wildlife Service
- **Caroline Gorga**, Wildlife Legacy Biologist, Florida Fish and Wildlife Conservation Commission
- **Cindy Fury**, Project Leader and Senior Biologist, US Fish & Wildlife Service
- **Mike Legare**, Senior Biologist, US Fish & Wildlife Service
- **James Lyons**, Wildlife Biologist, US Fish & Wildlife Service
- **Andrew Townsend**, Biological Scientist, Florida Fish and Wildlife Conservation Commission

# PROCESS DOCUMENT FOR DEFINING CONSERVATION TARGETS

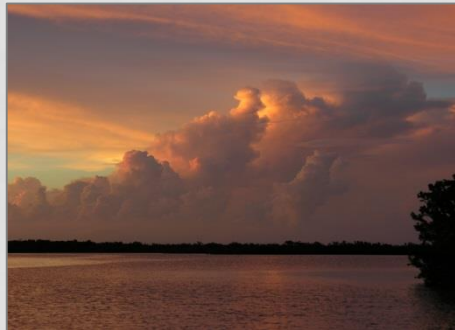
We will deliver the Process Document to the PFLCC on:  
**November 30 2015**

Includes description of the process, framework, terminology,  
progress to date, future directions



# FUTURE DIRECTIONS FOR THE PFLCC

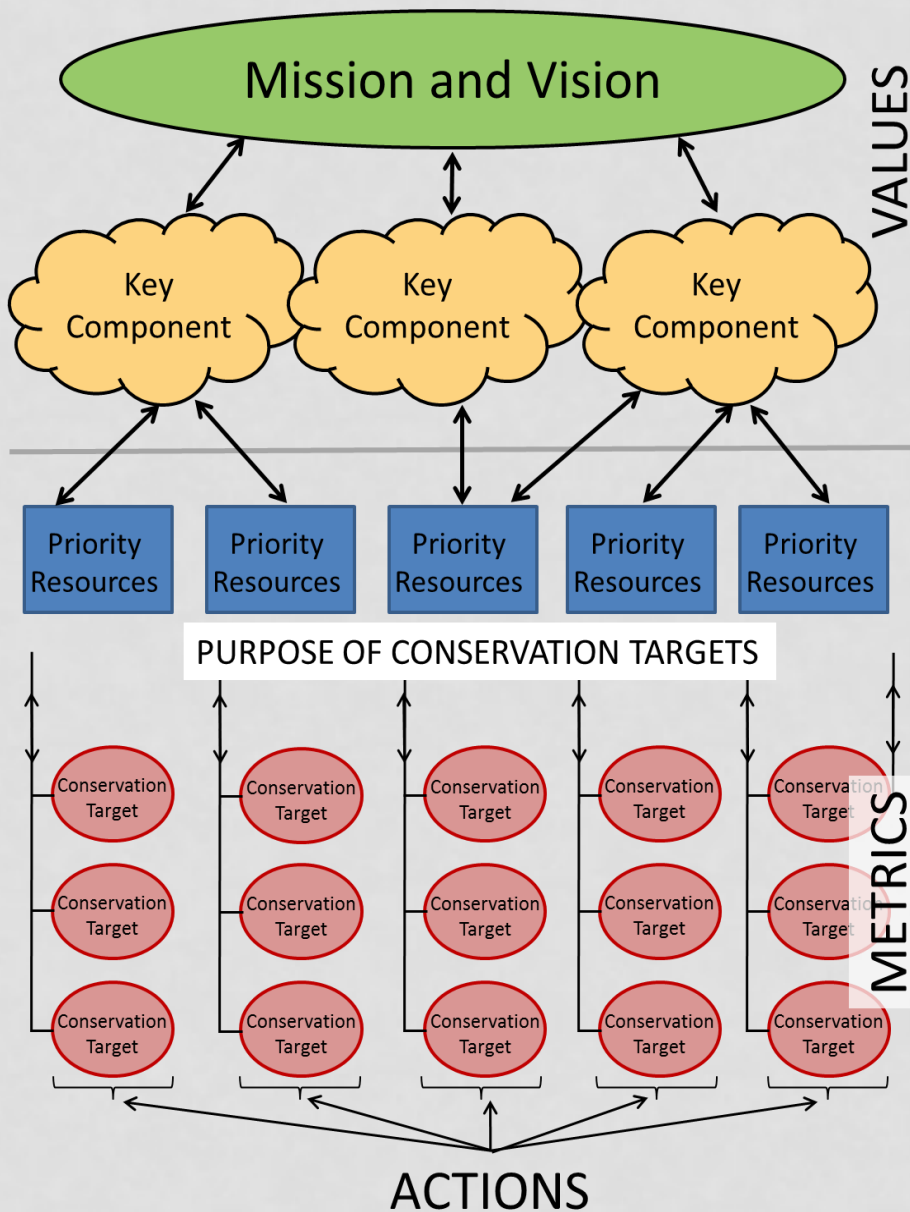
- Refine conservation targets with subject-matter experts
- Steering committee review of conservation targets
- Incorporate conservation targets into conservation design
- Identify and implement management strategies
- Monitor conservation targets for status and trends
- Evaluate conservation targets



# PURPOSE OF CONSERVATION TARGETS

- To assist in biological planning and conservation design to attain a shared planning framework for PFLCC partners
- To collaboratively monitor environmental trends to assess and guide conservation and management actions





- PFLCC partner mission synthesis
- PFLCC vision for the Florida landscape
  
- PFLCC Technical Team
  - Aided in process development
  - Defined 12 priority resources
  - Defined conservation targets criteria and scoring system
  - Drafted preliminary conservation targets
  - Provided names and resources to refine conservation targets

# CONSERVATION TARGET

- Measurable expression of desired resource conditions. Quantifiable biological, chemical, physical, or cultural attributes of a landscape that are important or valued to stakeholders.
- **Measurable attribute** – continuous areas of natural habitat
- **Metric** – hectares of natural habitat
- **Target** – xx areas of habitat greater than yy hectares by 2020

