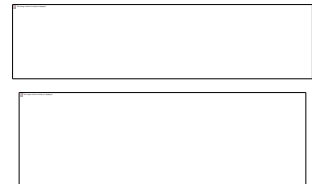


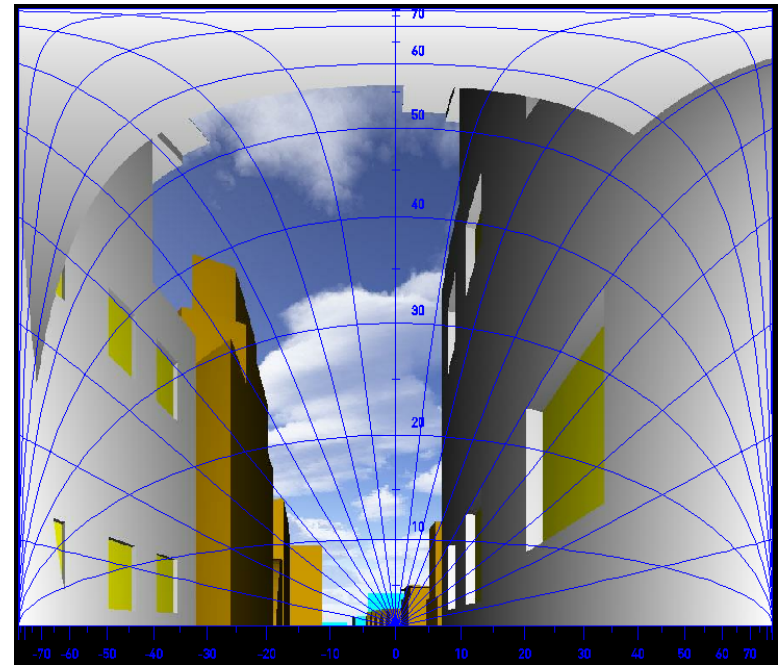
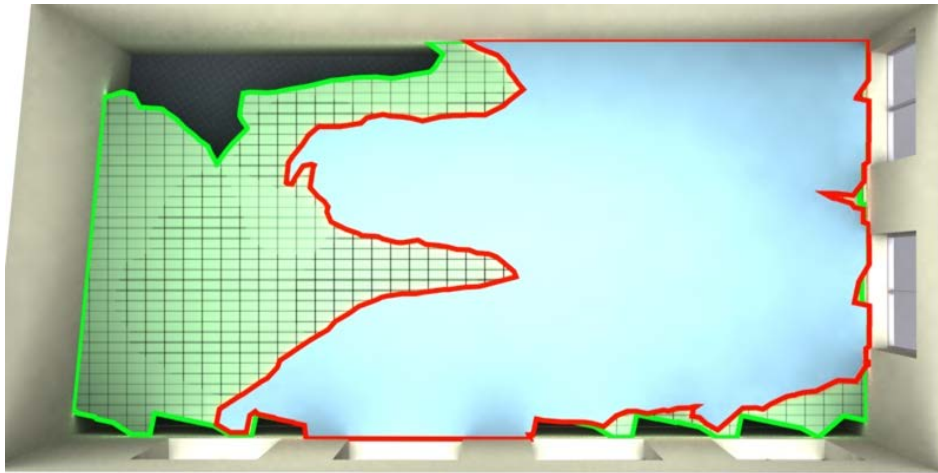
Anstey Horne 

Daylight assessments

1. Traditional daylight metrics used in rights of light and daylight for planning
2. Why we use Radiance-based metrics
3. Why we chose Rhino, Grasshopper & Diva
4. How we are using Rhino, Grasshopper & Diva
5. Conclusion

Traditional daylight metrics





Waldram Diagram

Effect on daylight to neighbouring buildings for rights of light

- 0.2% sky factor contour using Waldram methodology

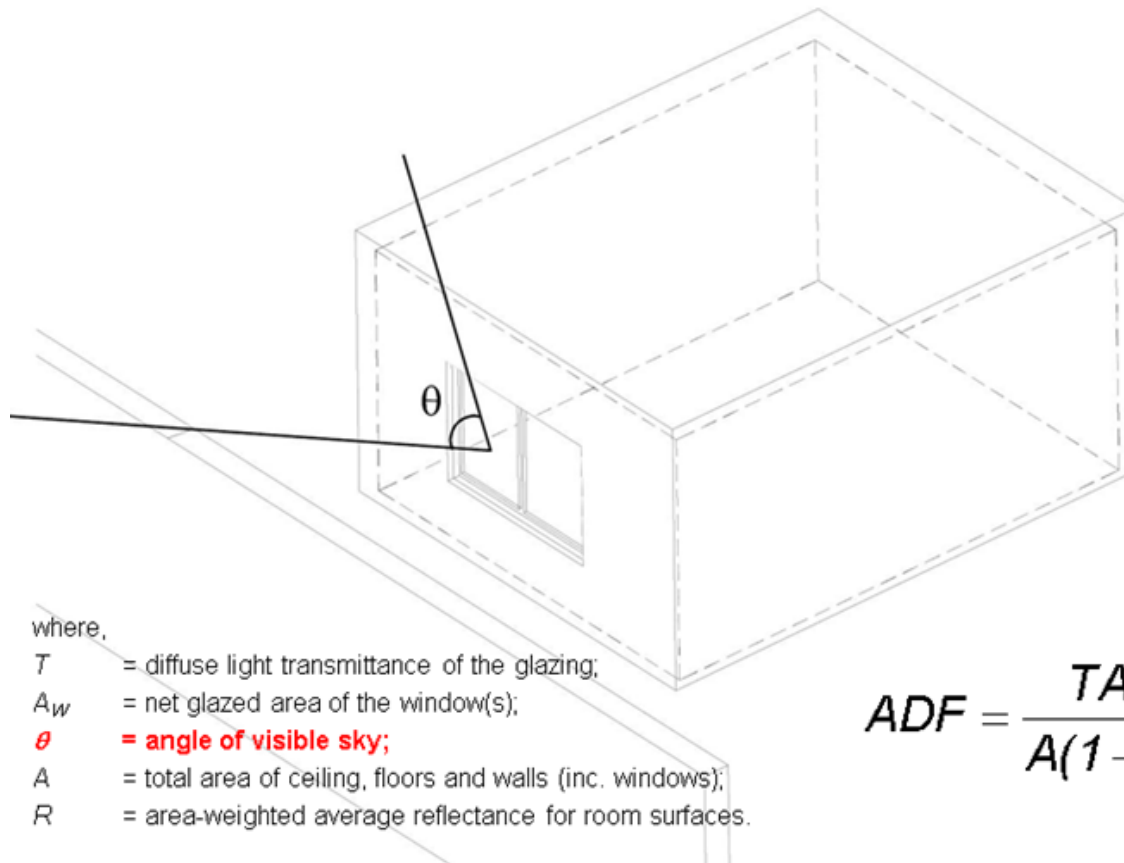
Effect on daylight to neighbouring buildings for town planning

BRE Report 209, '*Site layout planning for daylight and sunlight – A guide to good practice*' (2nd edition, 2011)

$$A(1 - R^2)$$

Impact on neighbours:

- vertical sky component (VSC) – sky visibility at window – potential for daylight
- daylight distribution – pool of direct skylight on working plane

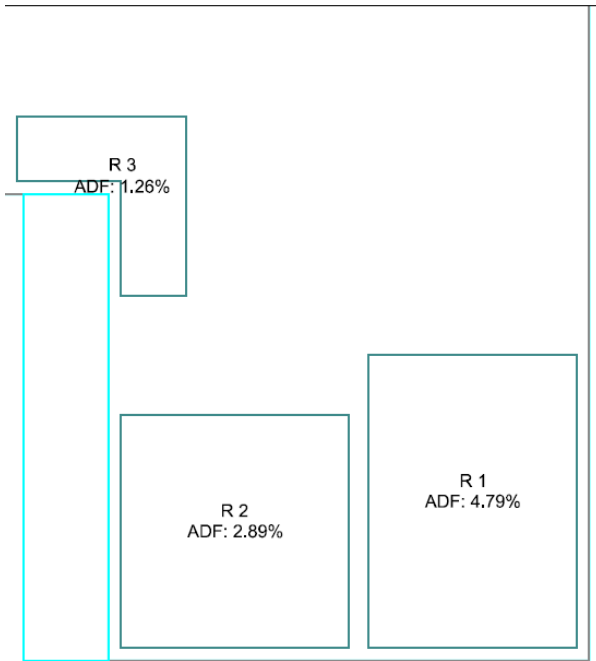


ADF = 1.8%

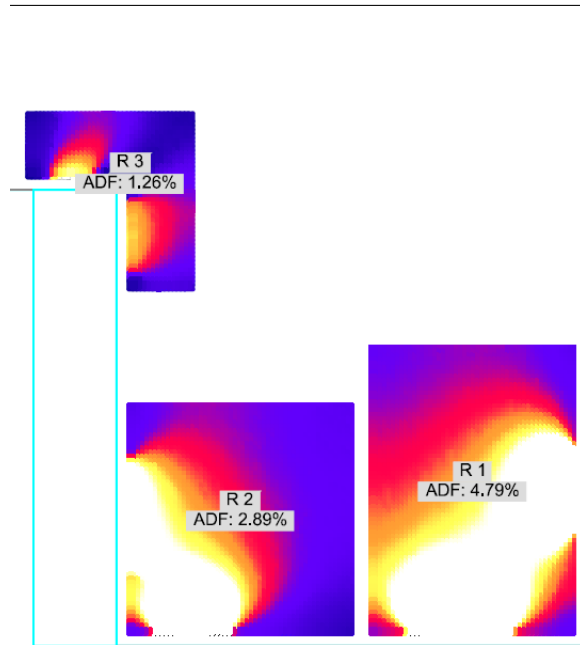
Daylight within new buildings:

- average daylight factor (ADF) – mean daylight level in the room using BS equation:

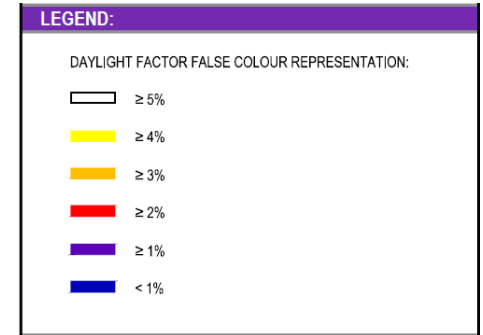
Why choose Radiance-based metrics?

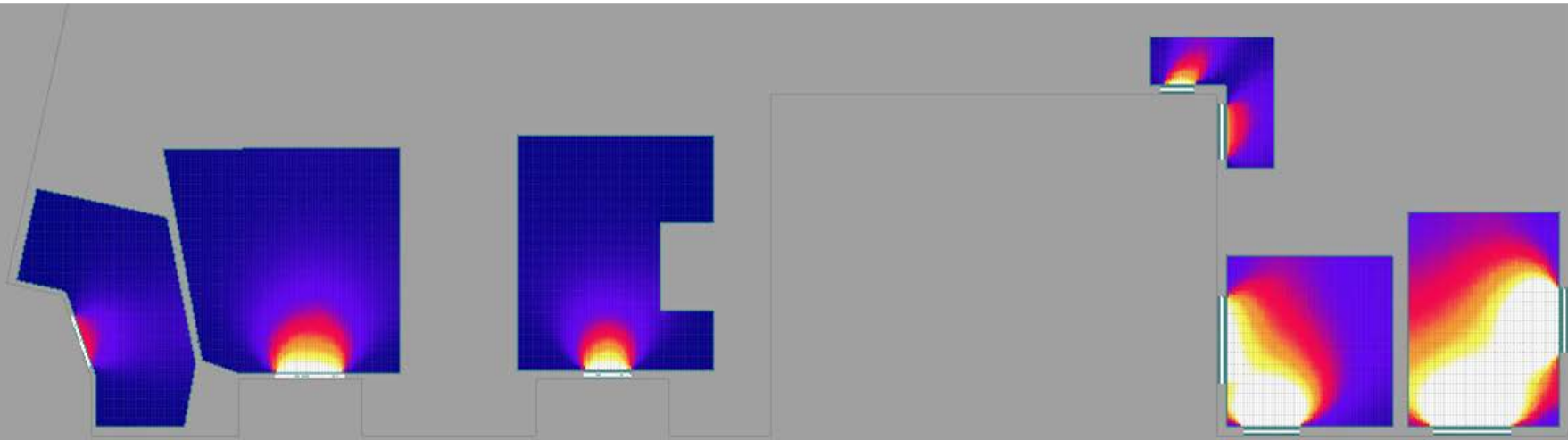


Daylight factor estimation

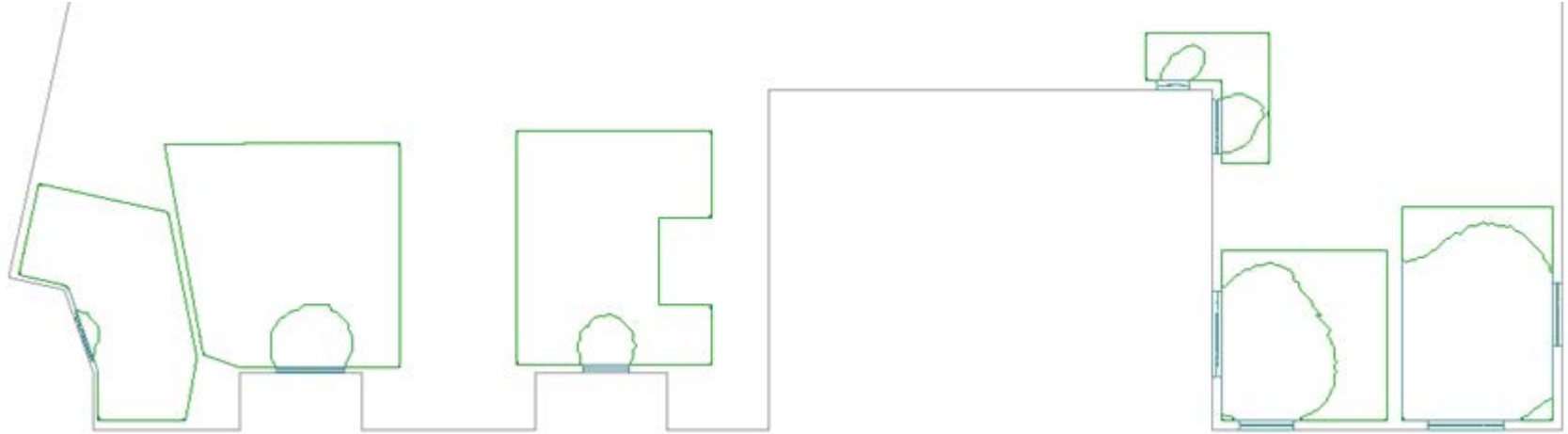


Daylight factor contour analysis





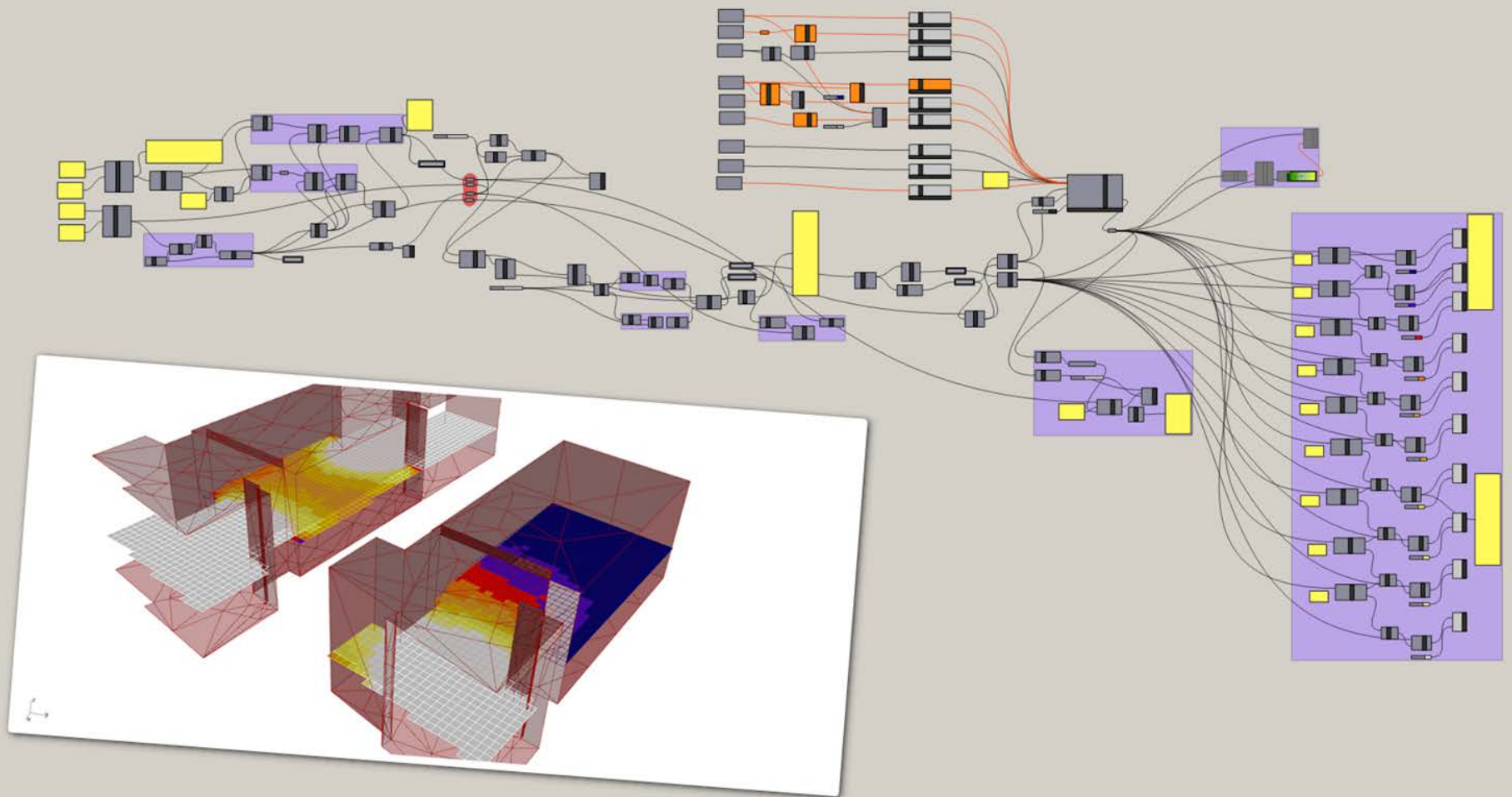
Daylight Factor



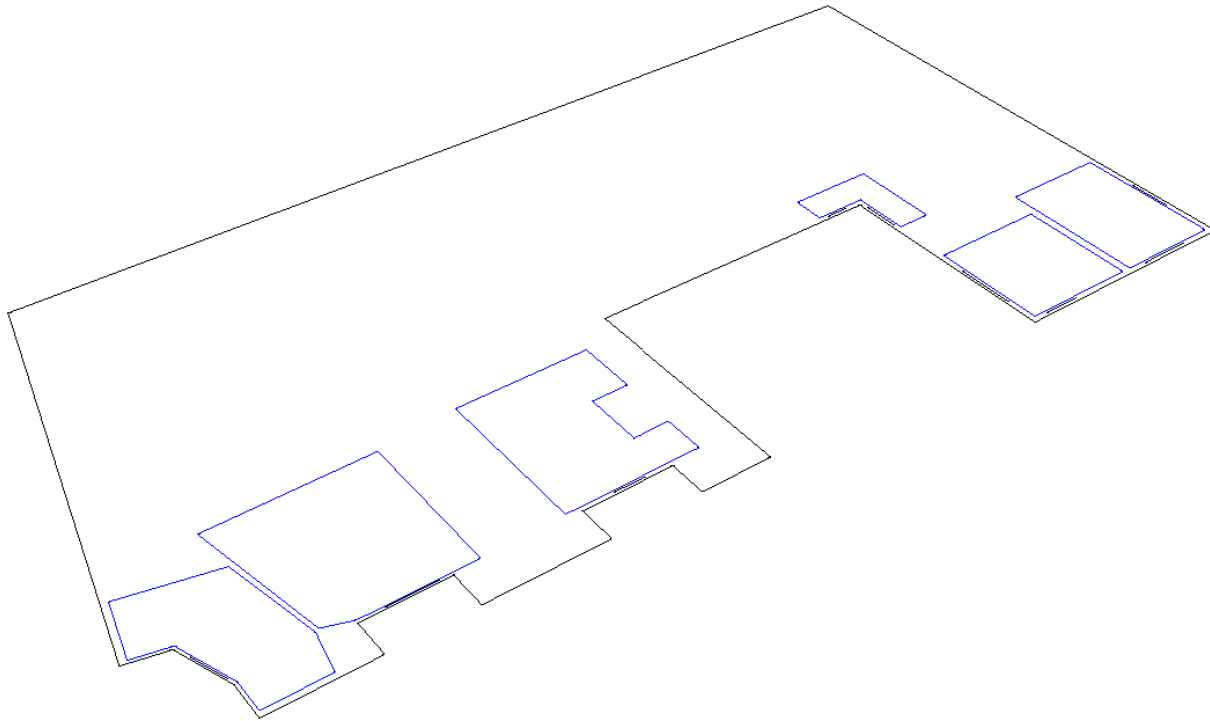
Daylight Factor

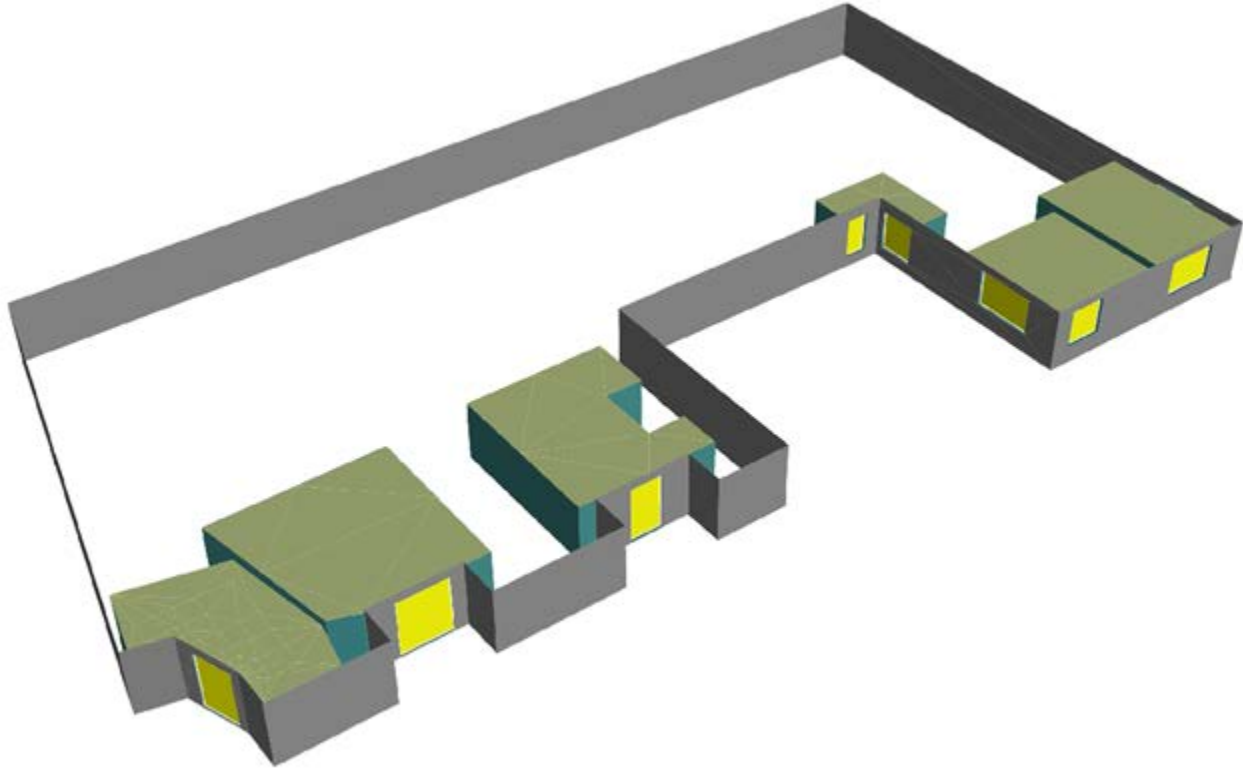
Floor	Room No.	Score	Room Area under 2% DF
First	R1	ADF: 4.79%	16.87
First	R2	ADF: 2.89%	35.68
First	R3	ADF: 1.26%	75.23
First	R4	ADF: 0.48%	86.9
First	R5	ADF: 0.66%	86.4
First	R6	ADF: 0.35%	95.82

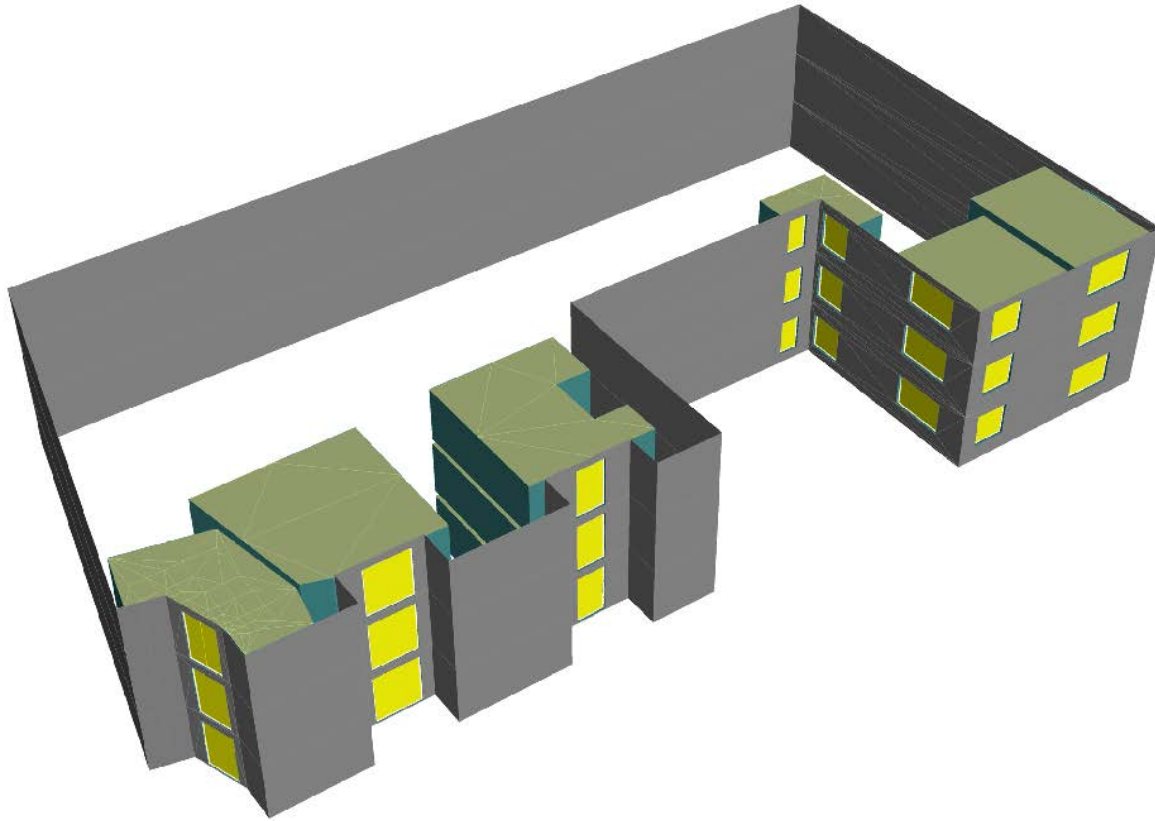
Why **we** chose
Rhino, Grasshopper & Diva



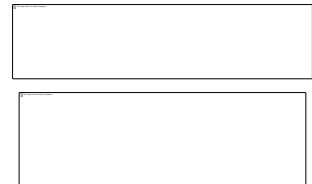
Utilise bespoke parametric modelling with grasshopper

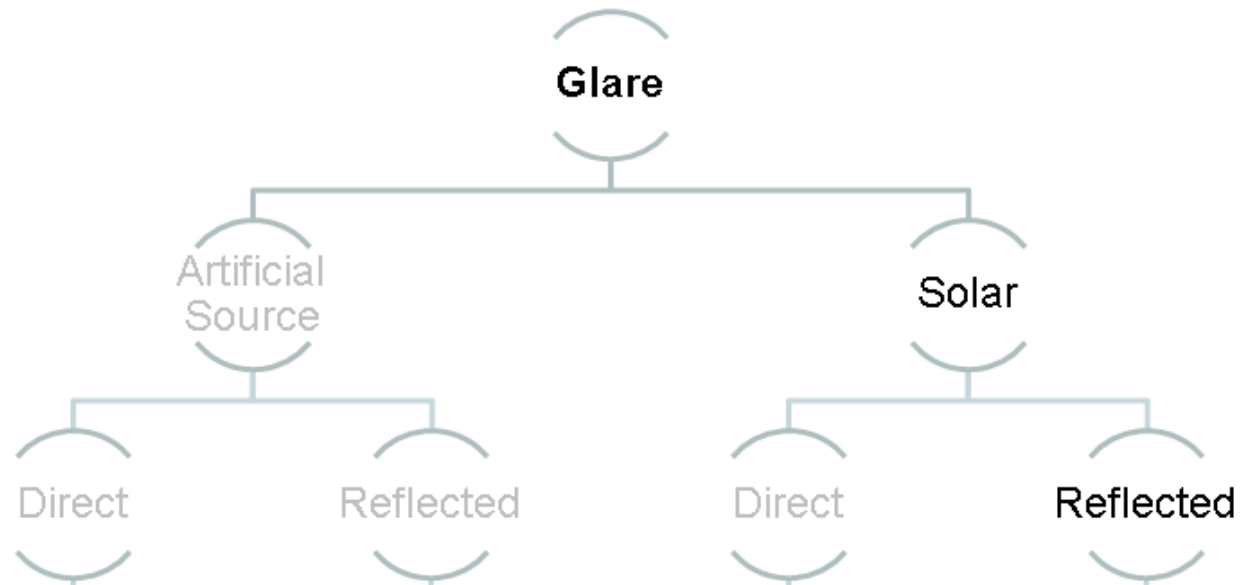


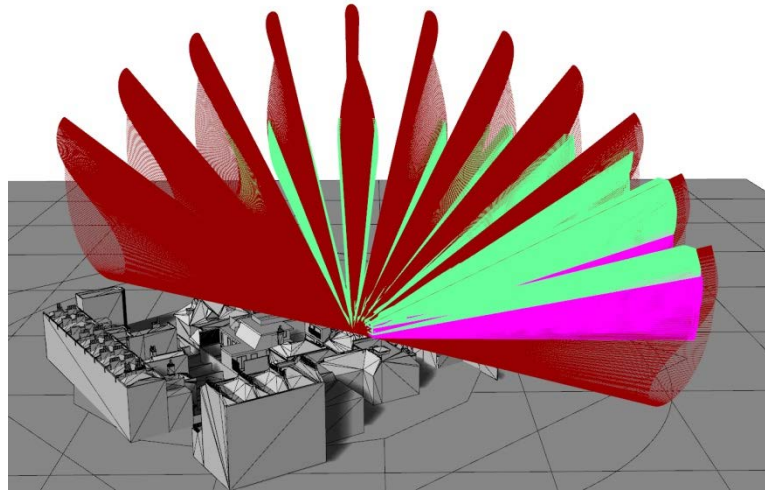
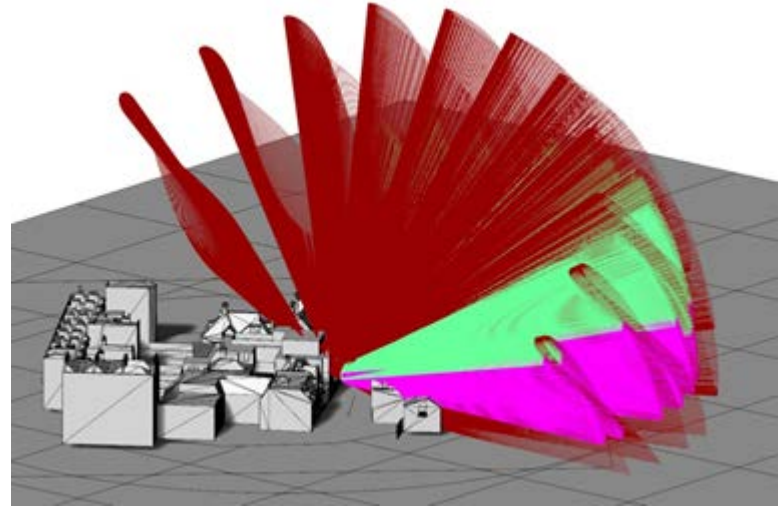
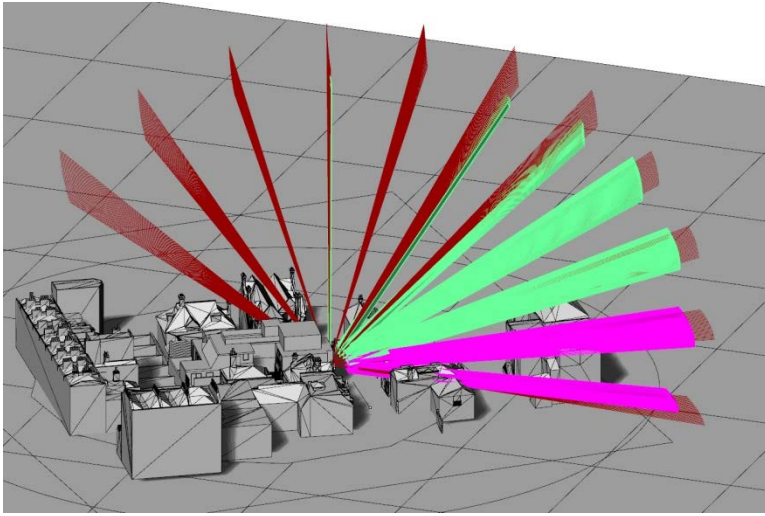




Reflected Solar Glare

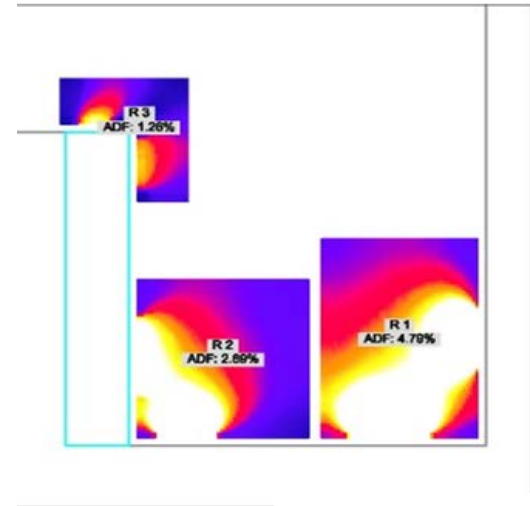
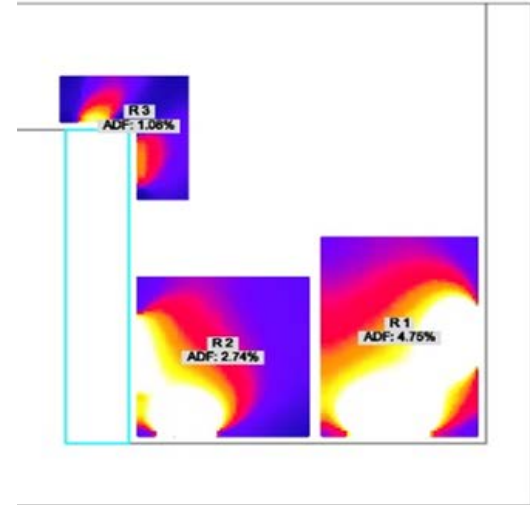






Conclusions

- Improved workflow
- An improved ability to understand daylight and sunlight



Next Steps:

Let's **work together?**

Contact us @ SimplyRhino.co.uk

Register for Grasshopper L1 or L2 or both
Private Group Classes for Practices
Project Specific Workshops
Plugin Specific Workshops
Custom Scripts for Companies

