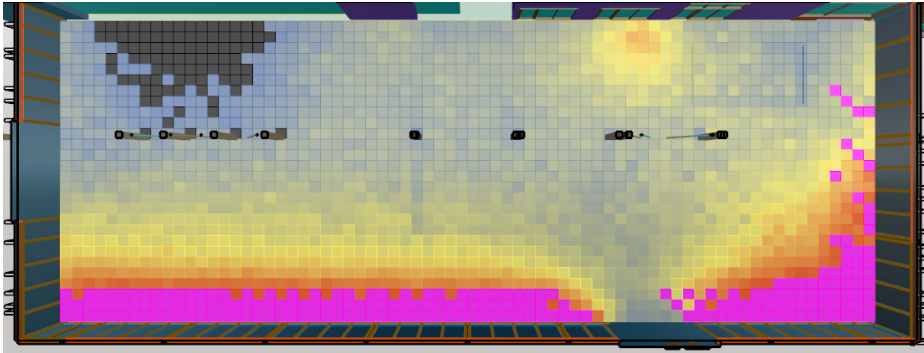


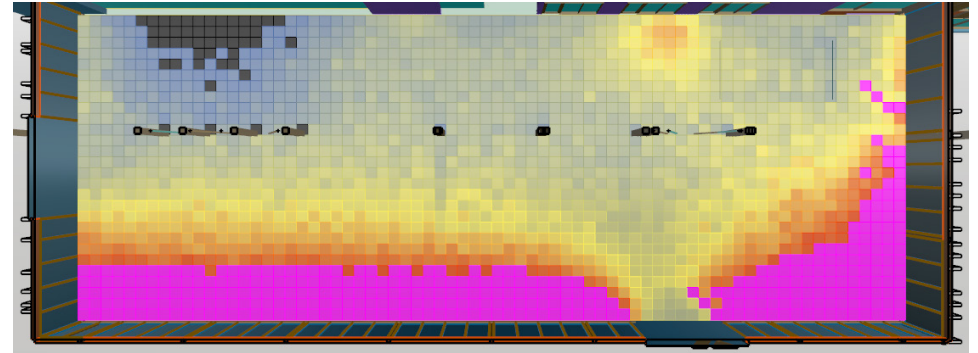
Both simulations are taken at Sept. 21, 9:00 am

Material provided by DIVA



```
# Glazing: Tau_vis = 0.70;  
# visual transmittance: 70%  
# visual transmissivity: 76.3%  
void glass Glazing_70Tvis  
0  
0  
3 0.763 0.763 0.763
```

My custom material



```
# Solarban_60_Solarblue+Clear: Tau_vis = 0.45; SHGC= 0.28 ; U-Value= 1.36W/m2K  
# visual transmittance: 45%  
# visual transmissivity: 49.07%  
void glass Solarban_60_Solarblue+Clear_45_Tvis  
0  
0  
3 0.4907 0.4907 0.4907
```