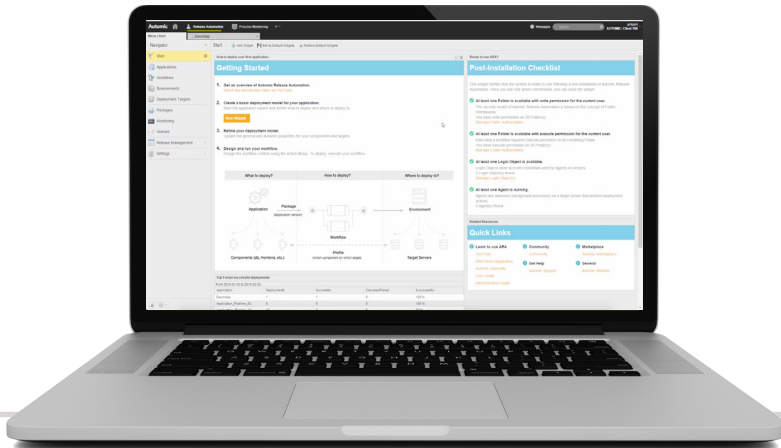


# Automatic Release Automation Continuous Delivery from Automatic



## Key Benefits

- Achieve continuous deployment and deploy as many times a day as you need: tens or even hundreds of times a day
- Zero downtime deployments that mean your business never stops, not even during a rollout
- Reduce failures by eliminating the human potential for error (like forgetting a file or missing a letter on the keyboard)
- Ensure processes and regulations are followed using built in governance and control over all software packages, environments and executing deployments
- Maintain compliance with built in reports and consolidated log archives.

Automatic Release Automation provides an integrated application packaging mechanism and a unique deployment model with a robust workflow design and execution capability. Automatic Release Automation lets users monitor and control real-time deployments and provides complete release reporting. Optimized for enterprise environments, Automatic Release Automation accelerates application deployment, assures quality releases, and minimizes downtime to help both development and operations enable business growth.

## Releases and Deployments Are Becoming Ever-More Complex

Manual and semi-manual deployments are inefficient, inconsistent and not automatically trackable. New mission-critical application releases and updates are becoming more complex with the advent of distributed architectures and agile development methodologies. Many deployments are unique with complex dependencies between applications, operating systems, configurations, and other variables that further complicate the process. Deployments also typically involve numerous manual or semi-scripted steps, which not only require extensive staff time, but increase the risk of errors. Manual and semi-manual deployment processes are slow, inefficient, inconsistent and are not automatically trackable, causing faulty releases and deployments and delays.

Yet with all this complexity, users still need to keep everything on schedule, be able to verify that deployments match expectations, and be aware of any problems that arise.

## Solution Overview

Automatic Release Automation is built on an industry leading Automation Engine that is the core of Automatic's Platform. The Automation Engine provides central user rights and access management, enterprise grade high availability and enormous scale. Automatic's Deployment Manager is the only complete deployment automation solution on the market with integrated packaging, a unique deployment model and the industry's most advanced workflow engine. Automatic's Deployment Manager includes a library of hundreds of built-in run books that are specifically designed for application releases. Automatic's Release Orchestrator is an integrated application release orchestration solution that provides advanced scheduling, planning, and approval mechanisms. Automatic's Release Orchestrator includes environment reservations and advanced reporting for release managers. Automatic Release Automation includes out-of-the-box integration with many leading application lifecycle management solutions, including: source control, binary repositories, build and continuous integration servers, framework testers, and business service management products.

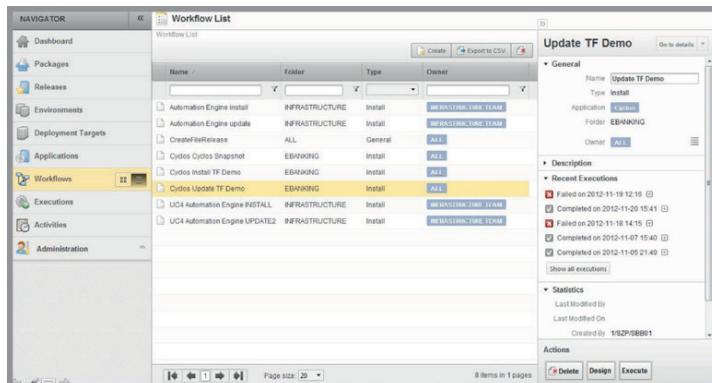
## Technical Overview

Several key capabilities make Automic Release Automation the most advanced and complete solution on the market.

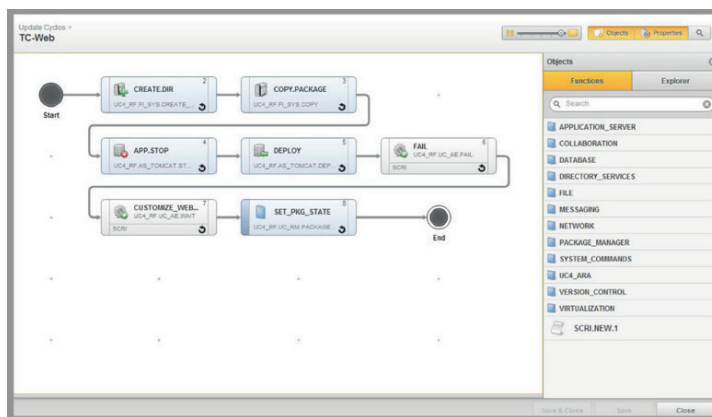
Automic's unique Packaging System lets users manually or automatically create user application artifact packages as part of the build process, which are ready to deploy as a single unit. Packages are promoted across environments and tracked by the system, so users always know which versions have been deployed and where. Automic's unique "snapshot" mechanism lets users compare configurations and file contents between packaged items and existing files. This allows users to spot any manual or automatic changes that are made to the system.

Automic's Workflow Editor is an integrated browser based canvas with drag and drop run books and flow control features. The Workflow Editor provides workflow versioning and user access management, supporting hundreds of developers in parallel with application and component-centric views. Workflows are assembled from a library of built-in run books, which replace manual deployments and scripts. The library consists of hundreds of run books, which are constantly being extended by Automic and community members. Automic's development environment includes many enhanced features such as "Global Search and Auto Completion".

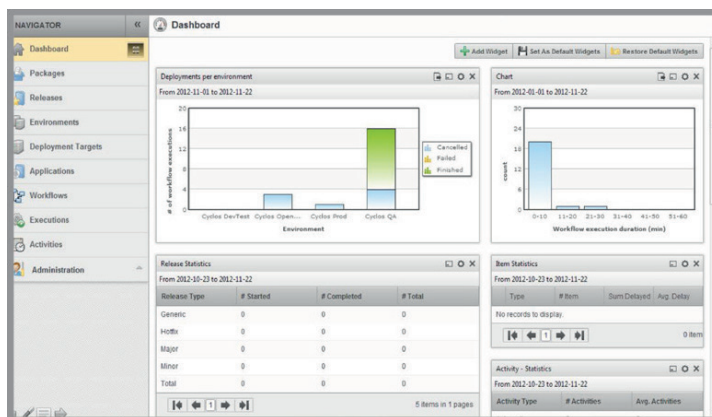
Automic Release Automation has a unique Deployment Model that is integrated into the environment and provides simplicity and consistency for creating deployment workflows. The model is based on polymorphic, inheriting and extensible properties that are manageable at every level and stage, adhering to rolebased access control. Automic deployment manager workflows automatically adapt to current model properties, which make them completely generic and easy to reuse across environments. The model is also the foundation for enabling DevOps collaboration using Automic Release Automation. For example, developers can create workflows and operations override model properties. Other unique Automic capabilities include: automatic rollback for any workflow, delta promotion, scalability, as well as many other enterprise requirements.



Automic Deployed Manager



Integrated Workflow Editor



Release and Deployment Dashboard

For more information or product demonstration please visit [www.automic.com](http://www.automic.com)