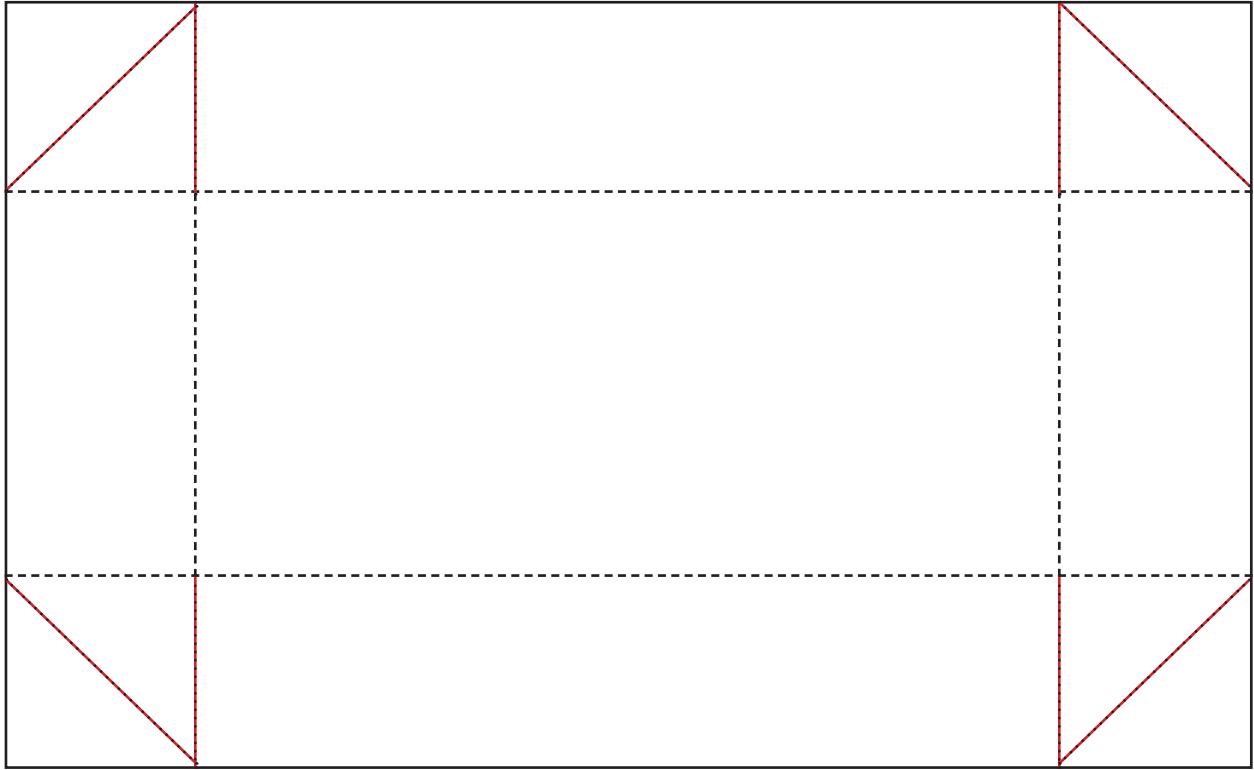


Clear Box Lid

copyright 2009 by Gina K. Designs, LLC

see complete video for assembly at www.stampstv.com



----- Fold lines

----- Cut lines

Cut on red lines, fold on dotted lines.

Tuck flaps under and adhere panels together to create a box top that fits perfectly over two large clear boxes sold at www.ginakdesigns.com

Notes: