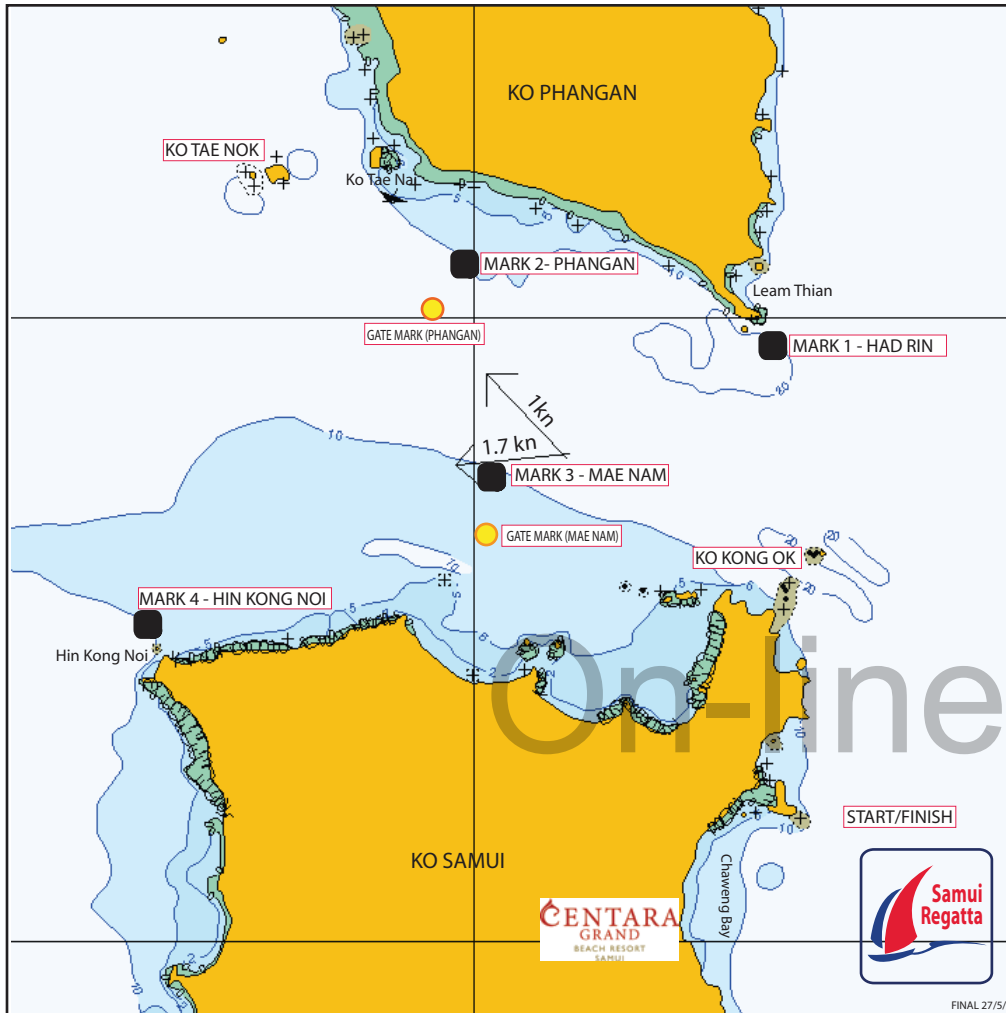






## North Courses 7,8



### Coastal Courses

#### COURSE 7

DISTANCE APPROX 16 NM

START  
PASS **KO KONG OK** TO PORT  
ROUND **MARK 3 - MAE NAM** TO PORT  
AND **PASS THROUGH GATE**  
(LEAVING MARK 3 - MAE NAM TO PORT)  
ROUND **KO KONG OK** TO STARBOARD  
FINISH

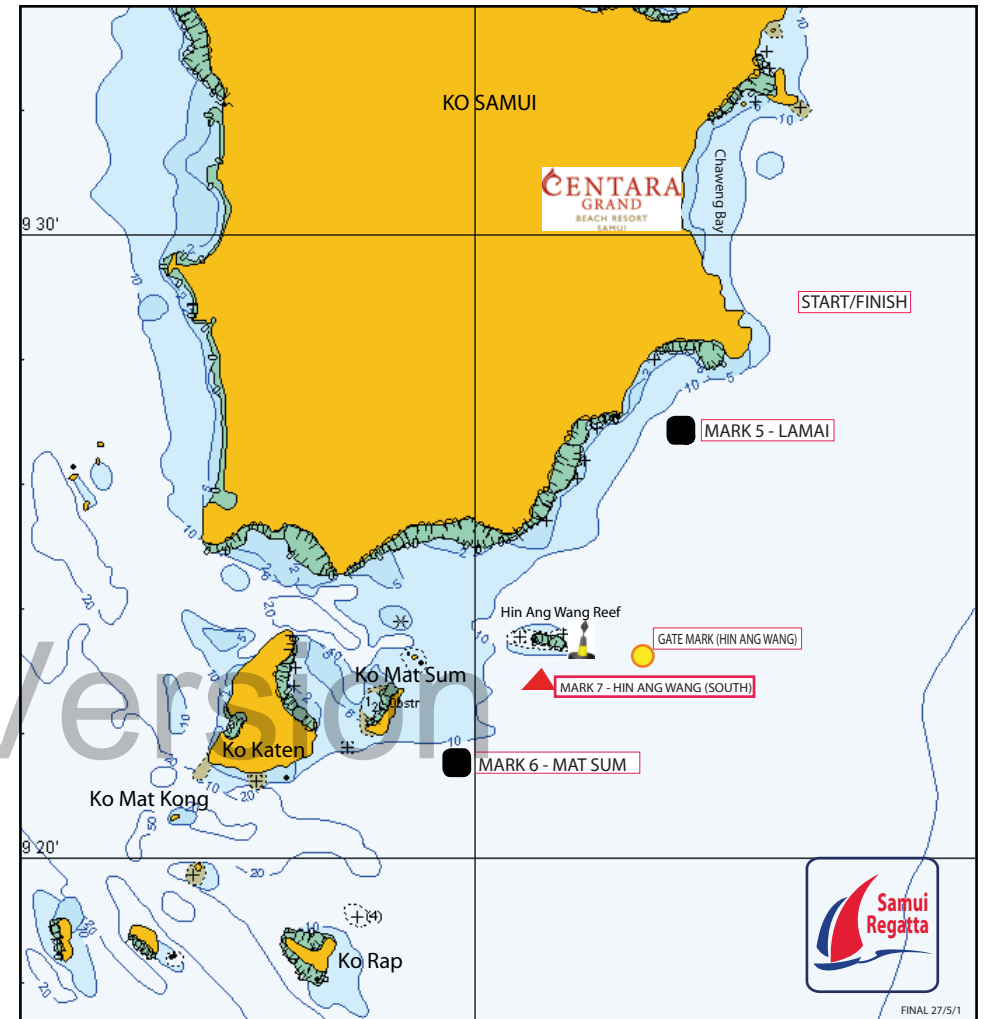
#### COURSE 8

DISTANCE APPROX 17 NM

START  
PASS **KO KONG OK** TO PORT  
ROUND **MARK 1 - HAD RIN** TO PORT  
PASS **KO KONG OK** TO STARBOARD  
FINISH

Mark positions shown in the course diagrams are for illustration only.  
If there is any discrepancy between a course diagram and the written description, then the written description shall prevail.

## South Course Mark Positions



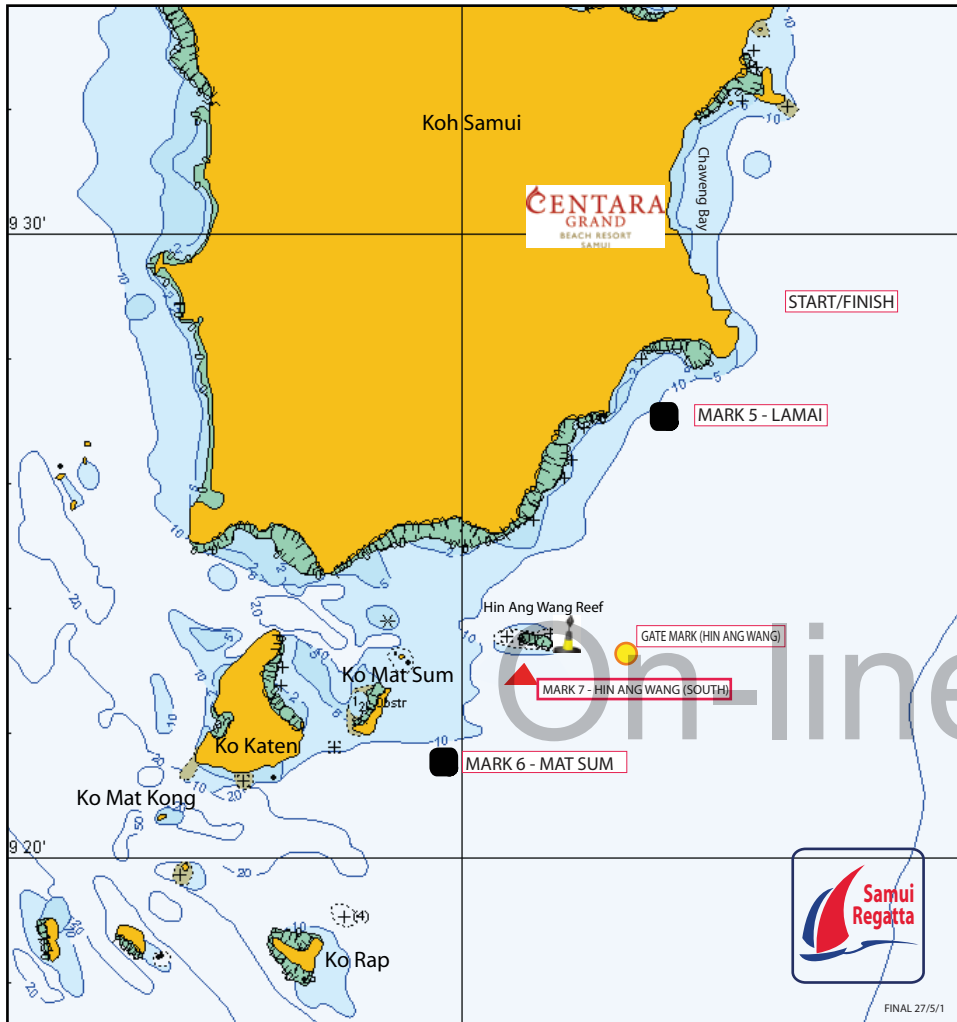
### Coastal Courses

#### Mark Positions - South

MARK 5 - LAMAI	N9° 26.68	E 100° 03.47
HIN ANG WANG REEF	REEF EXTENDS at N9° 23.57 between E 100° 00.50 and E 100° 01.80 YACHTS SHALL NOT PASS BETWEEN HIN ANG WANG REEF AND THE EAST CARDINAL MARK	
HIN ANG WANG (Cardinal Mark)	N9° 23.44	E 100° 02.18
MARK 6 - MAT SUM	N9° 21.50	E 99° 59.40
MARK 7 - HIN ANG WANG (SOUTH)	N9° 23.00	E 100° 01.20

Mark positions shown in the course diagrams are for illustration only.  
If there is any discrepancy between a course diagram and the written description, then the written description shall prevail.

South Courses 9, 10, 11



Coastal Courses

**COURSE 9**  
DISTANCE APPROX 22 NM

START  
ROUND **MARK 5 - LAMAI** TO PORT  
PASS **HIN ANG WANG REEF** TO PORT  
ROUND **MARK 6 - MAT SUM** TO PORT  
THROUGH **GATE HIN ANG WANG**  
(Gate is between yellow/black  
Cardinal Mark and Buoy)  
FINISH

**COURSE 10**  
DISTANCE APPROX 30 NM

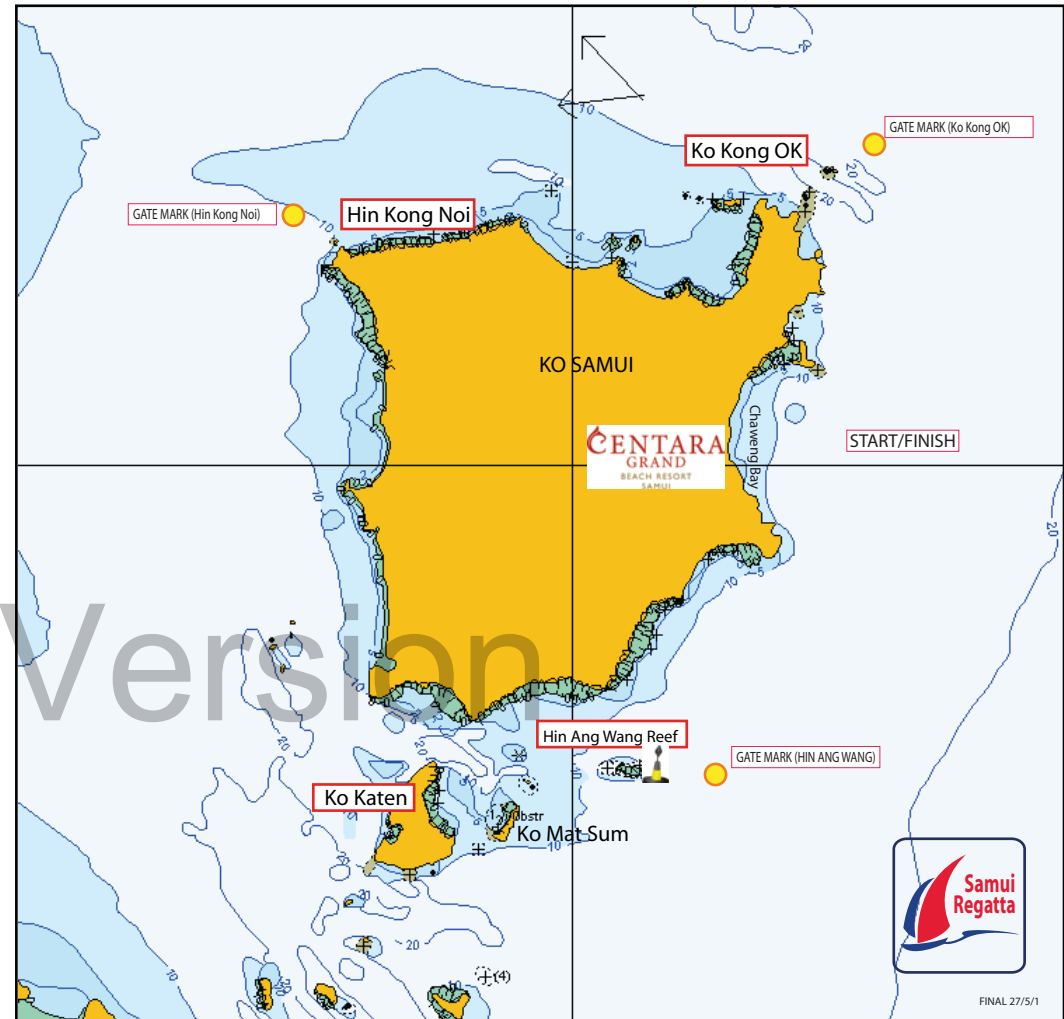
START  
ROUND **MARK 5 - LAMAI** TO PORT  
PASS **HIN ANG WANG REEF** TO PORT  
ROUND **MARK 6 - MAT SUM** TO PORT  
ROUND **KO RAP** TO PORT  
THROUGH **GATE HIN ANG WANG**  
(Gate is between yellow/black  
Cardinal Mark and Buoy)  
FINISH

**COURSE 11**  
DISTANCE APPROX 18 NM

START  
ROUND **MARK 5 - LAMAI** TO PORT  
PASS **HIN ANG WANG REEF** TO PORT  
ROUND **MARK 7 - HIN ANG WANG (SOUTH)** TO PORT  
PASS THROUGH **GATE HIN ANG WANG**  
(Gate is between yellow/black  
Cardinal Mark and Buoy)  
FINISH

Mark positions shown in the course diagrams are for illustration only.  
If there is any discrepancy between a course diagram and the written description, then the written description shall prevail.

"Round the Island" Courses 12, 12B, 14, 14B



Offshore Courses - "Around the Island"

**COURSE 12**  
DISTANCE APPROX 40 NM

START  
PASS **HIN ANG WANG REEF** TO PORT  
PASS **KO KATEN** TO PORT  
THROUGH **GATE HIN KONG NOI**  
(Gate is between **HIN KONG NOI**  
and Buoy)  
THROUGH **GATE KO KONG OK**  
(Gate is between **KO KONG OK**  
and Buoy)  
FINISH

**COURSE 12B**  
DISTANCE APPROX 40 NM

START  
PASS **KO KONG OK** TO PORT  
THROUGH **GATE HIN KONG NOI**  
(Gate is between **HIN KONG NOI**  
and Buoy)  
PASS **KO KATEN** TO STARBOARD  
THROUGH **GATE HIN ANG WANG**  
(Gate is between yellow/black  
Cardinal Mark and Buoy)  
FINISH

**COURSE 14**  
DISTANCE APPROX 48 NM

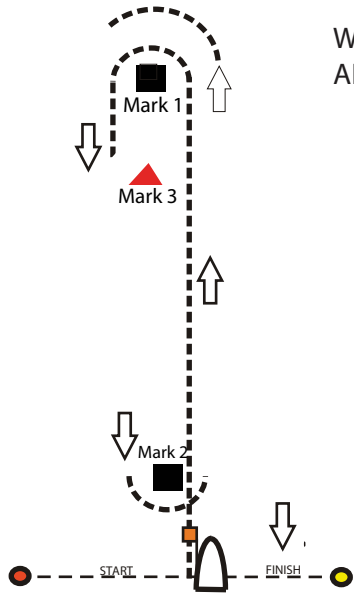
START  
THROUGH **GATE HIN ANG WANG**  
(Gate is between yellow/black  
Cardinal Mark and Buoy)  
PASS **KO KATEN** TO STARBOARD  
THROUGH **GATE HIN KONG NOI**  
(Gate is between **HIN KONG NOI**  
and Buoy)  
THROUGH **GATE KO KONG OK**  
(Gate is between **KO KONG OK**  
and Buoy)  
FINISH

**COURSE 14 B**  
DISTANCE APPROX 48 NM

START  
PASS **KO KONG OK** TO PORT  
THROUGH **GATE HIN KONG NOI**  
(Gate is between **HIN KONG NOI**  
and Buoy)  
PASS **KO KATEN** TO PORT  
THROUGH **GATE HIN ANG WANG**  
(Gate is between yellow/black  
Cardinal Mark and Buoy)  
FINISH

Mark positions shown in the course diagrams are for illustration only.  
If there is any discrepancy between a course diagram and the written description, then the written description shall prevail.

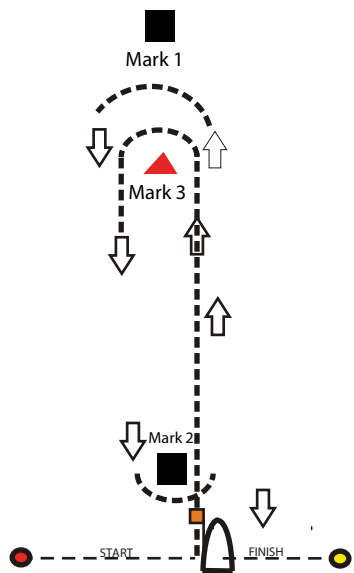
Windward/Leeward Courses  
ALL MARK ROUNDINGS TO PORT



**COURSE 15**  
START - 1 - Finish

**COURSE 16**  
START - 1 - 2 - 1 - FINISH

**COURSE 17**  
START - 1 - 2 - 1 - 2 - 1 - FINISH

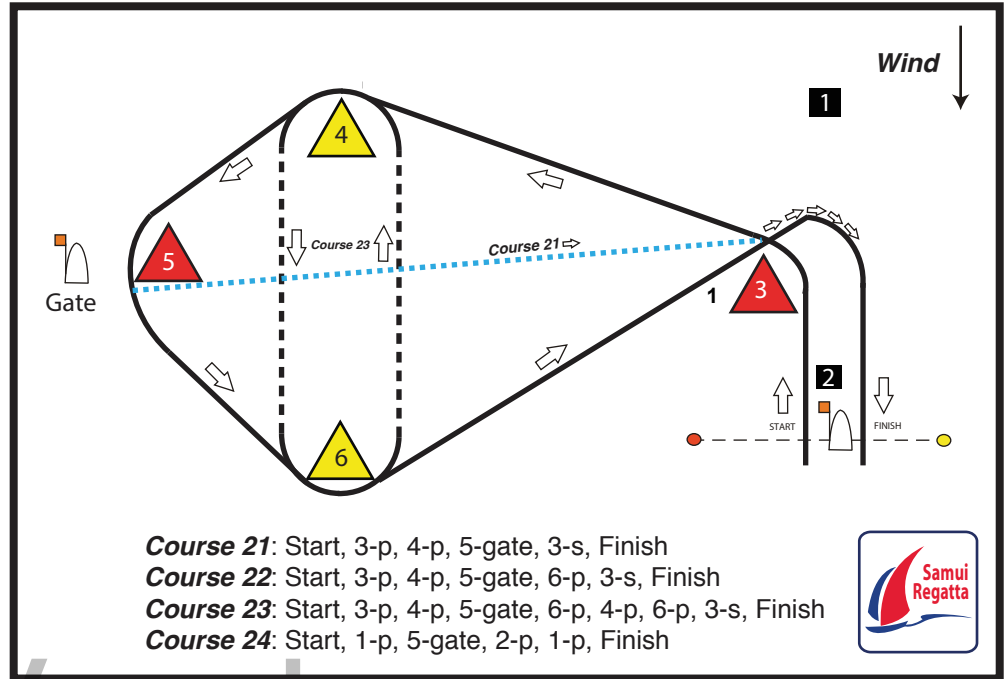


**COURSE 18**  
START - 3 - Finish

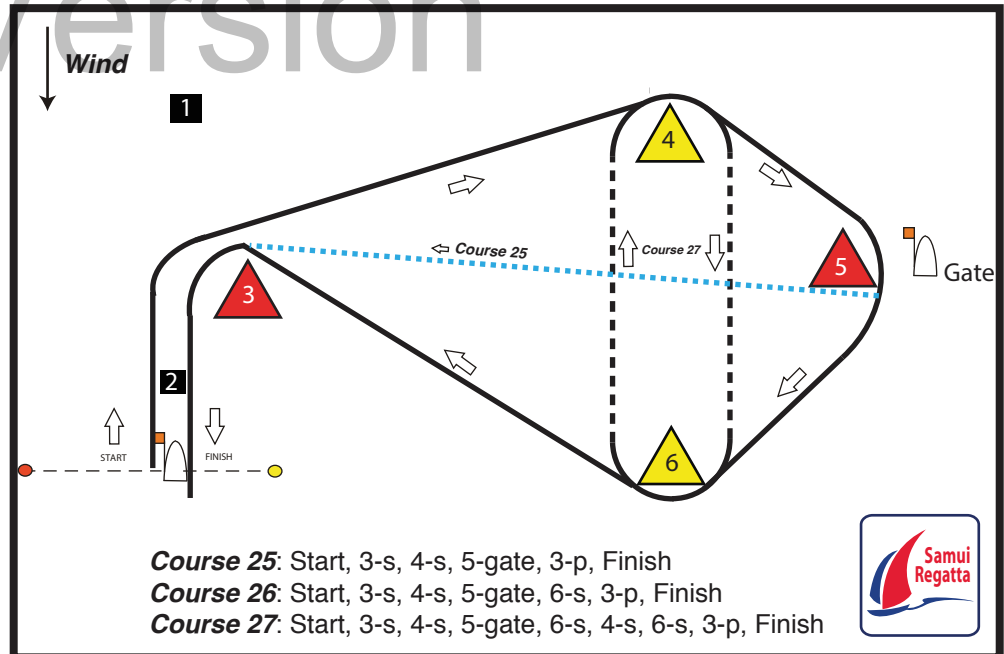
**COURSE 19**  
START - 3 - 2 - 3 - FINISH

**COURSE 20**  
START - 3 - 2 - 3 - 2 - 3 - FINISH

Mark positions shown in the course diagrams are for illustration only.  
If there is any discrepancy between a course diagram and the written description, then the written description shall prevail.



**Course 21:** Start, 3-p, 4-p, 5-gate, 3-s, Finish  
**Course 22:** Start, 3-p, 4-p, 5-gate, 6-p, 3-s, Finish  
**Course 23:** Start, 3-p, 4-p, 5-gate, 6-p, 4-p, 6-p, 3-s, Finish  
**Course 24:** Start, 1-p, 5-gate, 2-p, 1-p, Finish



**Course 25:** Start, 3-s, 4-s, 5-gate, 3-p, Finish  
**Course 26:** Start, 3-s, 4-s, 5-gate, 6-s, 3-p, Finish  
**Course 27:** Start, 3-s, 4-s, 5-gate, 6-s, 4-s, 6-s, 3-p, Finish

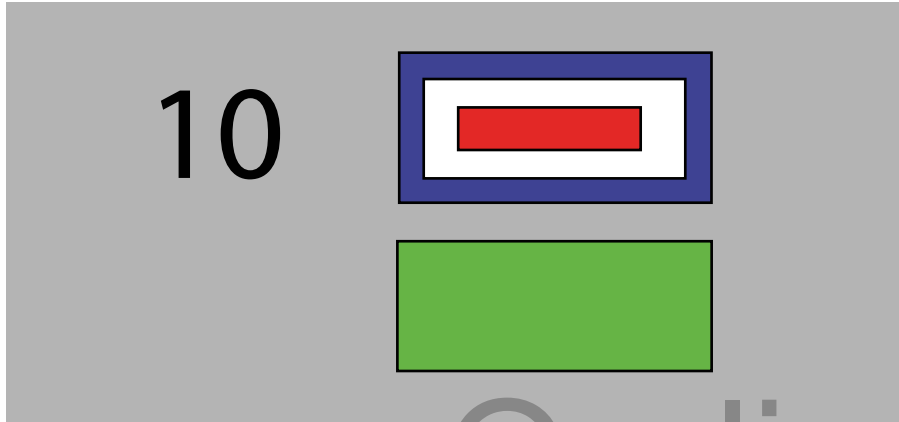


Mark positions shown in the course diagrams are for illustration only.  
If there is any discrepancy between a course diagram and the written description, then the written description shall prevail.



**Adding a windward mark**

If Flag W is displayed with the course number board,  
A new first mark will be added to the course.  
This will be a mark to windward of the starting line.

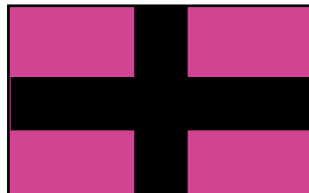


The Rounding direction is indicated by the Coloured Board displayed below the W.  
If a RED flag is displayed below flag W, then the mark is rounded to PORT  
If a GREEN flag is displayed below flag W, then the mark is rounded to STARBOARD

The second mark of the course will be the first mark in the course description.  
If a W flag is not flown, the first mark of the course will be the one listed in the course description.  
This section does not apply to windward/leeward courses.  
Those courses will be sailed as described in the Course Descriptions.

**Return to Finish**

A committee boat at a mark displaying a Black Cross on a Pink Background means complete the rounding or passing of the mark and the race direct to the finish line.



พฤษภาคม MAY				มิถุนายน JUNE			
เวลา TIME	สูง (ม.) HT (M)	เวลา TIME	สูง (ม.) HT (M)	เวลา TIME	สูง (ม.) HT (M)	เวลา TIME	สูง (ม.) HT (M)
1 WE 0224 1207	2.52 1.23	16 TH 0217 1046	2.30 1.23	1 SA 0322 1108	2.13 1.17	16 SU 0246 1048	2.03 1.13
2 TH 0305 1258	2.43 1.27	17 FR 0244 1115	2.24 1.24	2 SU 0349 1130 1905 2311	1.95 1.16 1.71 1.63	17 MO 0306 1058	1.90 1.15
3 FR 0344 1313	2.31 1.31	18 SA 0307 1146	2.15 1.26	3 MO 0409 1156 1956	1.76 1.17 1.86	18 TU 0320 1107 1910	1.74 1.16 1.73
4 SA 0424 1255	2.16 1.33	19 SU 0332 1218	2.05 1.28	4 TU 1216 2042	1.18 2.00	19 WE 1124 1956	1.17 1.88
5 SU 0510 1317 2045	1.98 1.33 1.76	20 MO 0400 1245	1.91 1.30	5 WE 1233 2123	1.19 2.11	20 TH 1137 2046	1.16 2.03
6 MO 0105 0618 1348 2119	1.70 1.81 1.33 1.93	21 TU 0425 1304 2116	1.74 1.32 1.86	6 TH 1255 2200	1.20 2.19	21 FR 1132 2137	1.12 2.18
7 TU 0405 0805 1416 2153	1.60 1.66 1.33 2.08	22 WE 1321 2132	1.33 2.02	7 FR 0715 2237	1.13 2.25	22 SA 0757 2228	1.02 2.30
8 WE 0558 0943 1438 2225	1.45 1.56 1.34 2.20	23 TH 0610 0923 1339 2201	1.38 1.44 1.32 2.18	8 SA 0752 2314	1.07 2.28	23 SU 0836 2316	0.94 2.38
9 TH 0647 1049 1455 2257	1.33 1.49 1.35 2.29	24 FR 0652 1049 1358 2240	1.24 1.35 1.28 2.32	9 SU 0829 2350	1.05 2.29	24 MO 0918	0.90
10 FR 0729 1144 1515 2330	1.24 1.44 1.35 2.35	25 SA 0740 2322	1.13 2.43	10 MO 0901	1.05	25 TU 0003 0950	2.42 0.91
11 SA 0805 1231 1539	1.19 1.39 1.34	26 SU 0832	1.06	11 TU 0027 0928	2.29 1.06	26 WE 0048 1012	2.41 0.95
12 SU 0004 0839	2.38 1.18	27 MO 0006 0928	2.50 1.03	12 WE 0101 0951	2.28 1.08	27 TH 0130 1026 1512 1746	2.35 1.00 1.23 1.17
13 MO 0039 0913	2.38 1.18	28 TU 0051 1020	2.52 1.03	13 TH 0132 1006	2.25 1.09	28 FR 0205 1015 1552 1856	2.24 1.05 1.36 1.27
14 TU 0114 0945	2.37 1.19	29 WE 0134 1102	2.49 1.06	14 FR 0201 1016	2.20 1.11	29 SA 0236 1003 1635 2008	2.09 1.05 1.51 1.38
15 WE 0147 1017	2.35 1.21	30 TH 0214 1127	2.41 1.12	15 SA 0225 1031	2.12 1.12	30 SU 0301 1017 1722 2152	1.91 1.04 1.65 1.48
		31 FR 0250 1107	2.29 1.16				

HEIGHTS OF WATER PREDICTED IN METERS ABOVE THE LOWEST LOW WATER



See you next year.....  
24<sup>th</sup> - 31<sup>th</sup> May 2014