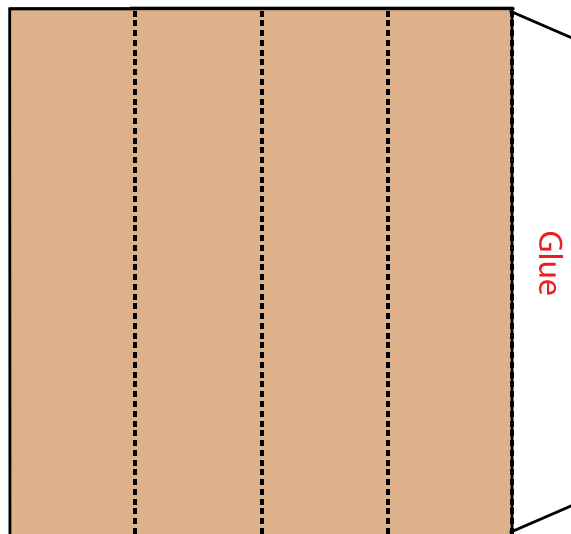
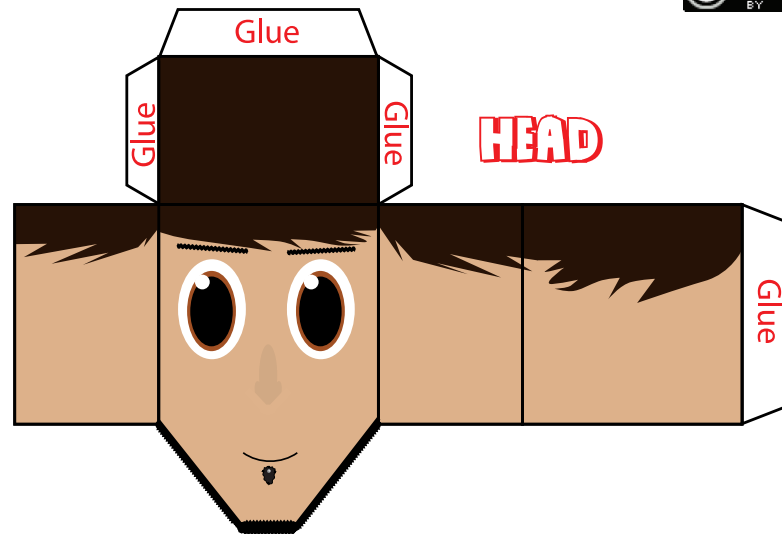


INSTRUCTIONS

1. Cut out all pieces
2. **HEAD:** Fold along black lines. Fold down glue tabs and glue to the inside of the head creating a box-like shape with an open bottom.
3. **NECK:** Fold along dotted lines. Fold glue tab over and glue inside to create a rectangle shape.
4. **BODY:** Cut slots for arms. Fold along dotted lines. Fold glue tab and glue inside body.



NECK

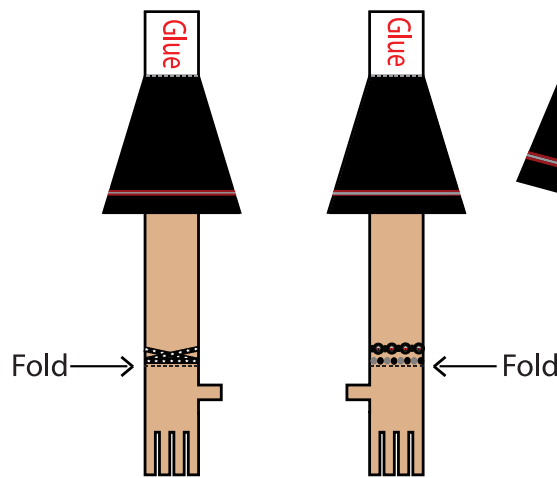


HEAD

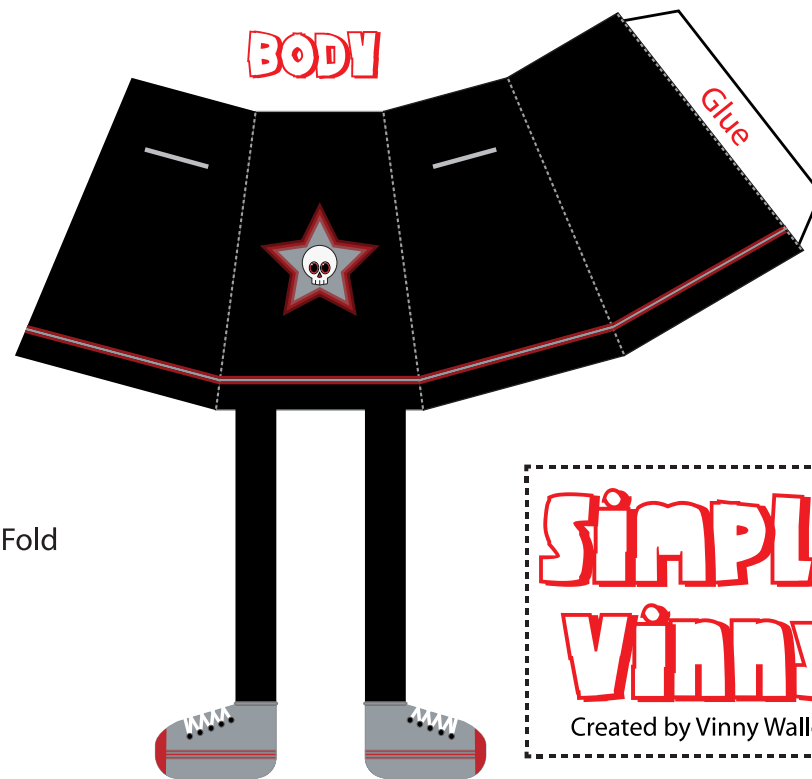
5. **ARMS:** Fold glue tabs and dotted lines on each arm just below the bracelets. Cut out fingers if you wish.

Now that you have everything cut out and prepared it's time to assemble your **Simple Vinny**.

6. Insert arms into slots on body. Push glue tab up and glue in place.
7. Push neck up through hole in body till it's level with the bottom (or just sit it on a hard surface and push down. No need to glue it unless you really want to).
8. Place head on top of neck. You don't need to glue the head to the neck either (I told you it was simple).



ARMS



BODY

Viola! You now have a **Simple Vinny** of your own.

10. Take a picture of him in his new home or having an adventure and email to ifoundvinny@gmail.com

Don't forget to keep on eye on for all the other customs of **Simple Vinny** that you can download and make. Collect them all!

SIMPLE VINNY

Created by Vinny Walleen

Simple Skull Edition 

<http://ifoundvinny.blogspot.com/>