



## Gulf Coastal Plains & Ozarks Landscape Conservation Cooperative

The mission of the GCPO LCC is to create a shared vision for sustainable natural and cultural resources in the face of a changing climate and other threats, and to foster the implementation of that vision with evaluation and refinement over time.

### How we work

- The GCPO LCC adds value to existing conservation initiatives and partnerships by boosting coordination, lending expertise or providing resources with the goal of achieving a landscape scale conservation perspective and results.
- The GCPO LCC builds upon existing efforts and avoids duplication of effort.
- The GCPO LCC recognizes jurisdictional authorities and respects private property rights by focusing on collaborative, voluntary or incentive-based action.

### How the GCPO LCC Creates a Shared Vision

- Leads and supports science aimed at understanding and preparing for the short and long-term impacts of climate change, urbanization, and other threats with the goal of promoting resilience in natural and human communities
- Leads and assists efforts to identify areas important to sustain fish and wildlife, the landscape systems that they depend on, and the ecosystem services that support people's quality of life
- Synthesizes scientific information working with conservation, land management and private interests to provide guidelines for habitat restoration and management that promote long-term sustainability

•**Key project:** With considerable expertise from the MSU Geosystems Research Institute, and funding from the GCPO LCC, the GCPO LCC Geomatics Working Group is developing a seamless, consistent land cover database for the entire Southeast, based on the best aspects of four standards currently in place. The database will be accessible online via the [Conservation Planning Atlas](#), another GCPO LCC project, which allows end-users to easily discover, access, and integrate land use and other data and tools.

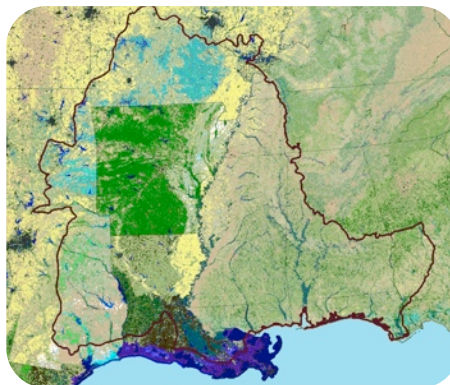
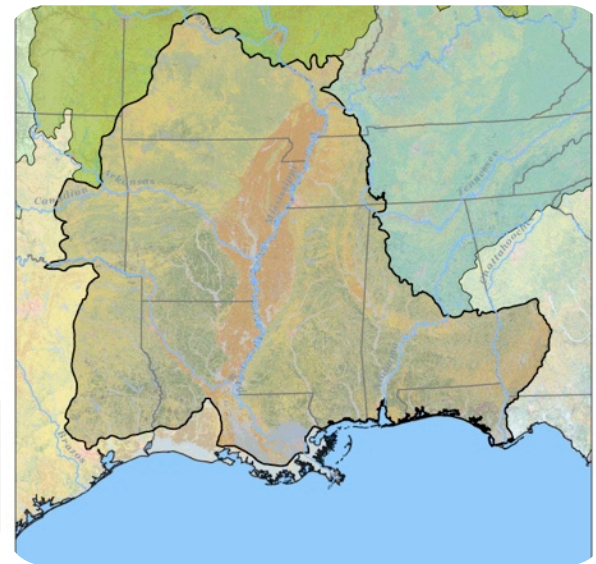


Figure above illustrates the problem in having inconsistent land cover data.



### Steering Committee

Alabama Department of Conservation and Natural Resources  
American Bird Conservancy  
Arkansas Game and Fish Commission  
Auburn University  
Department of Defense - Army Corps of Engineers  
Ducks Unlimited  
Florida Fish and Wildlife Conservation Commission  
Kentucky Department of Fish and Wildlife Resources  
Louisiana Department of Wildlife and Fisheries  
Mississippi Department of Wildlife, Fisheries, and Parks  
Mississippi State University  
Missouri Department of Conservation  
National Bobwhite Conservation Initiative  
National Oceanic & Atmospheric Administration  
National Park Service  
Oklahoma Department of Wildlife Conservation  
Tennessee Wildlife Resources Agency  
Texas Parks and Wildlife Department  
The Conservation Fund  
The Nature Conservancy  
U.S. Army Corps of Engineers  
U.S. Fish and Wildlife Service  
U.S. Geological Survey  
USDA Forest Service

# GULF COASTAL PLAINS & OZARKS LCC

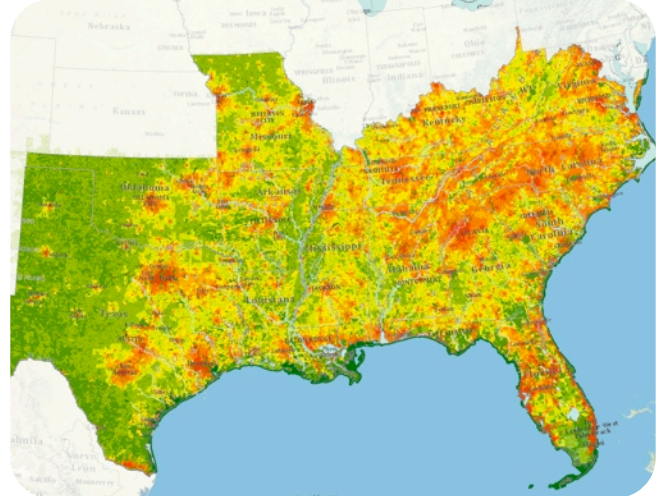
## How the GCPO LCC Helps to Implement the Shared Vision

- Provides a forum and/or resources to facilitate the integration of conservation initiatives and partners into an ecological whole
- Collaboratively develops science-based tools for land and fishery managers and urban planners

**Key project:** Working collaboratively with the Southeastern Association of Fish & Wildlife Agencies, the federal Southeast Natural Resources Leadership Group and five additional LCCs covering the Southeastern U.S., the GCPO LCC is facilitating and the Southeast Climate Science Center is providing scientific support for development of a [Southeast Conservation Adaptation Strategy](#) (SECAS). The goal of the Strategy is to bring the conservation community together to develop the vision and the approaches needed to sustain fish and wildlife populations at desired levels across the Southeast.

Figure at right shows a housing density projection for the Southeast to the year 2030/USFWS.

Figure below shows the location of I&M bat monitoring sites at 35 National Wildlife Refuges and three FWS Ecological Services offices/GCPO LCC.



## How the GCPO LCC Fosters Evaluation and Refinement of the Vision and its Implementation

- Applies technologies to create cutting-edge tools and applications for field staff, improving the ability to collect, store, and analyze information cost-effectively

**Key project:** The GCPO LCC is working with National Wildlife Refuges across the Southeast, the USFWS Inventory & Monitoring Program, the South Atlantic LCC, and bat expert Dr. Eric Britzke of the US Army Engineer Research and Development Center to coordinate acquisition and distribution of acoustic bat monitoring equipment, training and data. The MSU Geosystems Research Institute is hosting two I&M positions at its facility in Starkville, MS. After training in spring 2012, 32 biologists began collecting data on 20 bat species, essential pollinators that are threatened by White Nose Syndrome.



- Join the web community at [gcpolcc.org](http://gcpolcc.org).
- Contact the staff or your Steering Committee representative.

### Partnership Advisory Council

Black Bear Conservation Coalition  
Central Hardwoods Joint Venture  
East Gulf Coastal Plain Joint Venture  
Gulf Coast Joint Venture  
Gulf of Mexico Alliance  
Lower Mississippi River Conservation Committee  
Lower Mississippi Valley Joint Venture  
Southeast Aquatic Resources Partnership  
Southeastern Bat Diversity Network  
Southeast Partners in Amphibian & Reptile Conservation

### Conservation Science Staff

**Greg Wathen**, Coordinator - TWRA; [greg.wathen@tn.gov](mailto:greg.wathen@tn.gov)  
**Dr. John Tirpak**, Science Coordinator - USFWS; [john\\_tirpak@fws.gov](mailto:john_tirpak@fws.gov)  
**Dr. Mike Osland**, Research Ecologist - USGS; [oslandm@usgs.gov](mailto:oslandm@usgs.gov)  
**Karen Gregg Elliott**, Communications & Outreach Specialist - [K Gregg Consulting](#); [elliott.gregg@gmail.com](mailto:elliott.gregg@gmail.com)  
**Laurie Rounds**, Gulf Coast Landscape Conservation Liaison - NOAA; [Laurie.Rounds@noaa.gov](mailto:Laurie.Rounds@noaa.gov)  
**Janet Ertel**, Lead Inventory & Monitoring Biologist for the GCPO LCC and Region-wide - Deputy Branch Chief, I&M - US FWS; [janet\\_ertel@fws.gov](mailto:janet_ertel@fws.gov)  
**Taylor Hannah**, [SCEP](#) Student - MSU; [thannah@cfr.msstate.edu](mailto:thannah@cfr.msstate.edu)  
**Glenn Constant**, Aquatic Resource Specialist - USFWS; [Glenn\\_Constant@fws.gov](mailto:Glenn_Constant@fws.gov)  
**H. Alexis Londo, Ph.D.**, Geomatics Coordinator - MSU; [alondo@gri.msstate.edu](mailto:alondo@gri.msstate.edu)  
**Chad Fanguy**, Research Associate - Univ of LA; [cfanguy@usgs.gov](mailto:cfanguy@usgs.gov)  
**Jeff Gleason**, Science Liaison - USFWS AL ESFO; [Jeffrey\\_Gleason@fws.gov](mailto:Jeffrey_Gleason@fws.gov)  
**Yvonne Allen**, Aquatic Habitat Analyst - USFWS; [yvonne\\_allen@fws.gov](mailto:yvonne_allen@fws.gov)