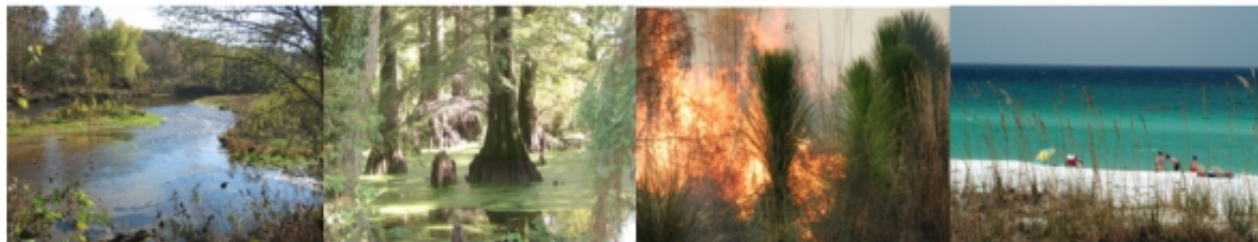




# Gulf Coastal Plains & Ozarks Landscape Conservation Cooperative

Newsletter, The Monitor



[Follow on Twitter](#)

[Forward to a Friend](#)



## Headlines at a Glance:

### Highlight:

[A National Habitat System for Wildlife Conservation](#)

### Greg Wathen's blogs

[South Central Climate Science Center - Science Workshop, November 2012](#)

### John Tirpak's blogs

[Adaptation Science Management Team: Updates and Next Steps](#)

### Staff Highlight

[NWRS hires new Inventory & Monitoring Coastal Ecologist - Meg Goecker](#)

[NWRS announces Lee Holt as new Aquatic Ecologist for the Gulf Inventory and](#)

## The Wide Angle View

*News from Greg Wathen, LCC Coordinator*

**South Central Climate Science Center Science Workshop - Nov 2012**



I attended the [South Central Climate Science Center](#) (SC CSC) Science Workshop in Ft. Worth, TX, November 29-30, and greatly enjoyed the opportunity to meet and interact with a great variety of scientists working within that consortium. The purpose of the meeting was to identify near and long term, high priority research topics for the SC CSC. If you're not familiar with the SC CSC, it's one of 3 regional CSCs that overlap the GCPO geography, the other 2 being the Southeast and Northeast CSCs. The SC CSC is made up of a consortium of universities and partners, and is hosted by University of Oklahoma in Norman, OK. The other universities and partners in the consortium include Louisiana State University, Texas Tech University, Oklahoma State University, Chickasaw Nation, The Choctaw Nation of Oklahoma, and NOAA's Geophysical Fluid Dynamics Laboratory. The SC CSC just hired a permanent director, Dr. Kim Winton, in August of this year (here's a [news release](#) announcing Dr. Winton's appointment). Dr. Winton came over to the SC CSC from the USGS Oklahoma Water Science Center, and possesses a wealth of experience and knowledge in

## [Monitoring Network](#)



### ***Gulf of Mexico news***

[The Gulf Coast Vulnerability Assessment \(GCVA\) has launched!](#)

[Gulf Coast Vulnerability Assessment Work Plan For Comments](#)

[GCVA Fact Sheet](#)

[GCVA Work Plan](#)

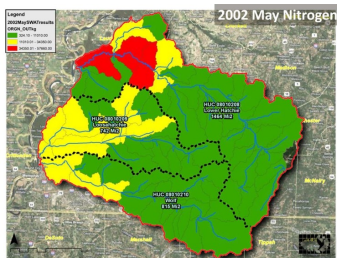
[Webinar signup: Decision Support Tools for Climate Change Adaptation Planning for 4 Gulf Coast LCCs](#)

[Global Sea Level Rise Scenarios for the United States National Climate Assessment](#)

[Gulf Coast Ecosystem Restoration Council Announces First Public Meeting](#)

[Tribes & Climate Changes website, and a story of SLR along the Gulf Coast](#)

### ***From Around the GCPO:***



***Project Highlight:***  
[Water Quality Trading Feasibility in West Tennessee](#)

[View or download the EPA-TNC Water Quality Trading](#)

water and agricultural issues. She will be a great asset to the SC CSC, and I really look forward to working with her on important landscape scale conservation issues in our region.

A couple of things stood out for me from the meeting...

[Read more](#)

---

## **From Under the Scope**

### ***The View from John Tirpak, the LCC Science Coordinator***

#### **Adaptation Science Management Team: Updates and Next Steps**

The Conservation Science Staff of the GCPO LCC hosted a webinar for the Adaptation Science Management Team in late November to provide an update on the Steering Committee response to the preliminary recommendations of the ASMT, share reactions to the ASMT's "species endpoint" approach from the FWS Surrogate Species Workshops, identify a timeline and next steps for the achievement of the ASMT's conservation framework, and explore options for strengthening the ASMT communications with the broader GCPO community.

Highlights from the webinar include . . .

[Read more](#) or [View webex recording](#)

---

## **Gulf of Mexico News**

### **The Gulf Coast Vulnerability Assessment Has Launched!**

On October 29th, an orientation Webex was held for the newly formed Gulf Coast Vulnerability Assessment (GCVA) project teams. The GCVA is a collaborative project led by the four Gulf LCCs and Climate Science Centers, NOAA, and the Gulf of Mexico Alliance. Its goal is to enhance conservation and restoration planning by providing an understanding of the effects of sea level rise and climate change on Gulf of Mexico coastal

[Report](#)

[Geomatics Projects within the LCC - Update](#)

[New content to bring you up to speed on Southern Pine Desired Forest Conditions Working Group progress](#)

[Proceedings of the 4th Fire in Eastern Oak Conference Now Available!](#)

[Vulnerability Assessment for the Central Hardwoods region](#) in Illinois, Indiana, and Missouri - including the Ozarks. To participate, contact [Leslie Brandt](#)

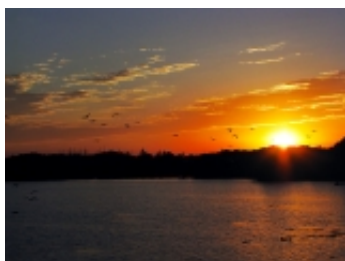
[Mitochondrial DNA Assessment of the Phylogeography of the Gopher Tortoise](#)

[Southeast Aquatic Resources Partnership October 2012 newsletter](#)

[Searching for Reviewers- Forest Adaptation Resources document covering Midwest and Northeast](#)

[Fleur de Lis Fisheries Oct-Nov 2012](#) - from the Natchitoches National Fish Hatchery

[Longleaf Alliance Fall 2012 newsletter](#)



ecosystems and their species. Our target audiences are Gulf of Mexico coastal and estuarine resource managers, state and regional conservation planners, and the conservation partnerships of the Gulf Landscape Conservation Cooperatives (LCCs).

[Read more](#) or download [GCVA Fact Sheet](#)

---

### **Gulf Coast Vulnerability Assessment Work Plan for Comments**

The Steering Committee for the [Gulf Coast Vulnerability Assessment](#) (GCVA) would like to request your input on the attached project work plan. The work plan identifies the project's goals, objectives, tasks, timeline, and team members. It has been reviewed by our newly formed project teams, which will provide critical expertise and guidance to the GCVA, and now we would like to hear from our stakeholders and partners. Please provide your comments to [Laurie.Rounds@noaa.gov](mailto:Laurie.Rounds@noaa.gov) by January 7, 2013.

[Read more](#) or download [GCVA Work Plan](#)

---

### **Global Sea Level Rise Scenarios for the United States National Climate Assessment**

Global sea level rise has been a persistent trend for decades. It is expected to continue beyond the end of this century, which will cause significant impacts in the United States. Scientists have very high confidence (greater than 90% chance) that global mean sea level will rise at least 8 inches (0.2 meter) and no more than 6.6 feet (2.0 meters) by 2100.

[Read more](#) or [download the NOAA Climate Program Office Report](#)

---

### **Staff Highlights**

Meg Goecker has been hired as the Coastal I&M Ecologist for the USFWS Refuge Inventory & Monitoring Network, and will be co-located at the Grand Bay NWR headquarters in Moss Point, MS starting November 13th. As the newest member of the I&M Gulf Network team she will be working with Refuges and their partners in conservation, with an emphasis on the coastal refuges of Alabama, Mississippi, and Louisiana.

### ***Opportunities & Events:***

[LMVJV Science Coordinator](#)

[Position open!](#)

[Practitioners' Network for Large Landscape Conservation](#)

[Field Assistants needed for 2013 Florida Grasshopper Sparrow Survey](#)

Download new [NPS Climate Change Action Plan](#)

[13th National Conference on Science, Policy, and the Environment: Disasters and Environment: Science, Preparedness, and Resilience](#)

[Balancing Nature and Commerce in Communities that Neighbor Public Lands](#), Feb 4-6, 2013

[Addressing Climate-related Uncertainty - new NCTC course](#), Feb 11-15, 2013

More upcoming events listed at the [gcpolcc.org Events page](#)

From the [gcpolcc.org Funding & Grants](#) page

From the [gcpolcc.org Position Announcements](#) Page

### ***News You Can Use***

[Reopening of Nomination Period for Members of the Advisory Committee on Climate Change and Natural Resource Science-deadline Dec. 24, 2012](#)

Download the just-released

[Read more](#)

The National Wildlife Refuge System is pleased to announce that R. Lee Holt has been selected as the Aquatic Ecologist for the National Wildlife Refuge System Inventory & Monitoring Network. Lee will be based at Cache River NWR in Arkansas starting with the New Year and joins David Richardson (terrestrial ecologist), Tim Fotinos (plant ecologist), Kristine Evans (data manager), Meg Goecker (coastal ecologist) and Janet Ertel (coordinator) to complete the I&M Gulf Network team. In his role as aquatic systems expert within this team, Lee will be working with Refuges and their partners in conservation throughout the Gulf Coastal Plains and Ozarks geography.

[Read more](#)

---

## **From Around the GCPO Region**

### ***Project Highlight***

#### **Water Quality Trading Feasibility in West Tennessee**

The Tennessee Chapter of The Nature Conservancy and its partner, Applied Ecological Services, recently completed a study that investigated the feasibility of establishing a water quality trading program in west TN streams that drain to the Mississippi River. Our goal was to examine if potential pollutant availability (nitrogen, phosphorous, and total suspended solids) was high enough to establish a water quality trading program as an alternative funding source for wetland restoration and conservation. The proposed water quality trading program centered on wetland creation or restoration in rural or agricultural areas as a means to offset pollutant loading or regulatory upgrades by sewage treatment plants and municipal separate storm sewer systems.

[Read more](#) or [Download the Report](#)

---

#### **Geomatics Projects within the GCPO LCC**

Upon starting my position here at Mississippi State University in mid September as [Geomatics Coordinator](#) for the GCPO LCC, I was immediately thrust into working on two much needed and much anticipated

[2012 North American Waterfowl Management Plan \(NAWMP\) Action Plan](#)

[Linking the historic 2011 Mississippi River flood to coastal wetland sedimentation](#)

***Focusing on ecosystem services:***

[A comparison of salt marsh construction costs with the value of exported shrimp production](#)

[Economics- Mangrove's Hidden Value](#)

[Are investments to promote biodiversity conservation and ecosystem services aligned?](#)

[News from northern Mississippi's Urban Forest: urban tree canopy worth \\$40.5 million/year](#)

[Incorporating Ecosystem Services into Assessments of Climate Change Vulnerability and Adaptation](#)



***Our LCC Network  
(border LCCs & CSCs)***

[South Atlantic LCC Dec 2012 newsletter](#)

[Gulf Coast Prairie Fall 2012 newsletter](#)

projects which had already begun. These projects are the development of the [Conservation Planning Atlas \(CPA\)](#) and the development of an updated [Land Cover DataBase \(LCDB\)](#). I would like to take a moment and update everyone on the current status of these projects being developed for the GCPO LCC.

[Read more](#)

---

## **A Comparison of Salt Marsh Construction Costs with the Value of Exported Shrimp Production**

Penaeid shrimp support valuable fisheries in the northern Gulf of Mexico, and shrimp productivity has been linked to coastal salt marshes. Continuing wetland loss in Galveston Bay, Texas (USA) has led to the development of various salt marsh restoration projects. These constructed wetlands often attempt to mimic natural marsh landscape characteristics within the region and incorporate marsh edge, because marsh edge appears important for fishery production. We estimated the value of shrimp production from nine of these constructed wetlands for comparison with project construction costs that ranged between \$9,555 and \$45,311 ha<sup>-1</sup> (2007 U.S.) Overall annual shrimp production attributable to the constructed wetlands ranged from 228 to 318 kg ha<sup>-1</sup>. After adjusting for natural mortality and production expected from open water replaced by marsh, the constructed marshes contributed an enhanced annual shrimp production between 90 and 146 kg ha<sup>-1</sup>. The annual value of this shrimp production from the nine wetlands ranged from \$425 to \$690 ha<sup>-1</sup>, based on the ex-vessel price of shrimp harvested in Galveston Bay. In relation to construction costs, shrimp production was higher for marsh terracing projects and small marsh islands built with nearby sediment than for marsh islands built with dredged sand.

[Download the Study](#)

---

[News from the South Central  
Climate Science Center](#)

[News from the Southeast  
Climate Science Center](#)

[News from the Northeast  
Climate Science Center](#)

[follow on Twitter](#) | [forward to a friend](#)

*Copyright © 2012 GCPO LCC c/o TWRA, All rights reserved.*



[unsubscribe from this list](#) | [update subscription preferences](#)