

# Board Evolution Discussion

September 2018 CTR Board Meeting

# Tiered board structure

- Executive board – Secretary Roger Millar, Chair
  - Big picture
  - Roger’s peers at the table
  - Politically influential, can effectively advance the board’s priorities
  - Quarterly, 90min meetings
  - Annual governor meeting
- Technical Committee – Assistant Secretary Marshall Elizer, Chair
  - Focused on supporting the vision and direction of executive board
  - Fulfills RCW CTR board requirements
  - Member composition similar to existing board members
  - Potential member overlap with executive board
  - Meets more frequently: bi-monthly or as needed

# Executive board

## Purpose:

Maximize affordable, multimodal transportation investments that effectively increase the efficient movement of people, goods and services, supports economic vitality and a clean, healthy environment

## Goal:

Increase the percentage of Washingtonians using alternative transportation commute methods to 29% by 2020

## Target:

Remove an additional 26,000 daily SOV commute trips by 2020 (roughly double CTR performance)

# Executive board roles and responsibilities

- **Influence** WSDOT, regional and local TDM investments
- Establish **TDM vision, targets, priorities**
- **Pursue** additional **TDM revenue**
- **Educate, advocate and advance** smart, efficient, cost-effective transportation investments
- **Empower** other partners to support board's goal
- **Elevate TDM's** effectiveness and importance in supporting a strong economy, public health, and the sustainability goals

# What role do you see yourself playing?

## **Executive Board**

- Challenge Seattle
- Governor's office
- Freight
- Transportation network companies (TNC's)
- Transit agency GMs and/or executives
- OFM and Ecology Directors
- Higher education
- Cities & counties
- Hospital/public health
- Active transportation

## **Technical Committee**

### Municipal or county jurisdiction representatives

- Amy Shumann, Public Health (Seattle and King County)
- Kristina Walker, Downtown on the Go (City of Tacoma)
- One vacancy

### Transit agency representatives

- Matt Hansen, King County Metro
- Jennifer Hass, Community Transit

### Citizen representatives

- Ted Horobiowski
- Bryce Yadon, Futurewise

### State government representatives

- Brian Lagerberg, Department of Transportation
- Veronica Jarvis, Office of Financial Management
- Nancy Pritchett, Department of Ecology

### Employer representatives

- Molly Beeman, Everett Community College
- Melissa Wideman, Office of Financial Management
- Two vacancies

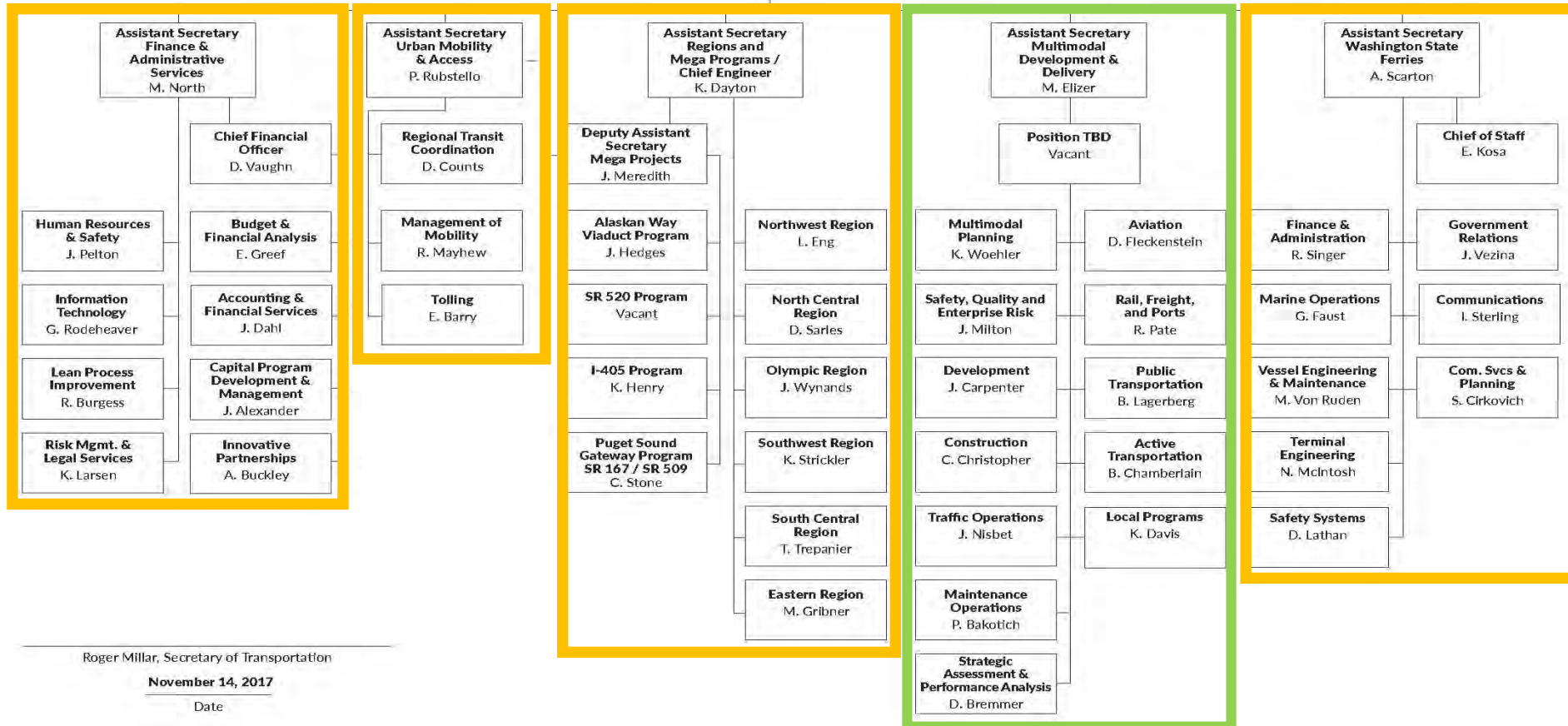
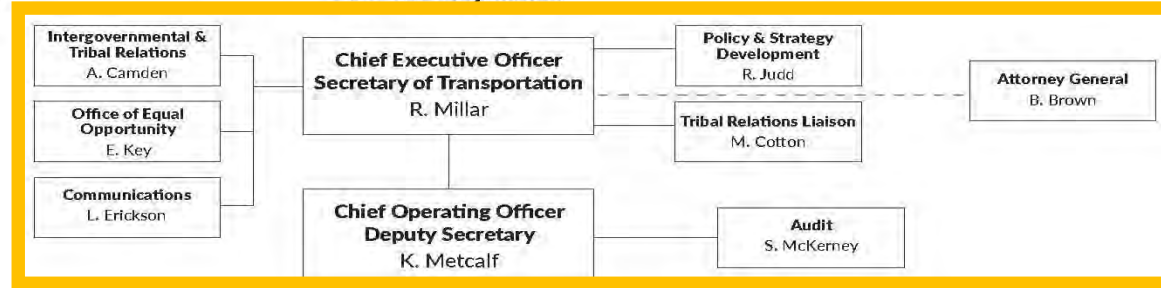
### Regional jurisdiction representatives

- Karen Parkhurst, Thurston Regional Planning Council
- Larry Mattson, Yakima Valley Conference of Governments

# WSDOT Reorganization



Citizens of the State of Washington  
Governor Jay Inslee



Roger Millar, Secretary of Transportation

November 14, 2017

Date

# WHY CREATE M2D2 ?

## M2D2 Goals

- Increase **coordination** between modes, programs and regions
- Enhance our consideration of **all mobility modes during all “development and delivery” phases**
- **Strengthen relationships** within the organization
- Build **better alignment** between all program/projects phases and modes
- Adapt to the **changing landscape** around us

*The new M2D2 Ass't Secretary will **work closely with divisions, regions and other Ass't Secretary's** while building collaborative relationships with local communities and partners.*