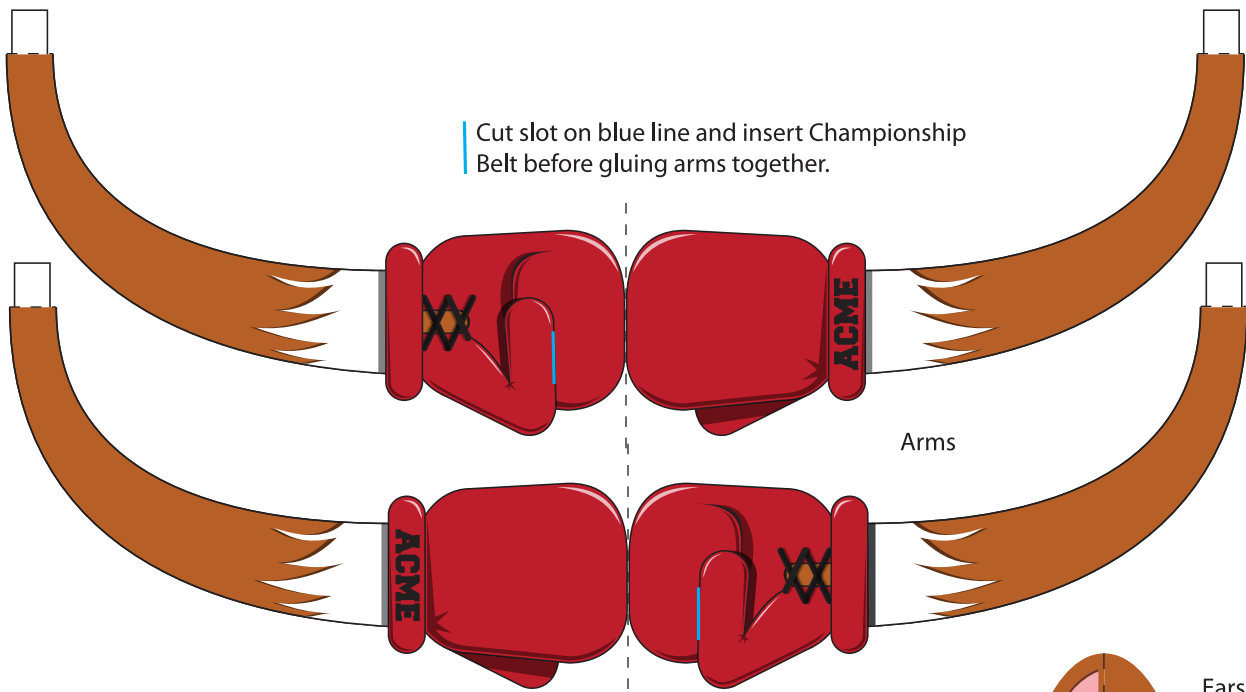


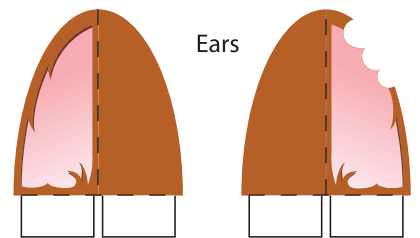
Cut slot on blue line and insert Championship Belt before gluing arms together.



Arms



Tail

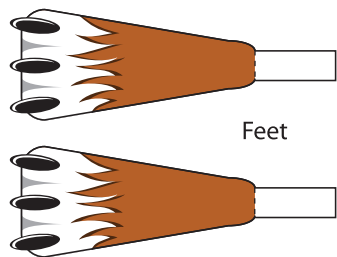
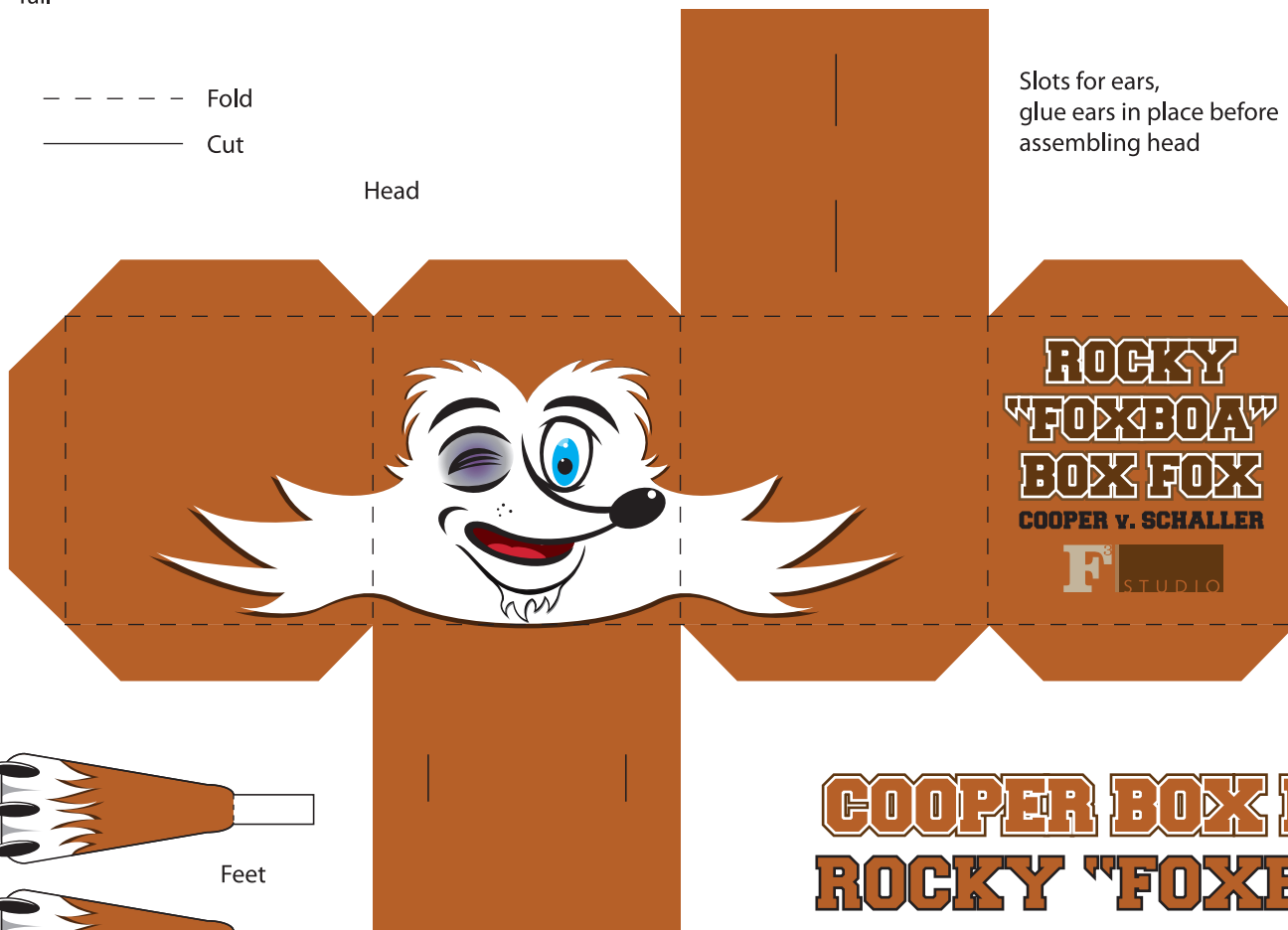


Ears

--- Fold
— Cut

Head

Slots for ears,
glue ears in place before
assembling head



Feet

Slots to attach body to
head, glue body in place
before assembling head

COOPER BOX FOX
ROCKY "FOXBOA"

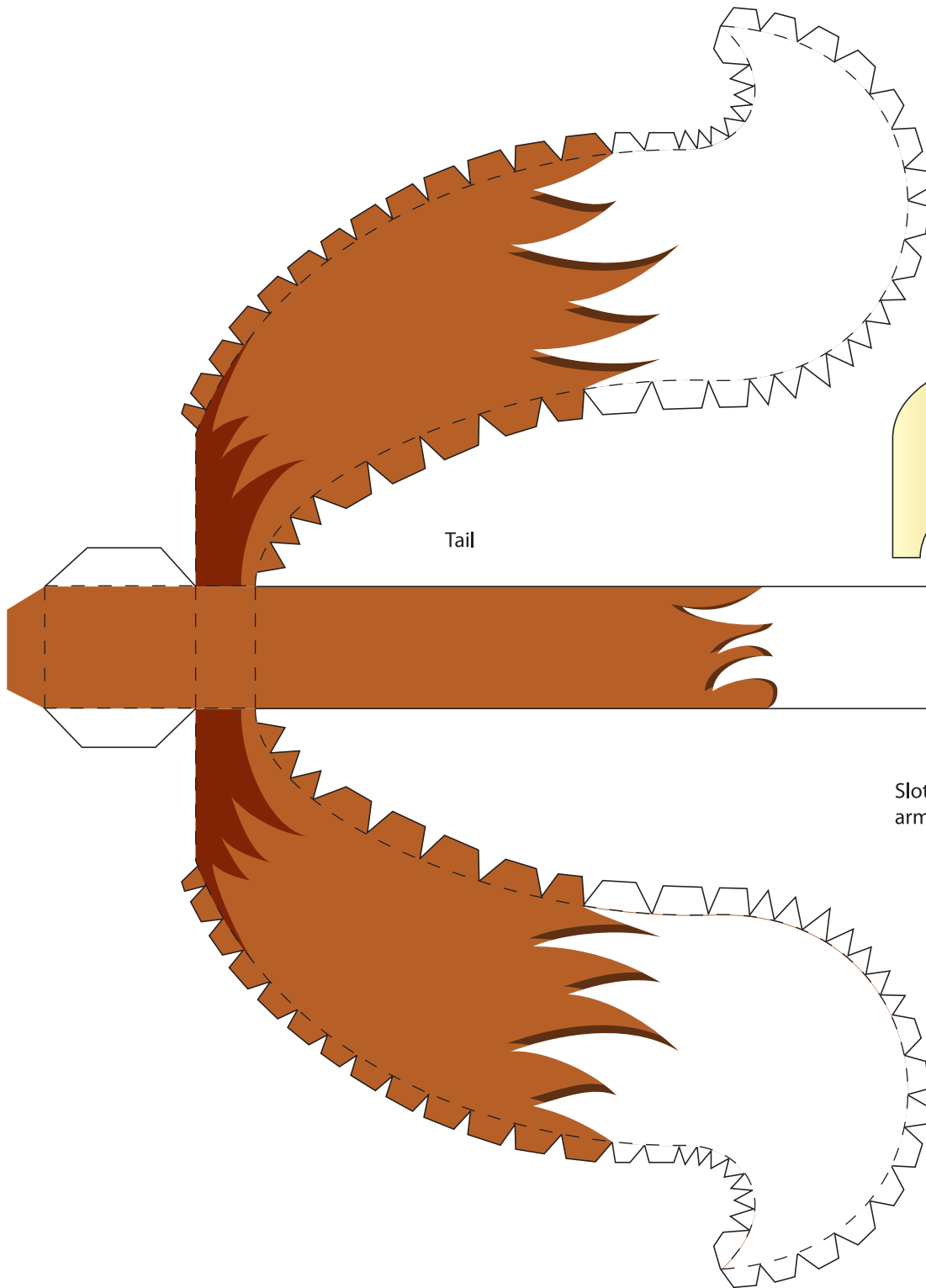


**CUSTOM BOX FOX BY
SCOTT SCHALLER**

<http://graphics.chs.lusd.org>

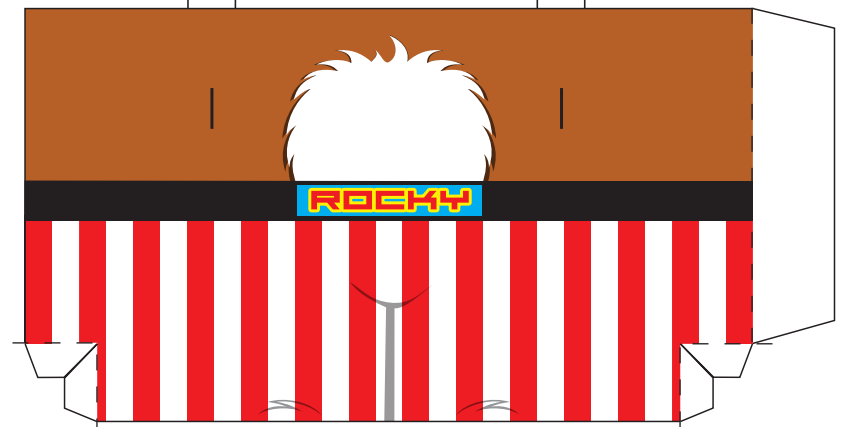
COOPER BOX FOX ROCKY "FOXBOA"

F³ STUDIO **CUSTOM BOX FOX BY
SCOTT SCHALLER**
<http://graphics.chs.lusd.org>



Slots to attach
arms to body

Tabs to attach to head



Body

Cut outs and flaps
to attach tail to body