



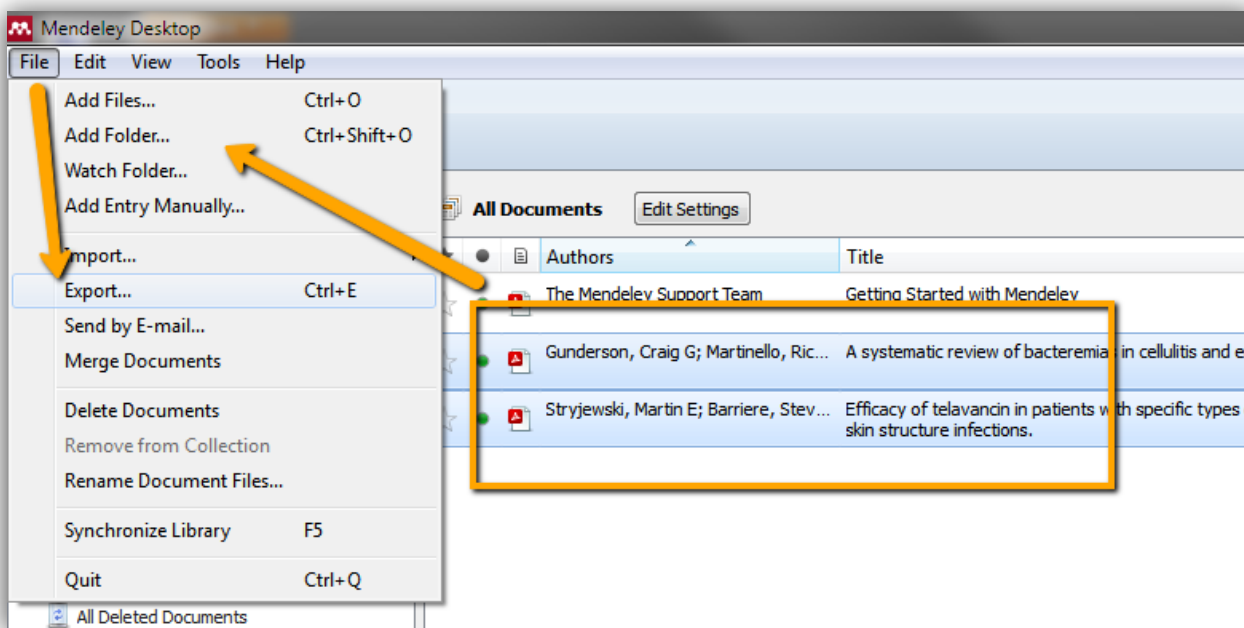
Ready Reference Guide

## **Exporting from Mendeley Desktop to RefWorks**

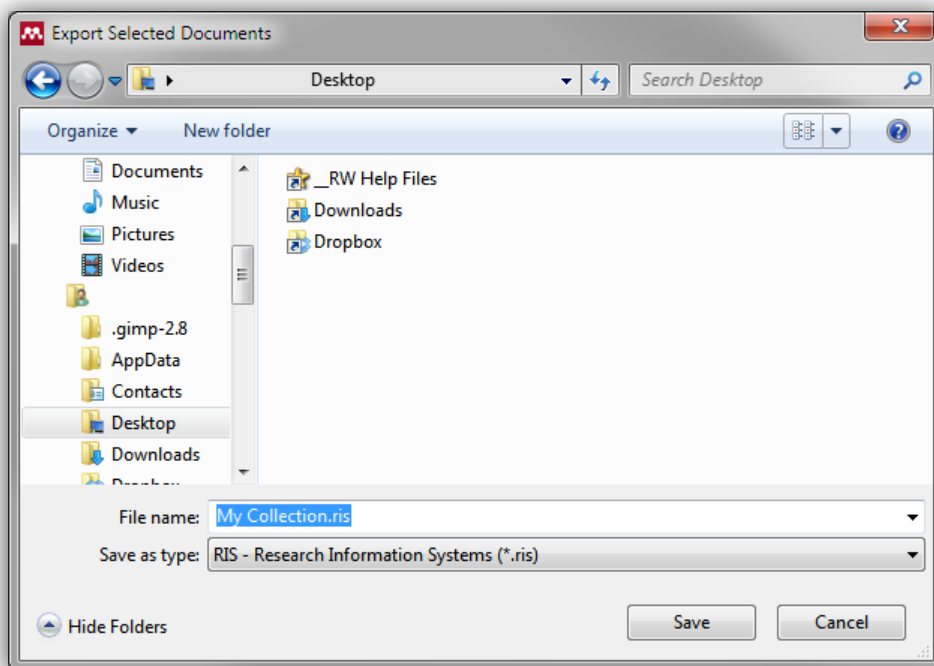
April 2013

## Exporting from Mendeley Desktop to RefWorks

1. Begin by selecting those items you wish to export from Mendeley Desktop from the **All Documents** area shown in the square below.
2. Then select the **File > Export** menu item to create an export file.



3. Select the **RIS – Research Information Systems** file type for your exported file and save the file to an easy-to-find location on your computer.



4. Log in to RefWorks.

5. Select **References > Import** from the toolbar.
6. Select *RIS Format* as the data source and *RIS Format* as the database.
7. Browse to find the text file you saved to your computer.

**Import References**

Import From [Request a Filter](#) [List of Filters & Databases](#)

▼ **From Text File**

Import Filter/Data Source: RIS Format

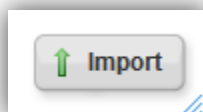
Database: RIS Format

Select Text File:  My Collection.ris

Encoding: ANSI - Latin I

Specify only if you specifically set the encoding when saving the text file; otherwise leave it as is

8. Click **Import**.



9. Your records should appear in the **Last Imported Folder**.

References > **Last Imported**

References | Organize & Share Folders

References to Use:  Selected  Page  All in List

Sort by: Authors, Primary | Change View: Standard View

Ref ID 94 | Journal Article Reference 1 of 2

Authors: [Gunderson, Craig G.](#); [Martinello, Richard a](#)

Title: A systematic review of bacteremias in cellulitis and erysipelas

Source: [J.Infect.](#), 2012, 64, 2, 148-55, Elsevier Ltd

Folders: [Last Imported](#)

LINK to Full Text

Ref ID 95 | Journal Article Reference 2 of 2

Authors: [Strziewski, Martin E.](#); [Barriere, Steven L.](#); [O'Riordan, William](#); [Dunbar, Lala M.](#); [Hopkins, Alan](#); [Genter, Fredric C.](#); [Corey, G R.](#)

Title: Efficacy of telavancin in patients with specific types of complicated skin and skin structure infections

Source: [J.Antimicrob.Chemother.](#), 2012, 67, 6, 1496-502

Folders: [Last Imported](#)

LINK to Full Text