

Quick Guide to the MAPP Website and MAPP Resources



MOBILIZING FOR ACTION THROUGH PLANNING AND PARTNERSHIPS (MAPP)

Introduction to the MAPP Website

The comprehensive Mobilizing for Action through Planning and Partnerships (MAPP) website guides users through the MAPP process, but first-time users might find it daunting to navigate. The website provides in-depth guidance on all of MAPP's six phases. The website also features a resource clearinghouse; information about trainings and events; links to MAPP publications, stories, and case studies; and information about technical assistance.

How to Find the MAPP Website

To access the MAPP website directly, visit www.naccho.org/mapp. To access the MAPP website from NACCHO's homepage, first go to www.naccho.org. Next, under Programs and Activities, select Public Health Infrastructure and Systems (PHIS) from the drop-down menu. On the PHIS page, choose MAPP from the list of programs located beneath the page heading.

Useful Website Tips for Each Phase

Introduction and Overview

The MAPP homepage provides a brief introduction to MAPP, with some helpful guidance about how to use the website. For a more complete overview of the process, use the "Related Content Toolbar" on the right-hand side of the page to access the MAPP Basics webpage.

Highlights, Overview, and In-Depth Guidance for Each MAPP Phase

The MAPP Framework page contains a list of six links corresponding to the six MAPP phases. Click on each phase (e.g., "Organizing") to access corresponding phase highlights and, at the bottom of the page, links to the overview and in-depth guidance. The overview on each page is a great resource to orient a MAPP Steering Committee to relevant phases. The in-depth guidance provides the full explanation for that phase.

Clearinghouse of Resources

Once users learn what a phase is all about, they might want to access examples and tools to help them implement that phase. The clearinghouse includes sample surveys, tip sheets, templates, and flyers. The tools are available to download in varying formats (e.g., PDF, Microsoft Word, Excel, PowerPoint, and video).

From the MAPP homepage, click on the "Clearinghouse of Resources" link located within the "Related Content Toolbar" to access the index. Once in the index, click on any of the six phases or an additional five categories to access related tools.

Users can also access the clearinghouse from each of the MAPP phases (e.g., "Organize for Success"). Clicking on the "Clearinghouse of Resources" link from a phase will send users directly to the resources within the clearinghouse for that specific phase. The bottom of the page contains links back to either the phase or to the index.

MAPP News, Trainings, and Other Events

The “MAPP News, Trainings, and Other Events” link is located within the Related Content toolbar. Click on that link to access a calendar of events, information about how to get training within a particular state, a list of upcoming and recorded technical assistance webinars, archived MAPP e-bulletins, and MAPP list service subscription information.

MAPP Publications

All hard-copy publications associated with MAPP can be downloaded or ordered by clicking on the Publications link within the Related Content toolbar.

Connect with Other MAPP Users

The “Connect with Other MAPP Users” link is located within the Related Content toolbar. This section includes information about the MAPP list service and the MAPP Network. To access the MAPP Network, visit <http://mappnetwork.naccho.org>.

Stories from the Field

To access MAPP user stories, case studies, and vignettes, use the “Stories from the Field” link located on the Related Content toolbar. This index organizes stories into four categories: user stories, demonstration site case studies, vignettes by phase, and other vignettes.



Get Your Questions Answered

To find answers to MAPP questions, use the “Get Your Questions Answered” link located on the Related Content toolbar. The index organizes questions into 10 categories: using the website, general MAPP, MAPP phases 1 and 2, the assessments, identifying strategic issues, evaluation, how MAPP connects with other national initiatives, and MAPP in rural communities. This section also explains how to contact MAPP mentors and NACCHO staff for more information.

General Tips

Regardless of where users are on the MAPP website, they can link back to the MAPP homepage by clicking on the “MAPP” link in the upper left-hand corner. The right-hand Related Content toolbar is available on nearly every page; however, when the toolbar is not available, scroll down to the bottom of the page to find links to the previous page and the MAPP homepage.

Introduction to MAPP Resources

Full guidance on the MAPP process, including worksheets, tip sheets, presentations, training opportunities, and opportunities to connect with other MAPP users, is available on NACCHO's website at www.naccho.org/mapp. This fact sheet provides a brief description of the resources available through the MAPP website.

Technical Assistance

NACCHO offers technical assistance for MAPP users through online resources at www.naccho.org/mapp.

Technical Assistance Webinar Series

This series features experienced MAPP users who share their insights on MAPP implementation issues and answer participants' technical assistance questions. To register for upcoming webinars and listen to recordings, visit www.naccho.org/topics/infrastructure/mapp/tawebcasts.cfm.

Technical Assistance Q&A

This webpage provides answers to technical assistance questions posed through the MAPP Network or during MAPP technical assistance webinars. To view frequently asked questions visit www.naccho.org/topics/infrastructure/mapp/framework/faq.cfm.

MAPP Network

The MAPP Network is a resource for past, present, and future MAPP communities. The site can be used to convene community partners, meet fellow MAPP users, solicit advice from MAPP mentors, connect with other MAPP communities, and learn about MAPP resources. To view, access, and join the MAPP Network, visit <http://mappnetwork.naccho.org>.

MAPP Clearinghouse

The clearinghouse allows current and new MAPP users to browse, adopt, and tailor tools and resources that other MAPP users have applied to complete the different phases of MAPP. To access the clearinghouse, visit www.naccho.org/topics/infrastructure/mapp/framework/clearinghouse/.

MAPP List Service

The MAPP List Service is a forum for users to share information about MAPP. List service members also receive NACCHO's bimonthly MAPP e-bulletin, which provides information about MAPP resources, events, and funding opportunities. To subscribe, send a blank message to mapp-sub@lists.naccho.org.

MAPP Publications

THE MAPP USER'S HANDBOOK

The MAPP User's Handbook is a condensed version of the Web-based tool and includes practical tip sheets and worksheets. Order or download copies by visiting www.naccho.org/topics/infrastructure/mapp/framework/mapppubs.cfm.

MAPP FIELD GUIDE

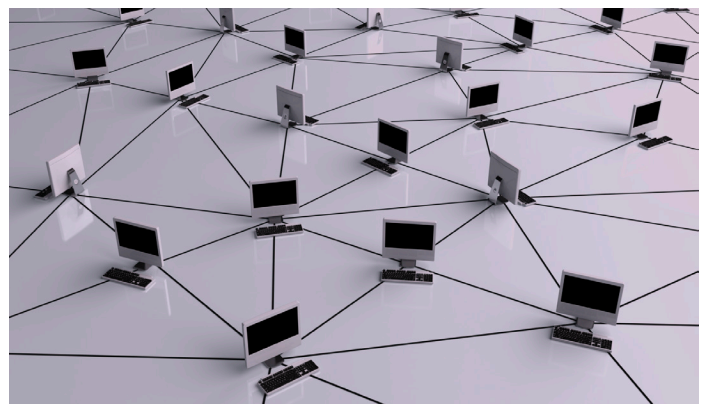
The MAPP Field Guide is a 24-page overview of the process. Download or order copies by visiting www.naccho.org/topics/infrastructure/mapp/framework/mapppubs.cfm.

MAPP VIDEO

The MAPP video highlights how MAPP has been used in communities across the country and includes frequently cited benefits of the process. Order copies at <http://eweb.naccho.org/prd/?na343dvd> or view the video on NACCHO's YouTube channel at www.youtube.com/user/nacchoph.

JOURNAL OF PUBLIC HEALTH MANAGEMENT AND PRACTICE, MAPP EDITION

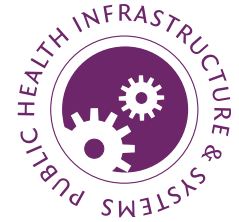
The September 2005 edition of the *Journal of Public Health Management and Practice* focused on MAPP. This issue addresses issues related to implementing MAPP and the NPHPSP local instrument. Order copies at www.naccho.org/topics/infrastructure/mapp/framework/research.cfm.



Visit the MAPP Network to meet fellow MAPP users.

[FACT SHEET]

July 2010



National Public Health Performance Standards Program (NPHPSP)

The NPHPSP local instrument is used to complete the Local Public Health System Assessment, which is one of four assessments included in MAPP. Information about this assessment, the assessment instrument, and supporting tools

are available at www.naccho.org/topics/infrastructure/nphpsp.cfm.



The national organizations that comprise the NPHPSP partnership provide resources for NPHPSP users. Additional information about the NPHPSP program can be found by visiting the following websites:

American Public Health Association

www.apha.org/programs/standards/performancestandardsprogram/

Association of State and Territorial Health Officials

www.astho.org/programs/accreditation-and-performance/national-public-health-performance-standards/

Centers for Disease Control and Prevention

www.cdc.gov/od/ocphp/nphpsp

National Association of Local Boards of Health

www.nalboh.org/nphpsp.htm

National Network of Public Health Institutes: NPHPSP Users' Calls

www.nnphi.org/home/section/1-15//view/40

Public Health Foundation

www.phf.org/nphpsp

MAPP Demonstration Sites

CASE STUDIES

In 2001, NACCHO selected nine communities as demonstration sites for the newly developed MAPP tool. Case studies of six demonstration sites are available at www.naccho.org/topics/infrastructure/mapp/demosites/.

WEBSITES

Some MAPP demonstration sites have posted information about their MAPP processes online. To learn more, visit the following websites:

The Alliance for Community Health in San Antonio and Bexar County

www.sanantonio.gov/health/alliance-main.html

Mendocino, The Rural Challenge

www.co.mendocino.ca.us/ph/rcc

FOR MORE INFORMATION

Please let NACCHO's MAPP program staff know if they can do anything to better assist you.

Julia Joh Elligers, MPH

Program Manager
(202) 507-4234
jjoh@naccho.org

Mary Kate Allee, MPH

Senior Analyst
(202) 507-4190
mallee@naccho.org

NACCHO

National Association of County & City Health Officials

The National Connection for Local Public Health

www.naccho.org



The mission of the National Association of County and City Health Officials (NACCHO) is to be a leader, partner, catalyst, and voice for local health departments in order to ensure the conditions that promote health and equity, combat disease, and improve the quality and length of all lives.

1100 17th St, NW, 7th Floor Washington, DC 20036

P (202) 783 5550 F (202) 783 1583