

A Beginner's Jam Session bluegrass



MECCA
Killeen, Texas

Handsome Molly

G
1. I wish I was in Lon-don
D
or some oth-er sea-port town,

I'd set my foot on a steam-boat,
G
and sail the o-ccean 'round.

G
Chorus: Oh, sail-ing 'round the o-ccean,
D
while sail-ing 'round the sea,

I'd think of hand-some Mol-ly
G
where ev-er she may be.

G
2. Her hair was black as/a ra-ven,
D
Her eyes were black as coal,

Her teeth shone like
G
the lil-lies, out in the morn ing cold.

Chorus:

G
3. Don't you/re mem-ber Mol-ly,
D
When/you give me your right hand,

You said if ever you mar-ried,
G
That I would be your man.

Chorus:

G
4. Now you/ve broken your prom-ise,
D
go mar-ry whom you please,

while my poor heart is ach-ing,
G
you're ly-ing at your ease.

Chorus:

Take Me Back To Tulsa

G
1. Where's that gal with the red dress on?
D7
Some folks call her Di-nah

Stole her heart a-way from me,
G
way down in Louis-i-an-a

Chorus:

G
Take me back to Tul-sa,
D7
I'm too young to mar-ry;

Take me back to Tul-sa,
G
I'm too young to mar-ry;

G
2. Oh walking and talking Su -sie,
D7
just walking and talking Su -sie,

Oh, walking and talking Su- sie,
G
just walking and talking Su- sie.

Chorus:

G
3. Where's that gal with the red dress on?
D7
Some folks call her Di-nah

Stole her heart a-way from me,
G
way down in Louis-i-an-a

Chorus:

Hot Corn Cold Corn

Chorus:

G
Hot corn cold corn bring a-long a de-mi-john,
D
Hot corn cold corn bring a long a de-mi-john,
G
Hot corn cold corn bring a long a de-mi-john
D
Fare thee well, Un-cle Bill see you in the morn-ing, yes, sir!

G
1. Up-stairs down-stairs, out in the kit-chen,
D
Up-stairs, down-stairs out in the kit-chen,
D
Up-stairs down-stairs out in the kit-chen,
D
Old un-cle Bill just a ra-ring and a pitch-ing, yes sir!

Chorus:

G
2. Old aunt Pol-ly won't you fill-'er up a-gain?
D
Old aunt Pol-ly won't you fill-'er up a-gain?
G
Old aunt Pol-ly won't you fill-'er up a-gain?
D
Ain't had a drink since I dont' know when, yes sir!

Chorus:

G
3. Yonder/come the preacher and/the child-ren are a cry-ing,
D
Yonder/come the preacher and/the child-ren are a cry-ing,
G
Yonder/come the preacher and/the child-ren are a cry-ing,
D
chick-en a holler-in' and toe nails a fly-in, yes sir!

Chorus:

New River Train

G
1.Dar-ling you can't love one,
D
Dar-ling you can't love one,
G
You can't love one and have any fun,
D **G**
Oh, dar-ling you can't love one.

Chorus:

G
I'm rid-ing on that New Riv-er Train,
D
Rid-ing on that New Ri-ver Train.
G
That same old train that brought me here,
D **G**
Gon-na car-ry me a-way a-gain.

Chorus:

G
2.Dar-ling you can't love two,
D
Dar-ling you can't love two,
G
You can't love two
and/have your heart be/true.
D **G**
Oh, dar-ling you can't love two.

Chorus:

G
3.Dar-ling you can't love three,
D
Dar-ling you can't love three,
G
You can't love three and still love me,
D **G**
Oh, dar-ling you can't love three.

Chorus:

In The Pines

Chorus:

G
In the pines, in/the pines,
C G
where/the sun never shines,
D7 G
and/we shiver when/the cold winds blow.
C G
Ooh ooh ooh ooh ooh ooh ooh
D7 G
ooh, ooh, ooh, ooh.

G C
1.The long-est train I ev-er saw
D7 G
went down the Geor-gia line,
C G
The en-gine passed at six o' clock
D7 G
the cab went by at nine.

Chorus:

G C G
2.Lit-tle girl little girl what have I done
D7 G
that makes you treat me so?

You've caused/me to weep,
C G
you've caused me/to mourn,
D7 G
you've caused me/to leave my home.

Chorus:

G
3.Well I asked the captain
C G
for/the time/of the day.
D7 G
He/said/he'd thrown his watch a way,
C G
It's a long steel rail, and/a short cross tie,
D7 G
I'm on my way back home.

Chorus:

Long Journey Home

Chorus:

G
Lost all my mon-ey but a two dol-lar bill,
C G
Two do-llar bill boys, two dol-lar bill,
Lost all my mon-ey but a two dol-lar bill,
D G
I'm on my long jour-ney home.

G
1.Cloud-y in/the West and it looks like rain,
C G
Looks like rain, boys, looks like rain,
Cloud-y in/the West and it looks like rain,
D G
I'm on my long jour-ney home.

Chorus:

G
2.Black smoke's is ris-ing and it sure-ly is a train,
C G
Sure-ly is a train boys, sure-ly is a train,
Black smoke's a ris-ing and it sure-ly is a train,
D G
I'm on my long jour-ney home.

Chorus:

G
3.Home sick and lone-some -
and I'm feel-ing kind- a blue,
C G
Feel-ing kind-a blue, boys, feel-ing kind-a blue,
Home-sick and lone-some and I'm feel-ing kind-a blue,
D G
I'm on my long jour-ney home.

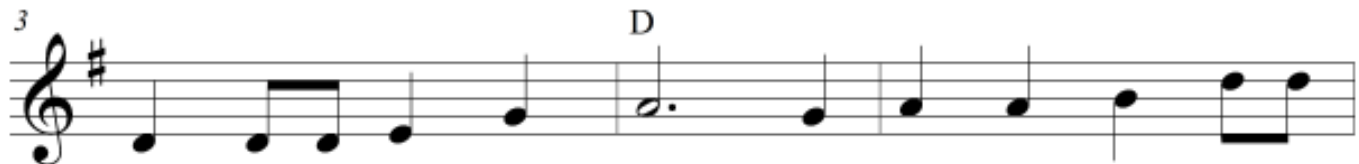
Chorus:

Handsome Molly

Fiddle



1.I wish I was in Lon - don or
 Cho: sail - ing 'round the o - cean, while
 2.Her hair was black as/a ra - ven, Her
 3.Don't you/re mem - ber Mol - ly, When/you
 4.Now you/ve broken your prom - ise, go



some oth - er sea - port town, I'd set my foot on a
 sail - ing 'round the sea, I'd think of hand - some
 eyes were black as coal, Her teeth shone like the
 give me your right hand, You said if ever you
 mar - ry whom you please, while my poor heart is



steam - boat and sail the o - cean 'round. Cho:Oh,
 Mol - ly where ev - er she may be
 lil - lies, out in the morn ing cold.
 mar - ried, That I would be your
 ach - ing, you're ly - ing at your ease:

Copyright MECCA 2011

Take Me Back To Tulsa

Fiddle

A

1. Where's that gal with the red dress on? Some folks call her Di - nah

5

Stole her heart a - way from me, way down in Louis - i - an - a

B

Chor: Take me back to Tul - sa, I'm too young to mar - ry;

13

Take me back to Tul - sa, I'm too young to mar - ry. 2. Oh

17

walking and talking Su sie, just walking and talking Su sie, Oh,

21

walking and talking — Su sie, just walking and talking — Su sie,

25

Take me back to Tul sa I'm too young to mar ry,

29

Take me back to Tul sa I'm too young to mar ry.

Hot Corn, Cold Corn

Fiddle



Cho: Hot corn cold corn bring a - long a de - mi - john,
 1. Up - stairs down - stairs, out _____ in the kit - chen, _____
 2. Old aunt Pol - ly won't you fill - 'er up a - gain?
 3. Yonder/come the preacher and/the child - ren are a cry - ing, _____



Hot corn cold corn bring a long a de - mi - john,
 Up - stairs, down - stairs out _____ in the kit - chen, _____
 Old aunt Pol - ly won't you fill 'er up a - gain? -
 Yonder/come the preacher and/the child - ren are a cry - ing, _____



hot corn cold corn bring a long a de - mi - john
 Up - stairs down - stairs out _____ in the kit - chen, _____
 Old aunt Pol - ly won't you fill - 'er up a - gain?
 Yonder/come the preacher and/the child - ren are a cry - ing, _____



Fare thee well, Un - cle Bill see you in the morn - ing,
 Old un - cle Bill just a ra - ring and a pitch - ing,
 ain't had a drink since I don't _____ know _____ when. _____
 chick - en a holler - in' and toe nails _____ a fly - in,



yes, _____ sir!
 yes _____ sir!
 when, _____ yes
 yes _____ sir!

Copyright MECCA 2011

New River Train

4/4 - 1, 5

Fiddle

G D

Chor:	1. Dar-ling you can't love one, rid - ing on that New Riv-er Train,	Dar-ling you can't love one, You Rid-ing on that New Ri-ver Train. That
2. Dar ling you can't love two,	Dar ling you can't love two, You	
3. Dar ling you can't love three,	Dar-ling you can't love three, You	

5

can't love one and same old train that can't love two and/have can't love three and	have any fun, Oh, — dar-ling you can't love one. — brought me here, Gon-na car-ry me a - way a - gain. — your — heart be/true. Oh, dar ling you can't love — still love me, Oh, — dar-ling you can't love three. —
--	---

Copyright MECCA 2011

In the Pines

3/4 - 1, 4, 5

Fiddle



Chorus: In the pines, in the pines, where the sun never
 1. The long - est train I ev - er
 2. Lit - tle girl little girl what have I
 3. Well I asked the captain for the time of the



shines, and we shiver when the cold winds blow.
 saw we went down makes the you Geor - gia line,
 done that He said he'd thrown his treat me so?
 day. He said he'd thrown his watch a way,



Ooh - ooh ooh ooh ooh ooh
 The en - gine passed at six ooh
 You've caused me to weep, you've caused o'
 It's a long steel rail, and a short cross



ooh ooh ooh ooh ooh ooh In the ooh
 clock the cab went by at nine.
 mourn you've caused me to leave my home.
 tie, I'm on my way back home.

Copyright MECCA 2011

Columbus Stockade Blues

4/4 - 1, 5, 4

Fiddle

A D

A7



Way down in Columbus Geor - gia, Want to be back in Ten - nes
Last night as I lay sleep - ing, I dreamed I held you in my

D

A7



see. Way down in Co-lum-bus stock - ade, my friends have
arms. When I a - woke I was mis - tak - en, I was

D

B G



turned thier backson me. You can go a - way and leave me if you
peeping through the bars.

D

G

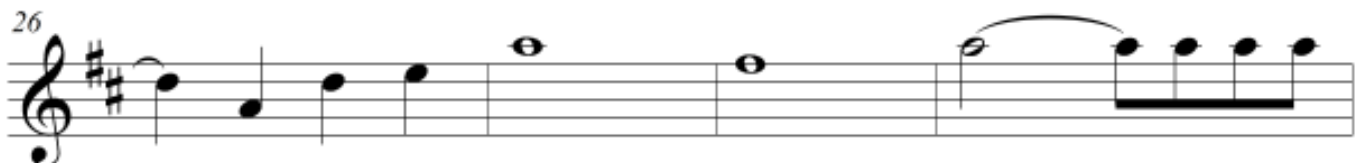
A7

D



wish to, Nev - er let it cross your mind. In your heart,

A7



— you love an - oth - er, Leave me lit - tle

D



dar - ling I don't mind. mind.

Copyright MECCA 2011

Columbus Stockade Blues

4/4 - 1, 5, 4

Fiddle

A G

D7



Way down in Columbus Geor - gia,
Last night as I lay sleep - ing/I

Want to be back in Ten - nes -
s dreamed I held you in my

G

D7

7



see. Way down in Co - lum - bus stock - ade, my friends have
arms. When I a - woke I was mis - tak - en, I was

G

B C

14



turned thier backs on me. You can go a - way and leave me if you
peeping through the bars.

G

C

D7

G

19



wish to, Nev - er let it cross your mind. In your heart,

D7

26



— you love an - oth - er, Leave me lit - tle

G

30



dar - ling I don't mind. mind.

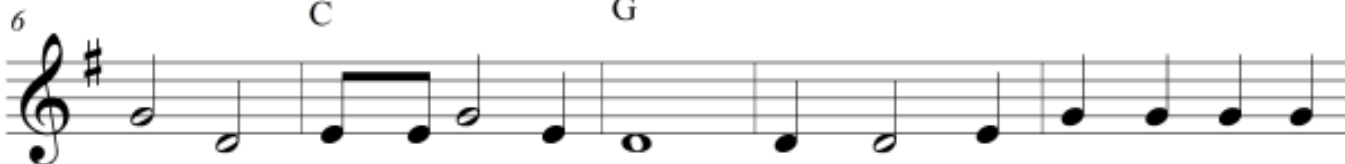
Long Journey Home

4/4 - 1, 4, 5

Fiddle



2. Black smoke's is ris - ing and it sure - ly is a train, Surely is a
 Cho: Lost all my mon - ey but a two - dol - lar bill, Two - dol - lar
 1. Cloudy - y in / the West - and it looks like - rain, Looks like -
 4. Dark and a' rain - ing and I want to go home, Want to go
 3. Home sick and lonesome am I'm feel - ing kind - a blue, Feel - ing kind -



train boys, sure - ly is a train, Black smoke's a ris - ing and it
 bill boys, two - dol - lar bill, Lost all my mon - ey but a
 rain, boys, looks like - rain, Cloud - y in / the West - and it
 home, boys, want - to go home, Dark and a' rain - ing an I
 a blue, boys, feel - ing kind - a blue, Home - sick and lone - some and



sure - ly is a train, I'm on my long jour - ney home. _____
 two - dol - lar bill, I'm on my long jour - ney home. _____
 looks like - rain, I'm on my long jour - ney home. _____
 want - to go home, I'm on my long jour - ney home. _____
 I'm feel - ing kind - a blue, I'm on my long jour - ney _____

Columbus Stockade Blues

Way__ down___ in Co-lum-bus Geor-gia,
Want to be back in Ten-nes-see.

Way down in Co-lum-bus stock-ade,
my friends have turned thier backs on me.

Chorus:

You can go a-way and leave me if you wish to,
Nev-er let it cross your mind.

In your heart, you love an-oth-er,
Leave me lit-tle dar ling I don't mind.

2. Last night as I lay sleep-ing,
/I dreamed I held you in my arms.

When I a-woke I was mis-tak-en,
I was peeping through the bars.

Chorus:



These tunes have been selected from the beginner and intermediate instructional play along jam session videos produced by Pete Wernick and the All-Star Bluegrass Band. The lyrics on the sheet music match those on the video tracts.

The instructional videos only include the backup playing instruction. Included here is the sheet music for the melody instruments in a lead sheet style. (melody, chords, and lyrics)



1. Handsome Molly (G)
2. Take Me Back To Tulsa (G)
3. Hot Corn, Cold Corn (G)
4. New River Train (G)
5. In The Pines (G)
6. Long Journey Home (G)
7. Columbus Stockade Blues (D)

www.mecatx.ning.com
Texasbluegrass group

www.ustream.tv
texasbluegrass

you tube
mecatx