

DIAGRAM 1



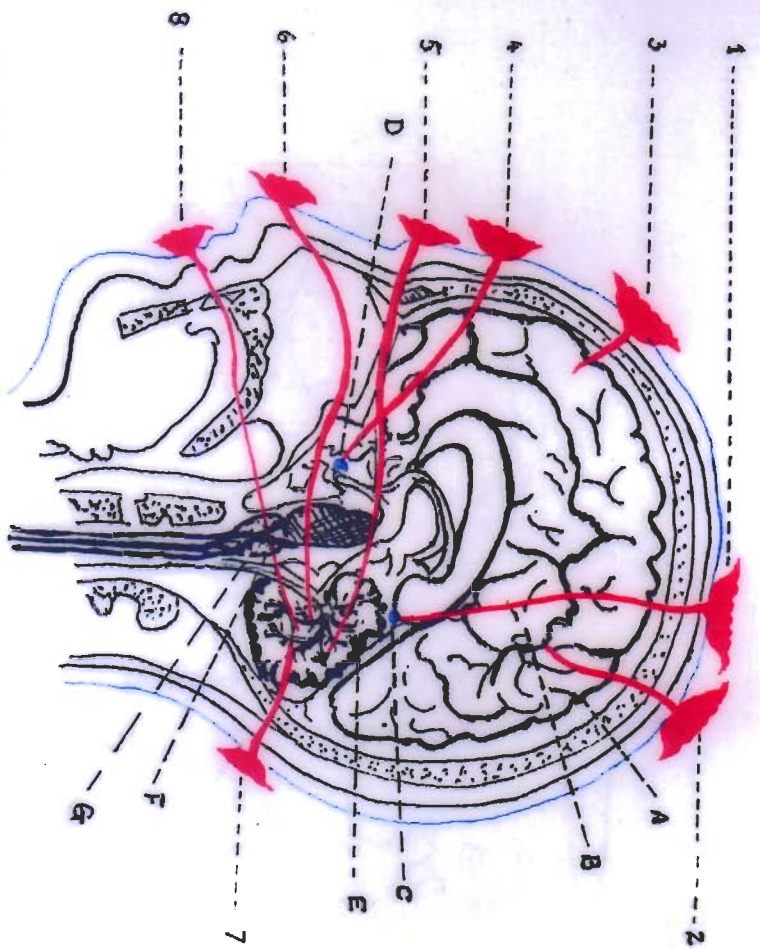
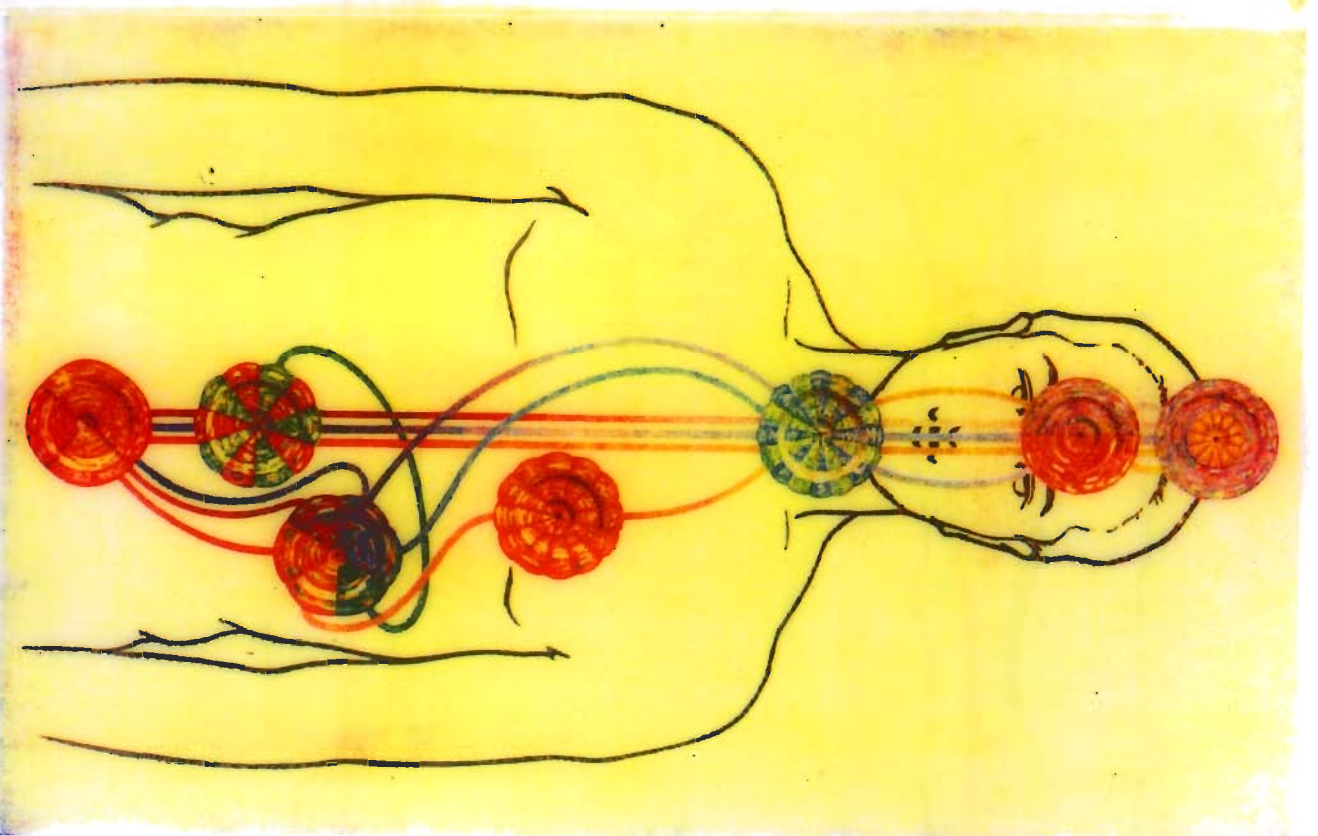


DIAGRAM 2:

No. in Diagram	Name of Chakra	Linked to connection of Chakra tube in Physical body.
1)	L-Hyaan	Pineal gland
2)	Hum Kay	Cerebrum
3)	Nash Raan ul Kharej	Pituitary in Cerebrum, (i.e. special set of brain cells & nerves-endings)
4)	Byanz	Pituitary
5)	Kaburz ul Khurez (between eyes)	Cerebellum
6)	Ejhanz (lower nose)	Cerebellum
7)	Ur bun ul Kharez (between ears)	Cerebellum
8)	Enkies (lower tongue)	Cerebellum

1 = The bony structure of the skull. 2 = the Cerebrum: This has two portions or lobes, the left & the right lobe. 3 = Cerebellum - This has two portions also; left & right or anterior & posterior. 4 = The Ponsvarfoll and the decussation of the pyramids showing the left cord of the great Sympathetic nervous system crossing over the right cord. The Central black line is the great Central nerve passing through the spine.



← LHYAAN  
Pineal gland chakra  
golden yellow  
blue & magenta

← BYAAZ  
Pituitary gland chakra  
violet and red

← OKLA THROAT  
chakra  
indigo and orange  
colours

← KABURZ UL DAKHIL  
Heart chakra  
reddish-orange

← Spleen chakra  
All 7 colours to  
separate violet

← Navel chakra  
green & red

← Nabi ul Khur Bose  
chakra  
reddish brown

Acknowledgements: This picture is reproduced from the book entitled "The Chakras"

## PART I (C)

### METHODS OF DIAGNOSIS — 9 PARTS OF A HUMAN BEING — THE 16 CHAKHRAS OF THE KEHRP (AURA) — THE PARTS OF THE AURA — AUI — KEHRP — MADER KEHRP— AZDE. THE 4 'ANASERES' — GRADES OF MATTER

(13) Every human being on Earth, for the sake of medical analysis is "dissected" or divided into 9 (NINE) Parts. (fn. 15) These 9 parts are the following:

- (1) TANU — Bony Skeleton.
- (2) GAETHA — All soft parts including organs, blood, nerves, muscle tissues, skin, hair, nails etc.
- (3) AZDE — the Astral layer, which is visible to clairvoyant eyes, of nerve fluid like a sweet oily substance which is ethereal and can vaporise, which is partly under the skin and partly projects beyond the skin for upto about half an inch. In colour Kirlian photographs this appears as the "white" light region within the aura, closest to the skin.

These three PARTS are the "PHYSICAL BODY. They are composed of "matter" of the solid, liquid, gaseous and fire vibratory grades and on "corporeal death" of the body occurring these disintegrate into the four grades of matter and re-merge into the grades of matter on Earth in Nature.

- (4) KEHRP — The Aura — or Auric body or Ethereal Body which surrounds the physical body. Within this Kehrp-region (i.e. in the aura- "atmosphere" which surrounds the physical body) there exist 16 CHAKHRAS — i.e. receiving centres of vibratory energies. The Kehrp and Mader — Kehrp are the 'factories' for the physical body.
- (5) USHTAN — The Life — Breath, or Life — Force (Jeev). This is not just the oxygen etc gases which the physical body organs breathe in and breathe out. This is the vibratory current which carries the Life-force from the Tevishi — i.e. the Desires — envelope part of the Aura, to the Kehrp — the aura proper.
- (6) TEVISHI — The Desires|Emotions Layer. The vibrations which pass from the innermost thoughts of the soul pass through this area and are transmitted through the Ushtan into the Kehrp and thence into the Physical Body. The vibratory frequencies of the emotional layer are very powerful and produce colours in the Kehrp depending on the emotion — e.g. Love — Golden white, Hate and Malice — Black, Greed — muddy splotchy brown; Thoughtfulness — Blue; Sadness-Indigo, Joy|Happiness — Pink|Red etc.

These three parts numbers 4-5-6 above are invisible to ordinary human eyes. In my view it is the parts of the Kehrp (Aura) that have been photographed as the colour-lights portion in Kirlian photographs of the Bio-Dynamic Energy field surrounding a person. These three continue to exist even after corporeal death of a person occurs. These three constitute the "invisible body" which becomes the "abode of the soul" during the period between one life span on Earth (ie. "death") and the next "birth" of the soul on Earth thereafter.

- (7) URUWAN — The Soul. This comprises of 9 layers of lights of varying colours and speed — frequencies. The soul receives food and nourishment from the COLOURS of Light energies flowing through the 10th Chakra in the Kehrp (Aura), according to the divine law of "STAOT."
- (8) BAODHANG — The Wisdom of the Soul — the spiritual awareness or the knowledge of the Divine Universal Natural Laws which every soul carries with it through the total accumulation of its past experiences which it has learnt throughout its existence (not only from life on this planet Earth but throughout its existence in the Universe).
- (9) (Human Being's) — The spiritual connection or link of the Soul with Ahura Mazda.  
FRAVASHI

These three parts are immortal and continue to exist even after the Kehrp — Ushtan — Tevishi have perished|dissolved.

This is the basic frame-work for "Diagnosis of Diseases" of a human being on Earth. The Zarathushtrian Doctor when faced with a patient's medical complaint would first seek to analyse the 'location' or

'source' of the complaint — e.g. is it a merely purely 'physical' "disease" e.g. a fracture of a bone (TANU); or pertaining to the GAETHA — e.g. Muscle deterioration; or is it pertaining to the 'Aura' (i.e. AZDE and KEHRP where most diseases of the physical body can be traced) — e.g. 'organs' imbalances e.g. bile production, gastric juices etc; or is it pertaining to blockage of the Life-Force flowing through the USHTAN into and through the Aura and the physical body; or is it a 'psychological' disease originating in the TEVISHI — emotions? e.g. lack of love will affect flow of Red colour, through the Chakhra connected to the Liver and result in a physical disease of the Liver; or e.g. Schizophrenia — i.e. the channels conducting the energy from the innermost thoughts of the soul get twisted and a split or blockage arises as the "desires" Tevishi currents are contra to the correct free will (i.e. if the soul makes a "wrong" choice — knowing its action is disobedient to the Divine Will of the Almighty, the currents flowing from the Conscience located in the Lyhaan Chakhra connected to the Pineal Gland will get blocked; and the channels will become twisted so that the currents do not flow into and through the Tevishi. The Tevishi then does as it pleases — the emotions become un-governable and the person develops a "split" in the "personality" of the human being.) (SEE DIAGRAM II OF AIPL)

(14) In the Mazdayasnie Zarathushtrian Daena the "Way of Life" is given so that the Human being leads a life in accordance with the Divine Laws and in Harmony with Nature. Then the quality of Holiness (Ashoi) develops and a true "Halo" (Khoreh) is acquired in the Aura (Kehrp). Clairvoyants can see this "Halo" around the Head of a truly virtuous and holy person. (SEE DIAGRAM III OF COLOURS AND POSITIONS OF 7 MAEN CHAKHRAS)

(15) The 16 CHAKHRAS and the KEHRP.

In the Mazdayasnie Zarathushtrian Daena there is detailed knowledge revealed of the "Aura" i.e. the egg-shaped oval envelope or 'atmosphere' which surrounds a Human Being. The physical body is composed of "matter". There are four grades of density of matter — solid, liquid, gaseous and firey-vibratory. These four grades are subdivided into 8 "orders" on the scale of  $8 \times 4 = "32 \text{ orders}"$  of density of physical matter. E.g. coldest "ICE" may be "32" density — when warmed it passes into liquid density of "24 density" (at temperature of 33° Farenheit) when further warmed it may pass into "16 density" of steam at 212° Farenheit; and when further heated it may retain its character of a molecule of water as water-vapour of 8 — 1 density of firey — vibratory grade.

Similarly there are '32 orders' of 4 grades of "Invisible" matter — the ultra-refined quality of matter which exists in the atmosphere, or in the Aura. The "16 Chakhras" are composed of this invisible grade of matter. These Chakhras exist in the Kehrp (Aura) and are connected to certain keypoints in the physical body organs of the glands and the nerve-centres. Like a transistor-radio has tiny transistors which "pick up" and "receive" the vibratory frequencies which are in our surrounding air and then pass them into an amplifier so that our physical organ — ear — can 'hear' them, these Chakhras pick up the colours — vibrations which are passing through the Kehrp-Aura and transmit them to the physical body organs of the glands and nerve centres. Thus, the physical body is "fed" by and through the Chakhras and receives its quota of colours needed to keep it alive and in "ease" and harmony. DIAGRAM IV gives the positions of the 16 different Chakhras in the Aura. DIAGRAM V gives the positions of the 8 Chakhras connected to glands and nerve centres in the head. (fn. 16)

(16) How do these Chakhras function? Each Chakhra "receives" the vibrations of a certain frequency and the "colour" of a certain frequency. The "Light" frequencies emanating from the distant Constellations of Stars and the Planets of our Solar System pass through the atmosphere of the Earth planet, and pass into the "Aura" — Kehrp surrounding the physical body of a person. Each of the 16 Chakhras in the Kehrp is attuned to "pick up" only certain colour vibratory frequencies out of the numerous frequencies passing through the Kehrp. Each Chakhra performs its specific function of picking up its selected frequency and passing that particular colour frequency into the physical body organ with which it is connected. For example, the 10th Chakhra is connected to the Heart organ through a gland. It functions on the orange and magenta colour vibratory frequencies. It picks up the orange colour and the vibrations flowing from the stars of the Constellations of Leo from which the 'Sun' of our Solar system receives strong LIGHT vibrations, and passes all these vibrations of (a) the Light of the stars of Leo, (b) the Light of the Sun, and the (c) the Orange colour, to the gland which controls the heart organ. Nowadays medical doctors prescribe a medicine made out of a plant called Rauwolfia Serpentina for certain kinds of heart trouble. But they never stop to think or enquire WHY this particular plant is used (and not for example a plant with blue or purple flower). The true answer lies in the secret workings of the Chakhras. This plant predominates on the orange colour of LIGHT vibratory energies, it is thus sur-charged with the exact vibratory energy which the 10th Chakhra can pick up and pass to the heart organ through the Thymus gland. (see DIAGRAM III)



'source' of the complaint — e.g. is it a merely purely 'physical' "disease" e.g. a fracture of a bone (TANU); or pertaining to the GAETHA — e.g. Muscle deterioration; or is it pertaining to the 'Aura' (i.e. AZDE and KEHRP where most diseases of the physical body can be traced) — e.g. 'organs' imbalances e.g. bile production, gastric juices etc; or is it pertaining to blockage of the Life-Force flowing through the USHTAN into and through the Aura and the physical body; or is it a 'psychological' disease originating in the TEVISHI — emotions? e.g. lack of love will affect flow of Red colour, through the Chakhra connected to the Liver and result in a physical disease of the Liver; or e.g. Schizophrenia — i.e. the channels conducting the energy from the innermost thoughts of the soul get twisted and a split or blockage arises as the "desires" Tevishi currents are contra to the correct free will (i.e. if the soul makes a "wrong" choice — knowing its action is disobedient to the Divine Will of the Almighty, the currents flowing from the Conscience located in the Lyhaan Chakhra connected to the Pineal Gland will get blocked; and the channels will become twisted so that the currents do not flow into and through the Tevishi. The Tevishi then does as it pleases — the emotions become un-governable and the person develops a "split" in the "personality" of the human being.) (SEE DIAGRAM II OF AIPL.)

(14) In the Mazdayasnie Zarathushtrian Daena the "Way of Life" is given so that the Human being leads a life in accordance with the Divine Laws and in Harmony with Nature. Then the quality of Holiness (Ashoi) develops and a true "Halo" (Khoreh) is acquired in the Aura (Kehrp). Clairvoyants can see this "Halo" around the Head of a truly virtuous and holy person. (SEE DIAGRAM III OF COLOURS AND POSITIONS OF 7 MAIN CHAKHRAS)

**(15) The 16 CHAKHRAS and the KEHRP.**

In the Mazdayasnie Zarathushtrian Daena there is detailed knowledge revealed of the "Aura" i.e. the egg-shaped oval envelope or 'atmosphere' which surrounds a Human Being. The physical body is composed of "matter". There are four grades of density of matter — solid, liquid, gaseous and firey-vibratory. These four grades are subdivided into 8 "orders" on the scale of  $8 \times 4 = "32 \text{ orders}"$  of density of physical matter. E.g. coldest "ICE" may be "32" density — when warmed it passes into liquid density of "24 density" (at temperature of 33° Fahrenheit) when further warmed it may pass into "16 density" of steam at 212° Fahrenheit; and when further heated it may retain its character of a molecule of water as water-vapour of 8 — 1 density of firey — vibratory grade.

Similarly there are '32 orders' of 4 grades of "Invisible" matter — the ultra-refined quality of matter which exists in the atmosphere, or in the Aura. The "16 Chakhras" are composed of this invisible grade of matter. These Chakhras exist in the Kehrp (Aura) and are connected to certain keypoints in the physical body organs of the glands and the nerve-centres. Like a transistor-radio has tiny transistors which "pick up" and "receive" the vibratory frequencies which are in our surrounding air and then pass them into an amplifier so that our physical organ — ear — can 'hear' them, these Chakhras pick up the colours — vibrations which are passing through the Kehrp-Aura and transmit them to the physical body organs of the glands and nerve centres. Thus, the physical body is "fed" by and through the Chakhras and receives its quota of colours needed to keep it alive and in "ease" and harmony. DIAGRAM IV gives the positions of the 16 different Chakhras in the Aura. DIAGRAM V gives the positions of the 8 Chakhras connected to glands and nerve centres in the head. (fn. 16)

(16) How do these Chakhras function? Each Chakhra "receives" the vibrations of a certain frequency and the "colour" of a certain frequency. The "Light" frequencies emanating from the distant Constellations of Stars and the Planets of our Solar System pass through the atmosphere of the Earth planet, and pass into the "Aura" — Kehrp surrounding the physical body of a person. Each of the 16 Chakhras in the Kehrp is attuned to "pick up" only certain colour vibratory frequencies out of the numerous frequencies passing through the Kehrp. Each Chakhra performs its specific function of picking up its selected frequency and passing that particular colour frequency into the physical body organ with which it is connected. For example, the 10th Chakhra is connected to the Heart organ through a gland. It functions on the orange and magenta colour vibratory frequencies. It picks up the orange colour and the vibrations flowing from the stars of the Constellations of Leo from which the 'Sun' of our Solar system receives strong LIGHT vibrations, and passes all these vibrations of (a) the Light of the stars of Leo, (b) the Light of the Sun, and the (c) the Orange colour, to the gland which controls the heart organ. Nowadays medical doctors prescribe a medicine made out of a plant called Rauwolfia Serpentina for certain kinds of heart trouble. But they never stop to think or enquire WHY this particular plant is used (and not for example a plant with blue or purple flower). The true answer lies in the secret workings of the Chakhras. This plant predominates on the orange colour of LIGHT vibratory energies, it is thus sur-charged with the exact vibratory energy which the 10th Chakhra can pick up and pass to the heart organ through the Thymus gland. (see DIAGRAM III)