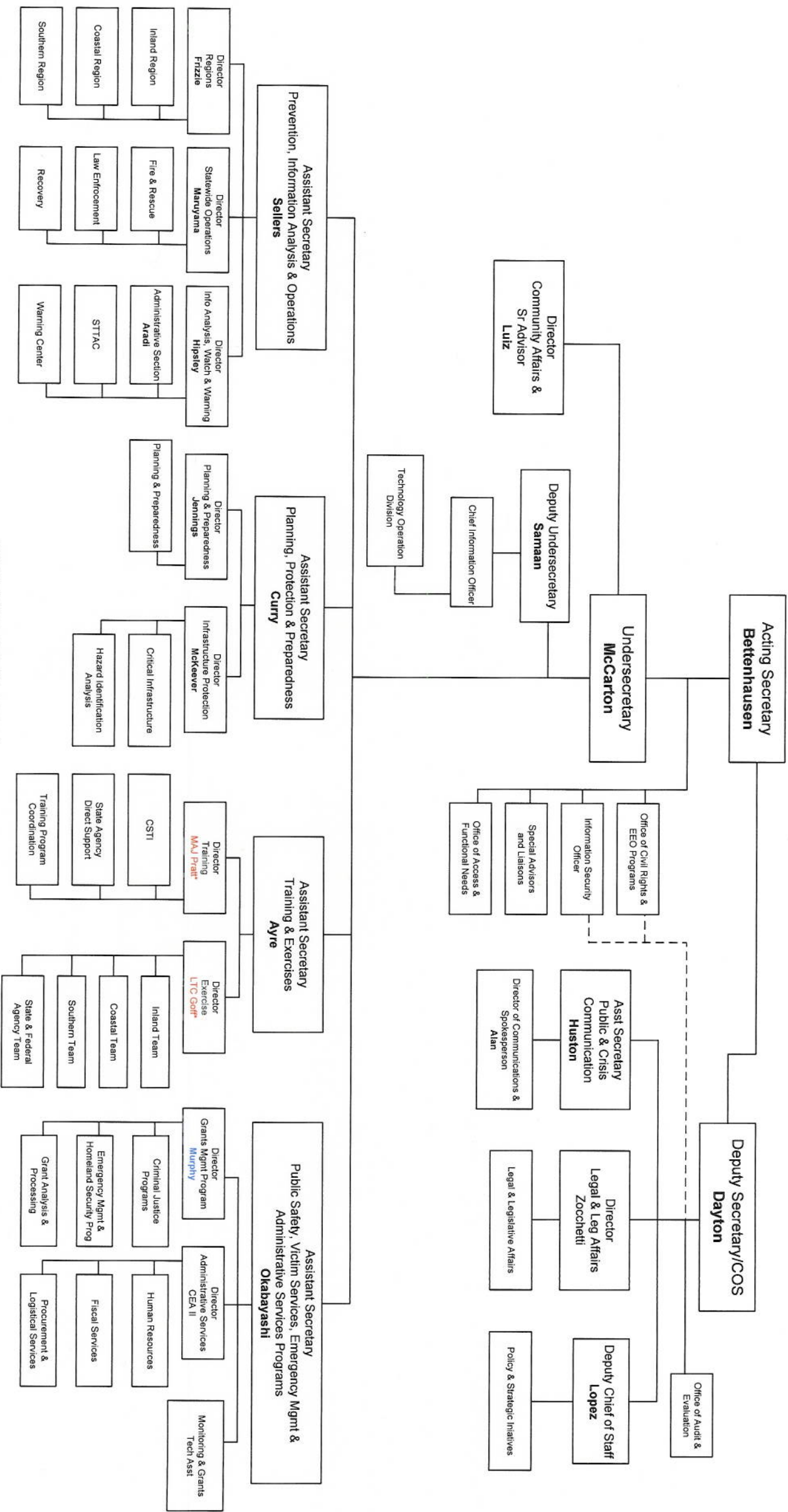
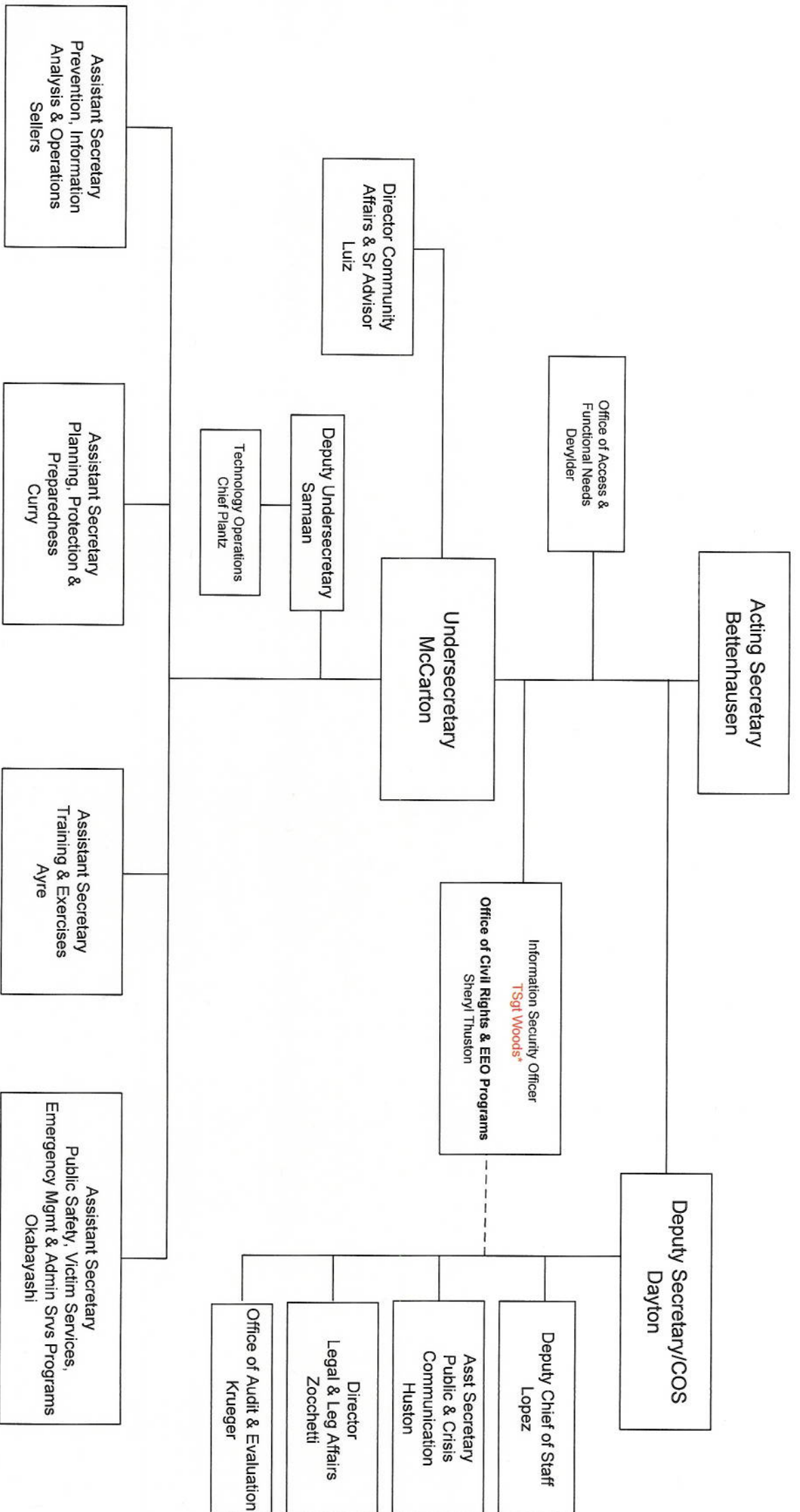


California Emergency Management Agency



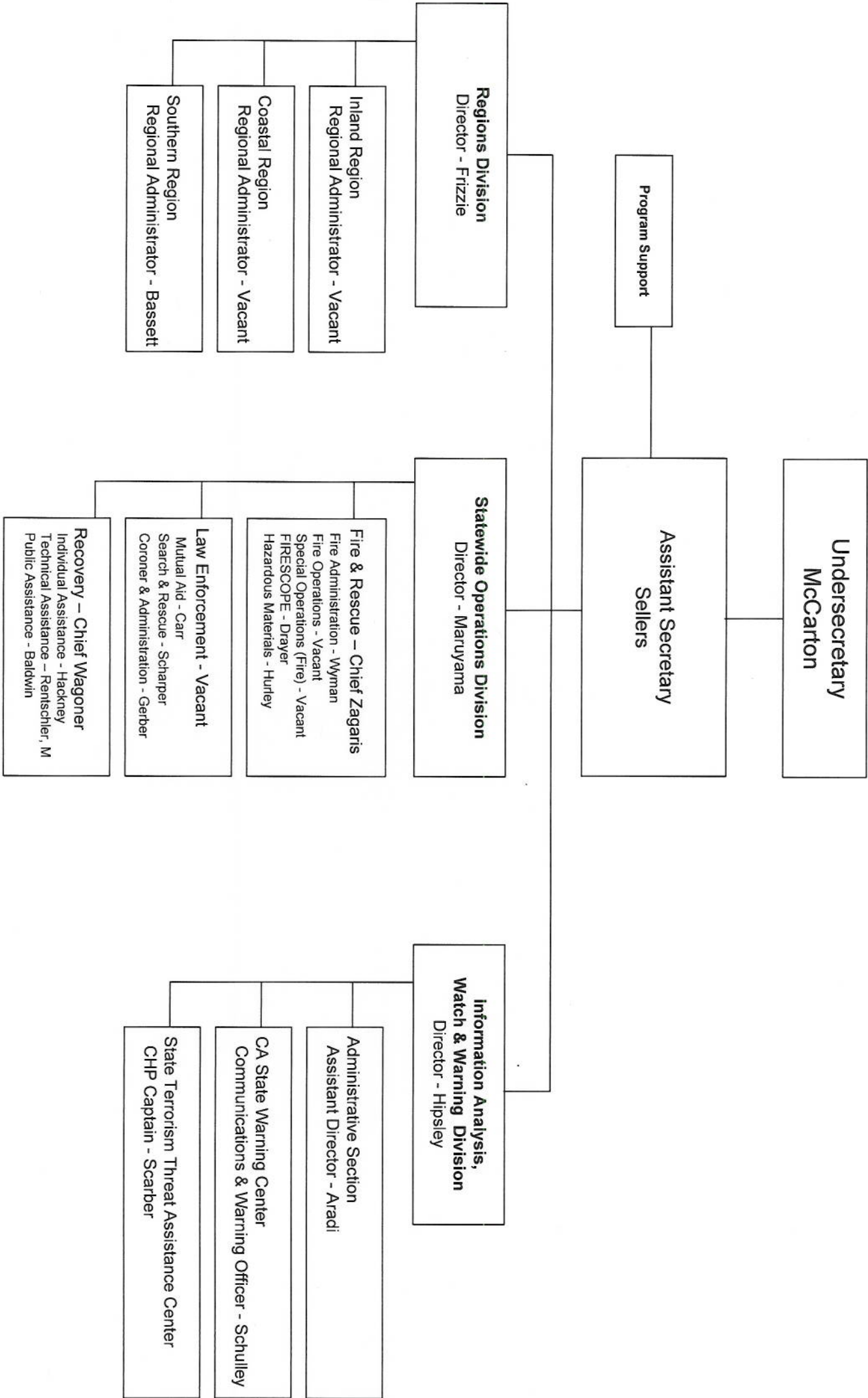
*State Active Duty Personnel
Exempt Appointments Noted in Bold Print

California Emergency Management Agency Executive

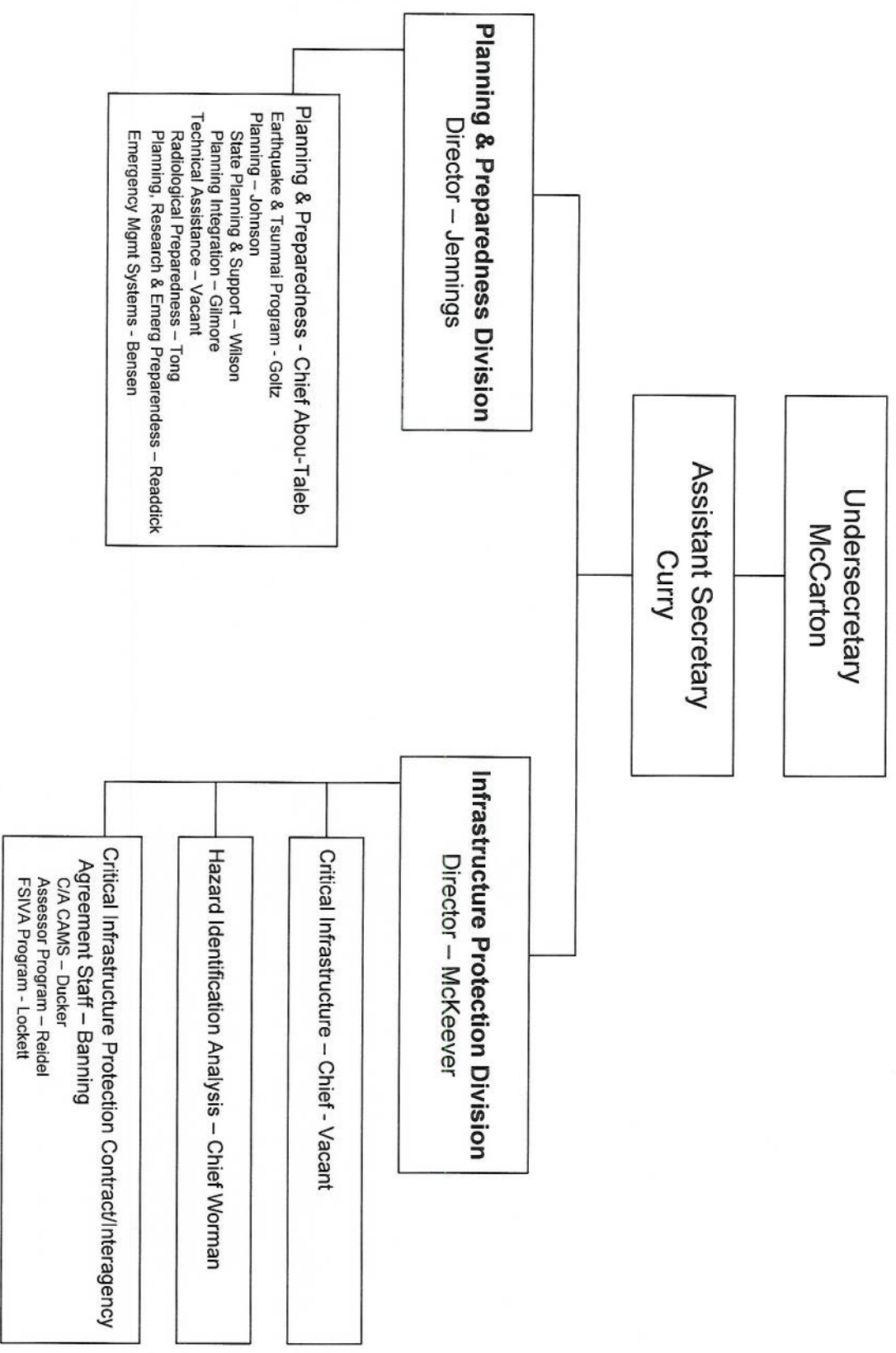


*State Active Duty Personnel

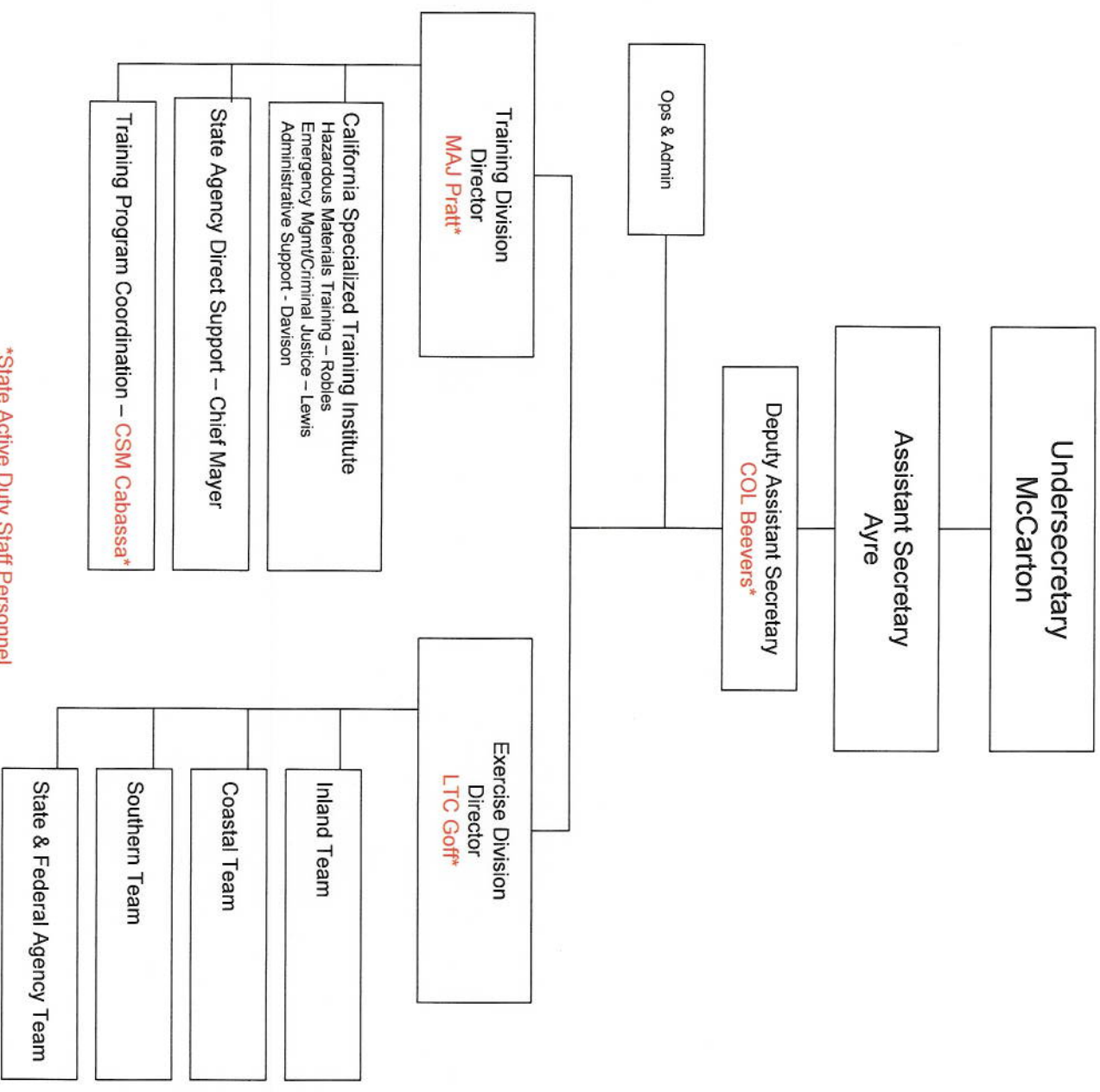
Prevention, Information Analysis and Operations



Planning, Protection & Preparedness



Training & Exercise



*State Active Duty Staff Personnel

Public Safety, Victim Services, Emergency Management & Administrative Services Programs

