

STEFANI, Giovanni

Donna Incostante – Aria Siciliana.

from

Affetti Amorosi canzonette ad vna voce sola.

Poste in musica da diuersi Autori con la parte del Basso, & le lettere dell'Alfabetto per la Chitara alla spagnola raccolte da Giovanni Stefani : con tre Arie Siciliano & due Vilanelle Spagnole.

Nouamente in questa terza impressione ristampate.

In Venetia: Appresso Alessandro Vincenti, 1621.

Transcribed by

Monica Hall

2011

This *alfabeto* song is from Giovanni Stefani's *Affetti Amorosi*. As can be seen in the facsimile, the guitar *alfabeto* appears to be at different pitch from the voice and bass part – it is in D minor rather than G minor. This has led to some speculation about the size of the guitar which should be used for the accompaniment. However the unusual clef combination or *chiavette* – C2 for the voice part and C4 for the bass - indicates that both voice part and bass part should be transposed down a perfect 4th to match the *alfabeto* not vice versa.

The standard clef configuration for *alfabeto* songs uses C1 for the voice part and F4 for the bass. However, different combinations of clefs were sometimes used to avoid using key signatures, especially ones with sharps, so that the singer could read their part according to the solmisation system. Another reason for using transposing clefs was to avoid the use of ledger lines which were difficult to print with moveable type.

Transposition was a normal everyday part of continuo playing and both keyboard players and theorboists would be able to transpose at sight. (They can today). In continuo parts in F3 or C4 clef there are sometimes instructions like '*sonata come stà*', indicating that the part is not to be transposed, because most continuo players would automatically transpose anything in those clefs. There are also continuo tutor books which teach transposition.

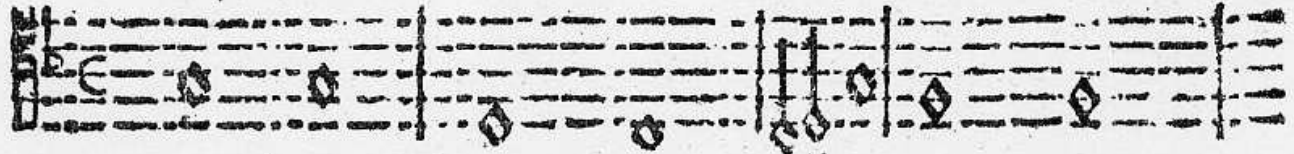
This is a transcription of the song at the correct pitch. Although the *alfabeto* fits reasonably well with the voice part, the bass part doesn't fit very well with either of them. But that's another story!

Jonna Inconstante.

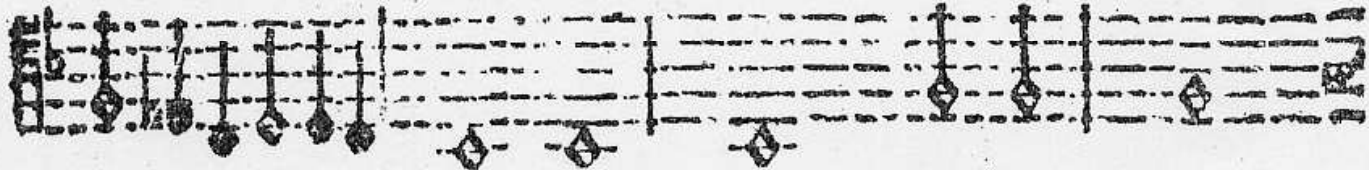
Aria Siciliana.



E I O I E B
Ngrata disleali ed inco stanti Quant'iu r'amu lu



H A I G L L
vidi apertamenti F fngi di p'auri chi di miscanti Quasi henon mi



K O I E B H A I H C I E
vidi ò nor ni senti Quasi che non mi vidi ò non mi senti.



F. Mancini Vcllo

Non torna nò lu tempu ch h'indauanti
Ne le bellezza dura eternamenti
Ogni machin' autissima importar ti
Sì disfa, si confuma, e torna uenti.

Giovanni Stefani - Donna incostante : Aria Siciliana.

In-gr-ta dis-lea - li ed in cos - - stan - ti Quant' - iu t'a-mu-lu

E I O I E B

Detailed description: This system contains the first three measures of the piece. The vocal line starts with a quarter rest, followed by a series of eighth and quarter notes. The piano accompaniment features a steady eighth-note bass line in the left hand and chords in the right hand. The key signature has one sharp (F#) and the time signature is 4/2.

5

vi-di a - per-ta-men - ti E fin - gi di l'au - ri chi di mir-can - ti Qua -

B H A I G L

Detailed description: This system contains measures 4 through 7. Measure 4 begins with a square box containing the number '5'. The vocal line continues with eighth and quarter notes. The piano accompaniment maintains the eighth-note bass line and provides harmonic support with chords. The key signature remains one sharp.

si che non mi vi - di o non mi sen - ti Qua-si che non mi

L E O I E B B H A

Detailed description: This system contains measures 8 through 11. The vocal line continues with eighth and quarter notes. The piano accompaniment features a consistent eighth-note bass line and chords. The key signature remains one sharp.

vi - dio non mi sen - ti

I H G I E

The image shows a musical score for three staves. The top staff is a vocal line in treble clef with a key signature of one sharp (F#) and a 4/4 time signature. The lyrics are "vi - dio non mi sen - ti". The middle staff is a guitar accompaniment in treble clef, featuring a capo on the first fret and a key signature of one sharp. It consists of six measures of chords corresponding to the lyrics: I, H, G, I, E. The bottom staff is a bass line in bass clef, providing a simple harmonic accompaniment for the vocal line.