

Example Polygon Selection Class Activity

North Santiam Watershed
Jefferson, Oregon

Together we will look at land
disturbances

- First, select a plot (polygon) in Google Earth

The year
is 1994



Note, these polygons were derived using the LandTrendr process (landtrendr.forestry.oregonstate.edu; Kennedy et al 2010)

- The plot is located in the southeast part of Jefferson. Look at historic images in Google Earth.



Note, these polygons were derived using the LandTrendr process (landtrendr.forestry.oregonstate.edu; Kennedy et al 2010)

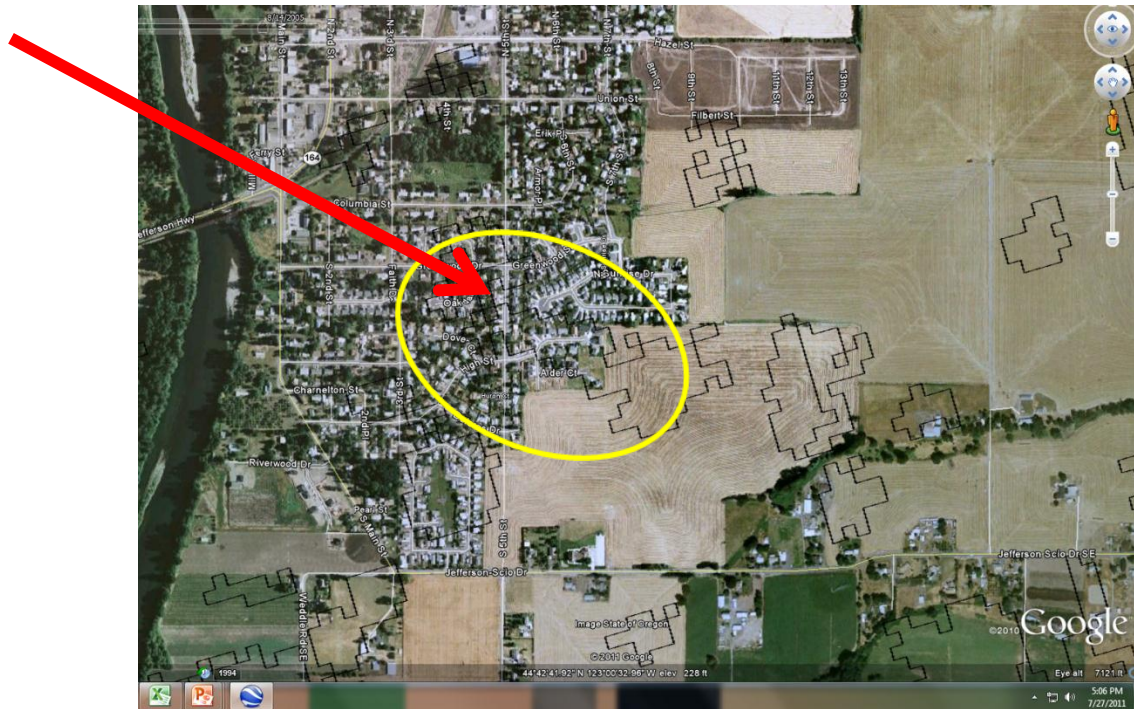
Through the historic record...

- What changes do you observe?

It is
2000

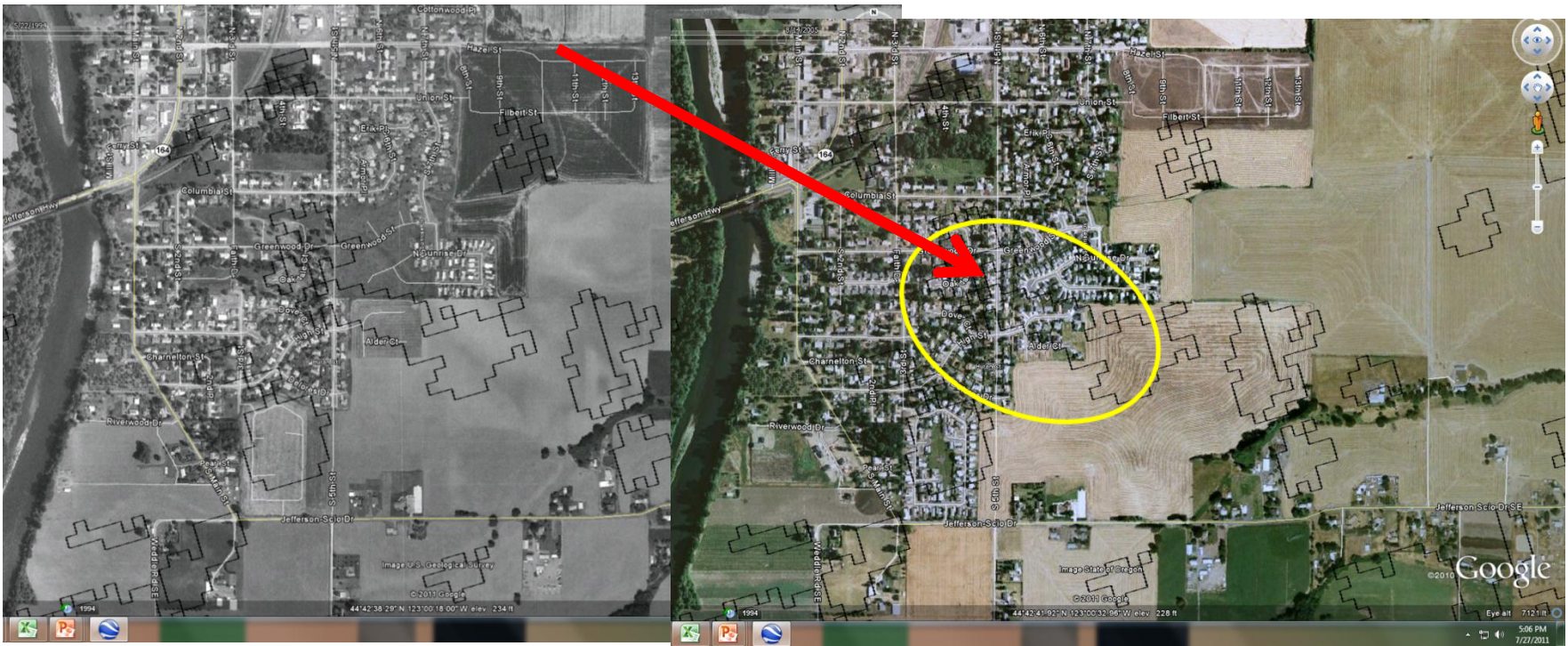


The same plot in 2006



Note, these polygons were derived using the LandTrendr process (landtrendr.forestry.oregonstate.edu; Kennedy et al 2010)

What are the changes you observed?



Note, these polygons were derived using the LandTrendr process (landtrendr.forestry.oregonstate.edu; Kennedy et al 2010)

Land disturbances happen all the time,
why do we care?

- Turn to your partner and brainstorm ideas, write down your ideas in your science journal.

Identify the land change

- Agriculture to Agriculture
- Forest to Agriculture
- Forest to Urban (houses)
- Agriculture to Urban
- Forest to Clearcut
- Other

Tell me the story...

- Together we used Satellite data to observe the landscape in a particular place.
- Scientists are doing this work all over our world.
- Now you will go the next step, by describing to someone who has never been to Jefferson, what happened.
- In your science journal, write the story of what happened to the land.